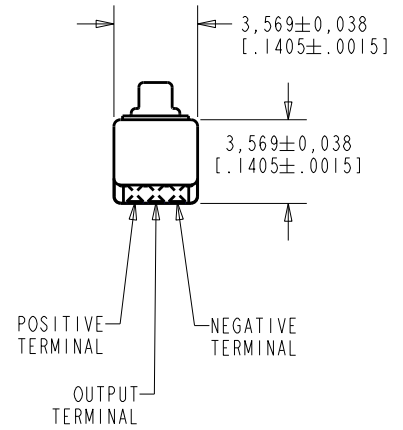
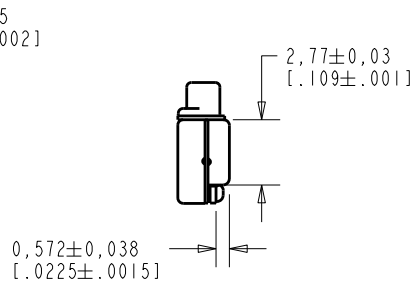
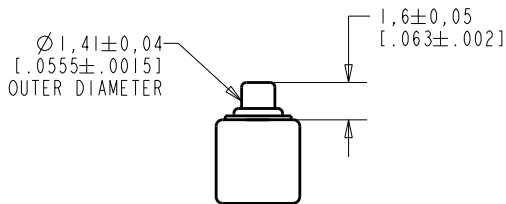
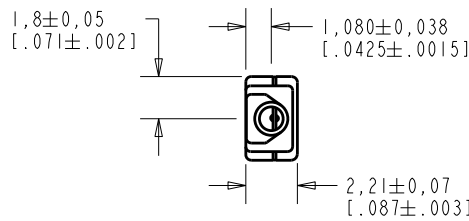


EM-25346-C37
SHT 1.1

NOTE:

- INCREASED PRESSURE AT SOUND INLET CAUSES A POSITIVE GOING VOLTAGE TO APPEAR AT THE OUTPUT TERMINAL, RELATIVE TO THE NEGATIVE TERMINAL.



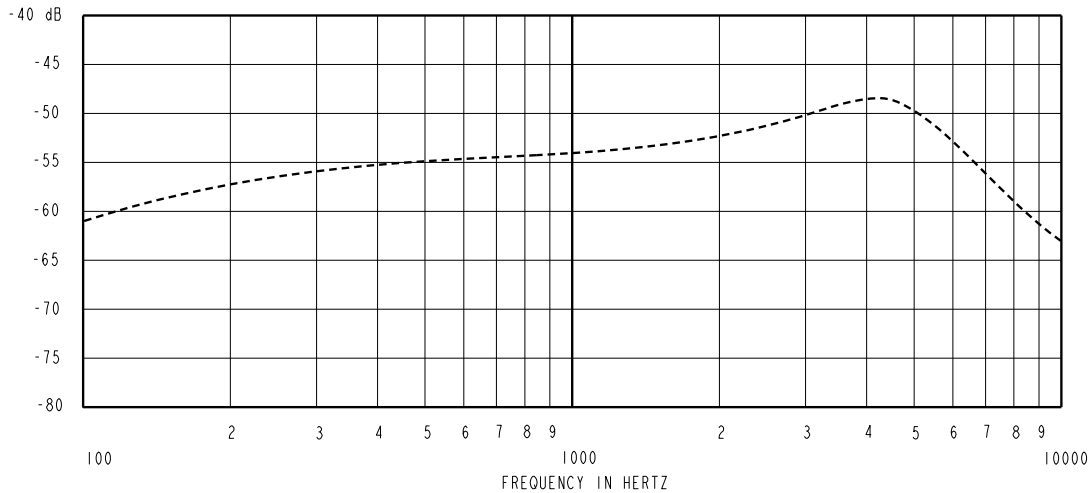
NOMINAL WEIGHT
 .08 GRAM

DIMENSIONS IN MILLIMETERS [INCHES]

Revision	C.O. #	Implementation Date	RELEASE LEVEL	REVISION
B	M10102035	7-7-08	Active	B
A	M10101354	1-30-07		
SCALE: 4:1			DR. BY	DATE
DO NOT SCALE DRAWING			LSY	1-30-07
			CK. BY	DATE
TITLE: MICROPHONE		EM-25346-C37	GJP	2-13-07
OUTLINE DRAWING		SHT 1.1	APP. BY	DATE
			GJP	2-13-07

KNOWLES ELECTRONICS
 ITASCA, ILLINOIS U.S.A.

SENSITIVITY IN dB RELATIVE TO 1.0 VOLT/0.1 Pa (N/M²)
FOR CONDITIONS SHOWN BELOW.

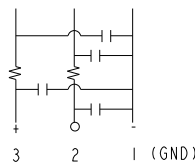


FREQUENCY	SENSITIVITY			DEVICE CONFORMITY	
	MIN.	NOM.	MAX.	RANGE OF DEVIATION FROM 1KHz	
100	---	-61.0	---	-10.0	-4.0
1000	-57.0	-54.0	-51.0	0.0	0.0
3500-5500	---	-48.5	---	+2.5	+8.5
6000	-57.5	-53.5	-49.5	---	---

- NOTES:
- CASE CONNECT TO NEGATIVE TERMINAL.
 - MICROPHONE TO BE FUNCTIONAL WITH 1.6 VDC SUPPLY.
 - TYPICAL SENSITIVITY TO HUMIDITY AT 1000Hz IS 0.03 dB/%RH
 - SENSITIVITY AND NOISE VALUES INDICATED ON THIS SPECIFICATION ARE VALID AT 50% HUMIDITY.
 - CAPACITANCE MEASUREMENT MADE WITH BOONTON MODEL 7200 OR EQUIVALENT WITH APPLIED AC VOLTAGE OF 15 mVOLTS AT 1 MHz AND 0 VDC. INCLUDES CIRCUIT CAPACITANCE IN PARALLEL WITH CAPACITOR.

PORT LOCATION	DC SUPPLY	AMPLIFIER CURRENT DRAIN	SENSITIVITY CHANGE ON REDUCING SUPPLY TO 0.9 VDC	"A" WEIGHTED NOISE (1 KHz EQUIVALENT SPL)	OUTPUT IMPEDANCE OHMS			CAPACITANCE ± 50%	
					MIN.	NOM.	MAX.	1-2	1-3
12S	1.3V	50µA MAX.	3 dB MAX.	28.0 dB MAX.	2800	4400	6800	30pF	30pF

CAPACITANCE PROBE POINTS



Revision	C.O. #	Implementation Date	RELEASE LEVEL	REVISION
B	M10102035	7-7-08	Active	B
A	M10101354	1-30-07		

KNOWLES ELECTRONICS
ITASCA, ILLINOIS U.S.A.

WHEN TEST LIMITS ARE USED TO ESTABLISH INCOMING INSPECTION ACCEPTANCE/REJECTION CRITERIA, CORRELATION OF TEST EQUIPMENT WITH KNOWLES IS ALSO REQUIRED FOR ELIMINATION OF EQUIPMENT AND TEST METHOD VARIATION

TITLE: **MICROPHONE** **EM-25346-C37**
PERFORMANCE SPECIFICATION **SHT 2.1**

DR. BY	DATE
LSY	1-30-07
CK. BY	DATE
GJP	2-13-07
APP. BY	DATE
GJP	2-13-07