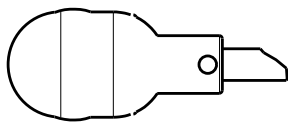


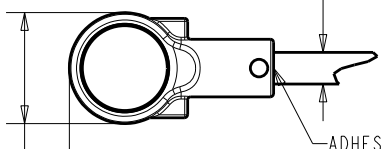
FB-EM-30342-000  
SHT 1.1



TOP VIEW  
W/WINDSHIELD SHOWN  
SCALE 1:1

$\varnothing 19,0 \pm 0,3$   
[.748 ± .012]

$\varnothing 5,41 \begin{smallmatrix} 0 \\ -0,20 \end{smallmatrix}$   
[.213  $\begin{smallmatrix} +.000 \\ -.008 \end{smallmatrix}$ ]

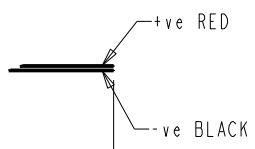


ADHESIVE BUILD UP  
TO BE 2mm MAX.

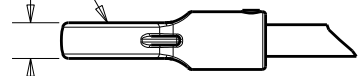
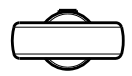
$190 \pm 10$   
[7.48 ± .39]



$60 \pm 5$   
[2.36 ± .20]



PLASTIC HOUSING, BLACK



$6,10 \pm 0,12$   
[.240 ± .005]

BLACK POLYURETHANE SHRINK COVER  
ON FLEXI-SET BOOM



WIRES  
2mm STRIPPED & TINNED ENDS

WIRE COLOR		WEIGHT GRAMS
+ve	OUTPUT	
RED	---	---

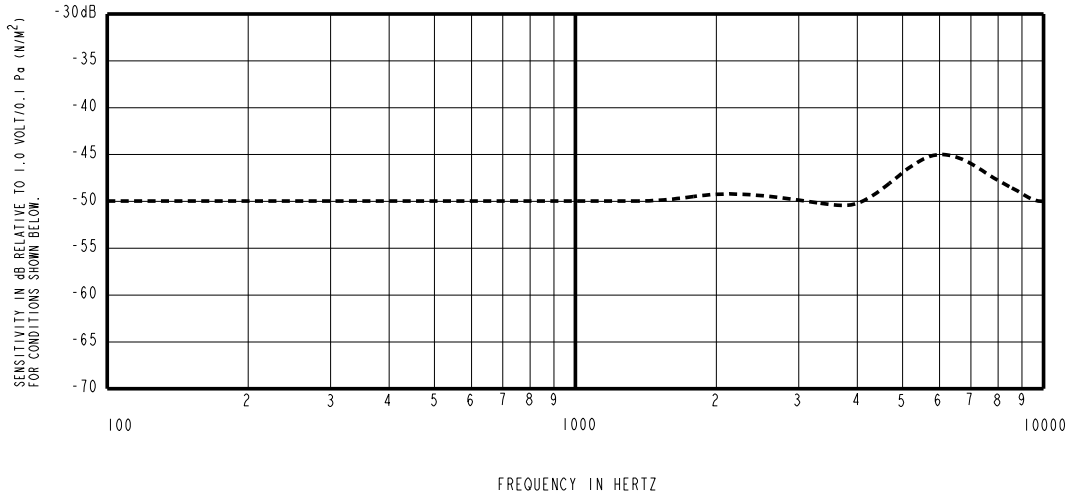
DIMENSIONS IN MILLIMETERS [INCHES]

Revision	C.O. #	Implementation Date	RELEASE LEVEL	REVISION
B	C10107747	8-9-08	Active	B
A	C10107368	5-27-08		

**KNOWLES ELECTRONICS**  
ITASCA, ILLINOIS U.S.A.

SCALE:	1:1	DR. BY	DATE
DO NOT SCALE DRAWING		TT	5-27-08
TITLE:	BOOM MICROPHONE	CK. BY	DATE
	FB-EM-30342-000	GJP	6-4-08
	OUTLINE DRAWING	APP. BY	DATE
	SHT 1.1	GJP	6-4-08

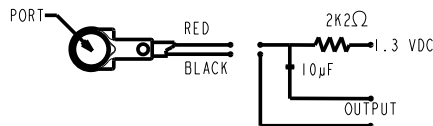
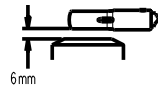
HE111ASIZE.FRM Rev: B



FREQUENCY	SENSITIVITY			DEVICE CONFORMITY	
	MIN.	NOM.	MAX.	RANGE OF DEVIATION FROM 1KHz	
300	---	-50.0	---	-4.0	+4.0
1000	-54.0	-50.0	-46	0.0	0.0
2000	---	-49.5	---	-4.0	---
6000	---	-45.5	---	0.0	+9

**NOTES:**

- MICROPHONE TO BE FUNCTIONAL WITH 10 VDC SUPPLY.
- SENSITIVITY VALUES INDICATED ON THIS SPECIFICATION ARE VALID AT 50% HUMIDITY.
- TEST CONDITIONS:  
HEAD OF BOOM EXPOSED TO 74 dB SPL SWEPT SOUND FIELD AT 6mm FROM VOICE APERTURE, ARTIFICIAL VOICE:  
B & k 4227 MOUTH SIMULATOR.
- FOR MICROPHONE CAPSULE SPEC. SEE DRAWING NR-25994-D63 SHEET 2.1.
- SURVIVES SUBMERSION IN 1m OF WATER FOR 5 MINUTES; SENSITIVITY WITHIN 3dB OF INITIAL SENSITIVITY AFTER DRIED FOR 30 MINUTES AT ROOM TEMPERATURE.



LEAD IDENTIFICATION & TEST CIRCUIT

Revision	C.O. #	Implementation Date	RELEASE LEVEL	REVISION
B	C10107747	8-9-08	<b>Active</b>	<b>B</b>
A	C10107368	5-27-08		

**KNOWLES ELECTRONICS**  
ITASCA, ILLINOIS U.S.A.

WHEN TEST LIMITS ARE USED TO ESTABLISH INCOMING INSPECTION ACCEPTANCE/REJECTION CRITERIA, CORRELATION OF TEST EQUIPMENT WITH KNOWLES IS ALSO REQUIRED FOR ELIMINATION OF EQUIPMENT AND TEST METHOD VARIATION		DR. BY	DATE
TITLE: <b>BOOM MICROPHONE FB-EM-30342-000</b>		TT	5-27-08
PERFORMANCE SPECIFICATION		CK. BY	DATE
<b>SHT 2.1</b>		GJP	6-4-08
		APP. BY	DATE
		GJP	6-4-08