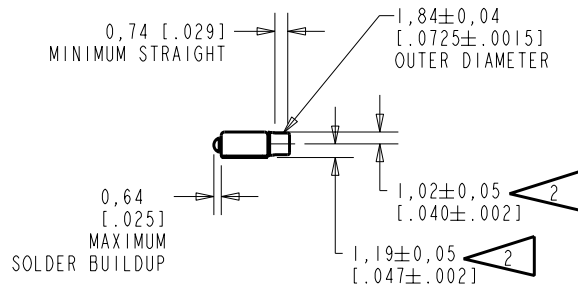
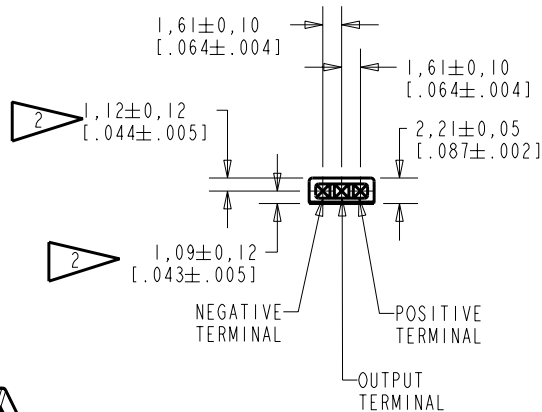
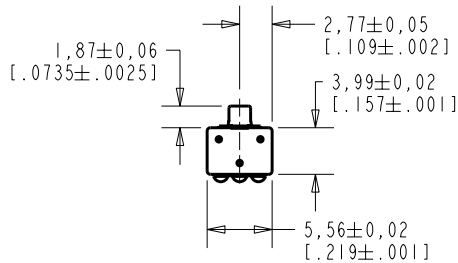


EK-23133-005
SHT 1.1

NOTE

1. INCREASED PRESSURE AT THE SOUND INLET CAUSES A POSITIVE GOING VOLTAGE TO APPEAR AT THE OUTPUT TERMINAL, RELATIVE TO THE NEGATIVE TERMINAL.

2 LOCATED FROM TWO SURFACES FOR CUSTOMER CONVENIENCE. ONLY APPLICABLE FROM ONE SURFACE, NOT TO BE USED TOGETHER. HORIZONTAL LOCATION FOR TERMINAL CENTERED TO $\pm 0,17$ [.007].



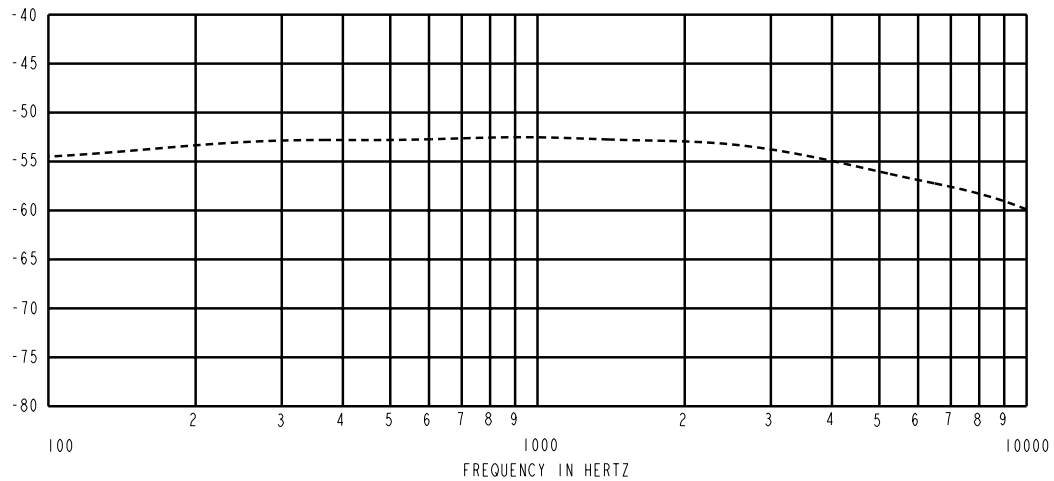
NOMINAL WEIGHT .13 GRAM DIMENSIONS IN MILLIMETERS [INCHES]

KNOWLES ELECTRONICS
ITASCA, ILLINOIS U.S.A.

| Revision | C.O. # | Implementation Date | RELEASE LEVEL | REVISION |
|----------------------|-----------|---------------------|---------------|----------|
| | | | Released | A |
| A | MI0101058 | 3-22-06 | | |
| SCALE: 2:1 | | | DR. BY | DATE |
| DO NOT SCALE DRAWING | | | MMM | 3-22-06 |
| TITLE: MICROPHONE | | EK-23133-005 | CK. BY | DATE |
| OUTLINE DRAWING | | SHT 1.1 | CRG | 3-31-06 |
| | | | APP. BY | DATE |
| | | | AB | 3-31-06 |

KE111ASTZE.FRM Rev: B

SENSITIVITY IN dB RELATIVE TO 1.0 VOLT/0.1 Pa (N/M²) FOR CONDITIONS SHOWN BELOW.



| FREQUENCY | SENSITIVITY | | | DEVICE CONFORMITY | |
|-----------|-------------|-------|-------|------------------------------|------|
| | MIN. | NOM. | MAX. | RANGE OF DEVIATION FROM 1kHz | |
| 100 | --- | -54.5 | --- | -5.0 | 0.0 |
| 1000 | -55.0 | -53.0 | -51.0 | 0.0 | 0.0 |
| 8000 | --- | -58.5 | --- | -8.5 | -2.5 |

NOTES:

- CASE CONNECTED TO NEGATIVE TERMINAL.
- MICROPHONE TO BE FUNCTIONAL WITH 10 VDC SUPPLY.
- CONFORMS TO REQUIREMENTS SHOWN ON 'ELECTRET MICROPHONE ENVIRONMENTAL QUALIFICATIONS TEST, EK-PA SHEET 2.2' WITH REF. FREQ. OF 1000 Hz.
- TYPICAL SENSITIVITY TO HUMIDITY AT 1000 Hz IS 0.02 dB/%RH.
- SENSITIVITY AND NOISE VALUES INDICATED ON THIS SPECIFICATION ARE VALID AT 50% HUMIDITY.

| PORT LOCATION | DC SUPPLY | AMPLIFIER CURRENT DRAIN | SENSITIVITY CHANGE ON REDUCING SUPPLY TO 0.9VDC | "A" WEIGHTED NOISE (1 kHz EQUIV. SPL) | OUTPUT IMPEDANCE OHMS | | | CAPACITANCE ±50% | |
|---------------|-----------|-------------------------|---|---------------------------------------|-----------------------|------|------|------------------|-----|
| | | | | | MIN. | NOM. | MAX. | 1-2 | 1-3 |
| 12S | 1.3V | 50 µA MAX. | 3 dB MAX. | 26.0 dB MAX. | 2800 | 4400 | 6800 | N/A | N/A |

| Revision | C.O. # | Implementation Date | RELEASE LEVEL | REVISION |
|----------|-----------|---------------------|---------------|----------|
| A | M10101058 | 3-22-06 | Released | A |

| | | | |
|--|--|---------|---------|
| WHEN TEST LIMITS ARE USED TO ESTABLISH INCOMING INSPECTION ACCEPTANCE/REJECTION CRITERIA, CORRELATION OF TEST EQUIPMENT WITH KNOWLES IS ALSO REQUIRED FOR ELIMINATION OF EQUIPMENT AND TEST METHOD VARIATION | | DR. BY | DATE |
| | | MM | 3-22-06 |
| TITLE: MICROPHONE | | CK. BY | DATE |
| | | CRG | 3-31-06 |
| PERFORMANCE SPECIFICATION | | APP. BY | DATE |
| EK-23133-005 | | AB | 3-31-06 |
| SHT 2.1 | | | |

KNOWLES ELECTRONICS
 ITASCA, ILLINOIS U.S.A.