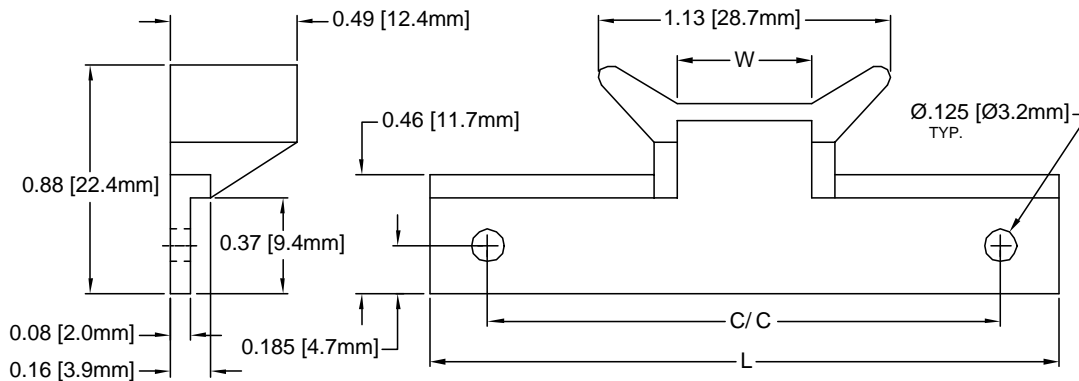


REV.	DESCRIPTION	DATE	APPROVED
A	Engineering Update w/o Changes	02/24/04	M. C.
B	Corrected P/Ns	09/05/06	M. C.



PART NO.	BIVAR MT'L CODE	L	W	C/C
CP-1 NT	03-NL (#2, Natural)	1.30"(33.0mm)	.55"(14.0mm)	1.00"(25.4mm)
CP-1 BK	03-NL-BK (#3, Black)			
CP-1 WE	04-WE (#4, White)			
CP-2 NT	03-NL (#2, Natural)	2.43"(61.7mm)	.52"(13.2mm)	1.98"(50.3mm)
CP-2 BK	03-NL-BK (#3, Black)			
CP-2 WE	04-WE (#4, White)			

4. MATERIAL: NYLON 6/6, 94V-2, WHITE. BIVAR MATERIAL CODE 04-WE.
BASF ULTRAMID NYLON 6/6 A3K WHITE.
3. MATERIAL: NYLON 6/6, 94V-2, BLACK. BIVAR MATERIAL CODE 03-NL-BK.
BASF ULTRAMID NYLON 6/6 A3K NATURAL W/BLACK PIGMENT ADDED.
2. MATERIAL: NYLON 6/6, 94V-2, NATURAL. BIVAR MATERIAL CODE 03-NL.
BASF ULTRAMID NYLON 6/6 A3K NATURAL.
1. GENERAL SPECIFICATIONS: BIVAR MOLDED COMPONENT SPECIFICATION BV00-E101.

STANDARD TOLERANCE (UNLESS OTHERWISE SPECIFIED)		BIVAR®	
DECIMALS ANGULAR .X ± .1 X° ± 1° .XX ± .01 .XXX ± .005		4 THOMAS, IRVINE, CA. 92618 TEL: (949) 951-8808 FAX: (949) 951-3974	
DESIGNED: Shane Irving	DATE: 01/01/00	TITLE: CIRCUIT BOARD CARD EJECTOR	REVISION: B
CHECKED: D. Green	DATE: 02/24/04	PART NO: CP-1&2	SHEET # 1 OF 1
CAGE CODE : 32559			
CAD GENERATED DOCUMENT. DO NOT MEASURE DRAWING.			