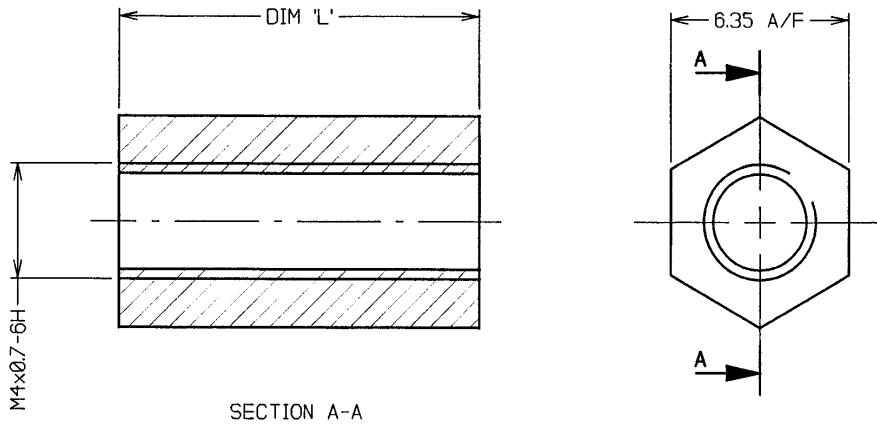


Customer Information Sheet

DRAWING No.: R4491-02 - R4497-02 SHEET 2 OF 2 IF IN DOUBT - ASK © NOT TO SCALE THIRD ANGLE PROJECTION ALL DIMENSIONS IN mm



SECTION A-A

NOTES:

1. THREAD TO BE MANUFACTURED IN ACCORDANCE WITH BS 3643 PT2 1981.
2. 0.25 CHAMFER FOR LEAD IN ON THREAD. REMOVE ALL BURRS.
3. FINISH = 0.35µ NICKEL.

PART NO	DIM 'L' (mm)	DIM 'L' (Inches)
R4491-02	6.35	.250
R4492-02	9.52	.375
R4493-02	12.70	.500
R4494-02	15.88 ±0.15	.625
R4495-02	19.05 ±0.15	.750
R4496-02	22.22 ±0.15	.875
R4497-02	25.40 ±0.15	1.000

14	01.09.99	4995
ISS:	DATE	REV/NOTE
APPROVED: <i>[Signature]</i>		
CHECKED: <i>[Signature]</i>		
DRAWN: J KEIR		
CUSTOMER REF.:		
ASSEMBLY DRG:		



HARWIN INC
U.S.A.
TEL: (812) 285 0055
FAX: (812) 285 0056

HARWIN PLC
U.K.
TEL: 01705 370451
FAX: 01705 314590

HARWIN PTE
SINGAPORE
TEL: 65 7794909
FAX: 65 7793868

THIS DRAWING AND ANY INFORMATION OR DESCRIPTIVE MATTER SET OUT HEREON ARE CONFIDENTIAL AND COPYRIGHT PROPERTY OF THE HARWIN GROUP AND MUST NOT BE DISCLOSED, LOANED, COPIED OR USED FOR MANUFACTURING, TENDERING OR FOR ANY OTHER PURPOSE WITHOUT THEIR WRITTEN PERMISSION

TOLERANCES
X. - ±1mm
X.X - ±0.25mm
X.XX - ±0.10mm
X.XXX - ±0.01mm
ANGLES - ±1°
UNLESS STATED

MATERIAL: BRASS CZ121 TO BS2874
FINISH: SEE NOTE 3
S/AREA: mm²

TITLE: M4 HEXAGONAL THREADED SPACER (IMPERIAL LENGTH)

DRAWING NUMBER: R4491-02 - R4497-02

SHT 2 OF 2