

DRAWING NUMBER

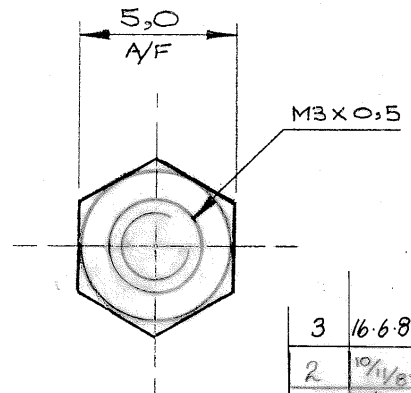
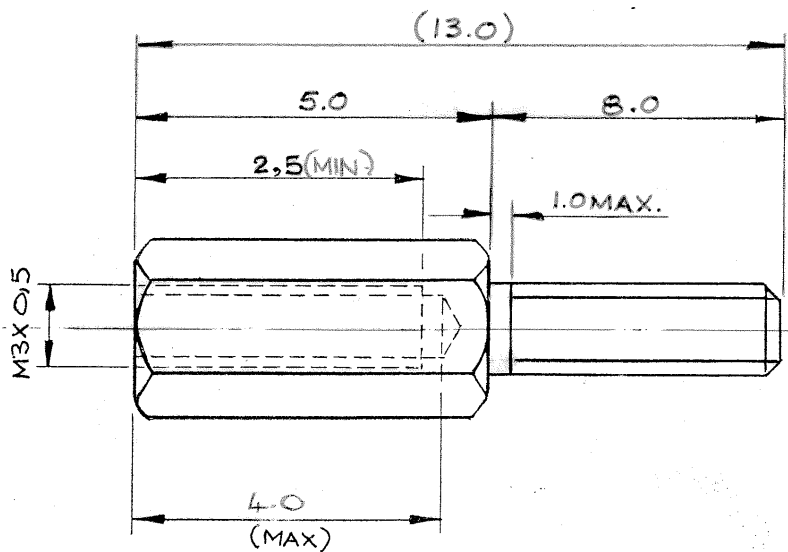
THIRD ANGLE PROJECTION

DO NOT SCALE

MACH. No.

R6340-02

CAM No.



3	16-6-89	14-63
2	10/1/87	1182
1	2/3/86	-
ISS.	DATE	CHANGE
APPD.	<i>Bl</i>	
CHKD.	<i>J.C</i>	
DRAWN K.S		
CUSTOMER REF.		
COMPUTER No. WAS R103242C		
ASSY. DRAWING		

NOTE:- 0.25 CHAMFERS FOR LEAD IN ON THREAD.  
 REMOVE ALL BURRS.  
 THREADS TO BE MANUFACTURED IN  
 ACCORDANCE WITH BS3643 PT2 1966.

HARWIN ENGINEERS S.A.

FITZHERBERT RD., FARLINGTON,  
 PORTSMOUTH, PO6 1RT

MATERIAL BRASS TO  
 BS2874 CZ121

TITLE INT./EXT.  
 THREADED SPACER.

TOLERANCES

X. ± 1mm  
 X.X ± 0.25mm  
 X.XX ± 0.1mm  
 X.XXX ± 0.01mm

FINISH F0203 (NICKEL PLATE)

S/AREA mm<sup>2</sup>

DIM'S. IN MM

SCALE N.T.S

DRAWING NUMBER

R6340-02

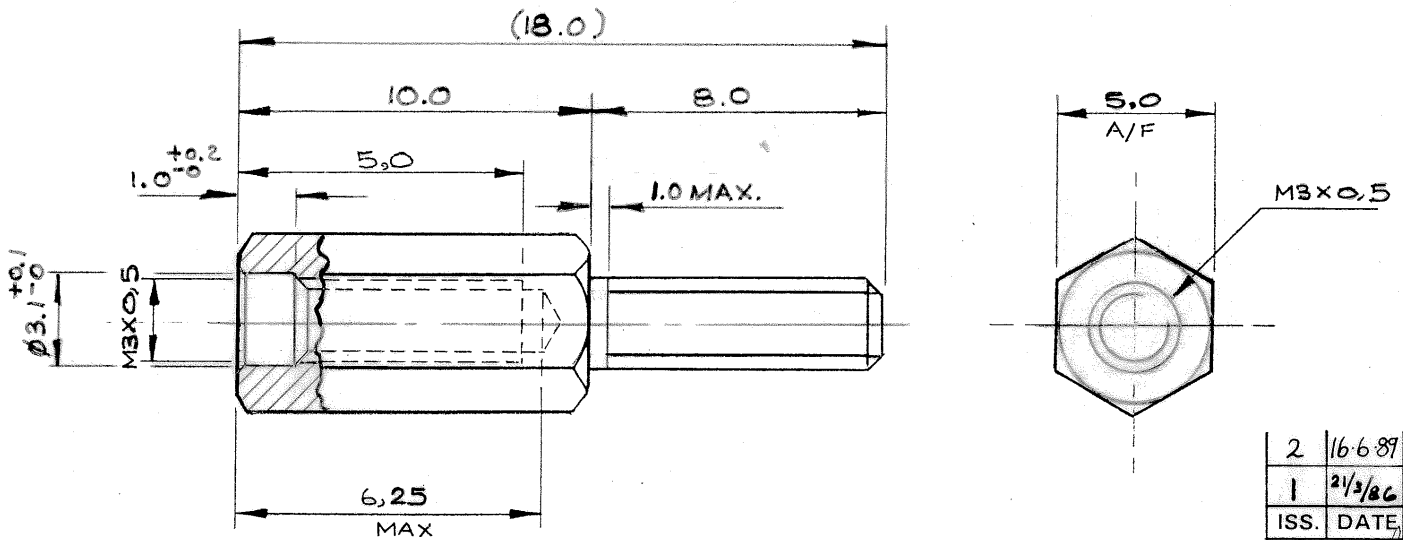
DRAWING NUMBER  
**R6341-02**

THIRD ANGLE PROJECTION

DO NOT SCALE

MACH. No.

CAM No.



NOTE: 0.25 CHAMFERS MAX. FOR LEAD IN ON THREADS.  
REMOVE ALL BURRS.  
THREADS TO BE MANUFACTURED IN ACCORDANCE  
WITH BS3643 PT.2 1966

2	16/6/89	1463
1	21/2/86	-
ISS.	DATE	CHANGE
APPD.	<i>[Signature]</i>	
CHKD.	J.C	
DRAWN	K.S	
CUSTOMER REF.		
COMPUTER No.	WAS R103243C	
ASSY. DRAWING		
DRAWING NUMBER	<b>R6341-02</b>	

**HARWIN ENGINEERS S.A.**  
FITZHERBERT RD., FARLINGTON,  
PORTSMOUTH, PO6 1RT

MATERIAL BRASS TO  
BS2874 CZ121

TITLE INT./EXT.  
THREADED SPACER.

TOLERANCES  
X. ± 1mm  
X.X ± 0.25mm  
X.XX ± 0.1mm  
X.XXX ± 0.01mm

FINISH F0203 (NICKEL PLATE)  
S/AREA mm<sup>2</sup>  
DIM'S. IN MM  
SCALE N.T.S

DRAWING NUMBER

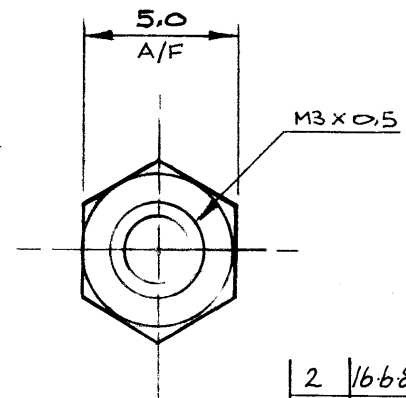
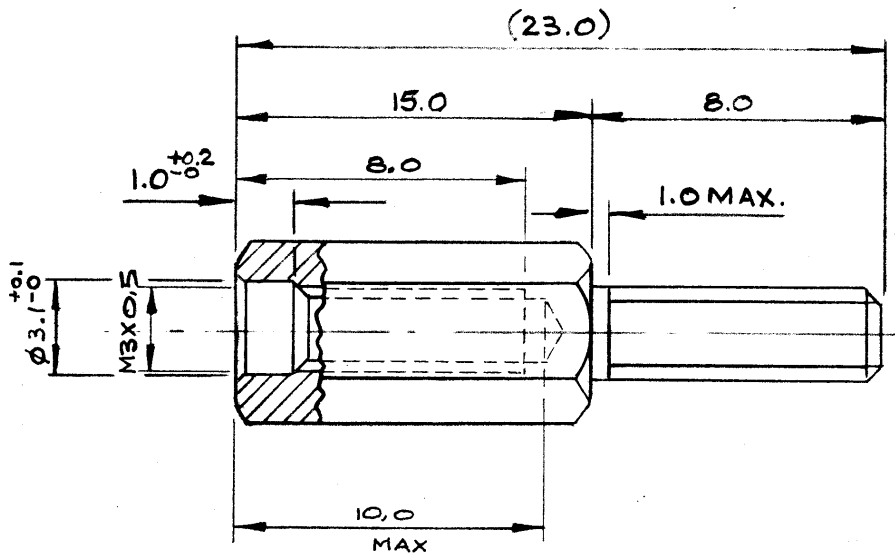
R6342-02

THIRD ANGLE PROJECTION

DO NOT SCALE

MACH. No.

CAM No.



NOTE: 0.25 CHAMFERS MAX. FOR LEAD IN ON THREADS.  
 REMOVE ALL BURRS.  
 THREADS TO BE MANUFACTURED IN ACCORDANCE  
 WITH BS3643 PT.2 1966

2	16/6/87	1463
1	21/3/86	-
ISS.	DATE	CHANGE
APPD.	<i>[Signature]</i>	
CHKD.	J.C.	
DRAWN	K.S.	
CUSTOMER REF.		
COMPUTER No.	WAS R103244C	
ASSY. DRAWING		

HARWIN ENGINEERS S.A.

FITZHERBERT RD., FARLINGTON,

PORTSMOUTH, PO6 1RT

MATERIAL BRASS TO  
BS2874 CZ121TITLE INT./EXT.  
THREADED SPACER.

TOLERANCES

X.	± 1mm
X.X	± 0.25mm
X.XX	± 0.1mm
X.XXX	± 0.01mm

FINISH F0203 (NICKEL PLATE)

S/AREA mm<sup>2</sup>

DIM'S. IN MM

SCALE N.T.S.

DRAWING NUMBER

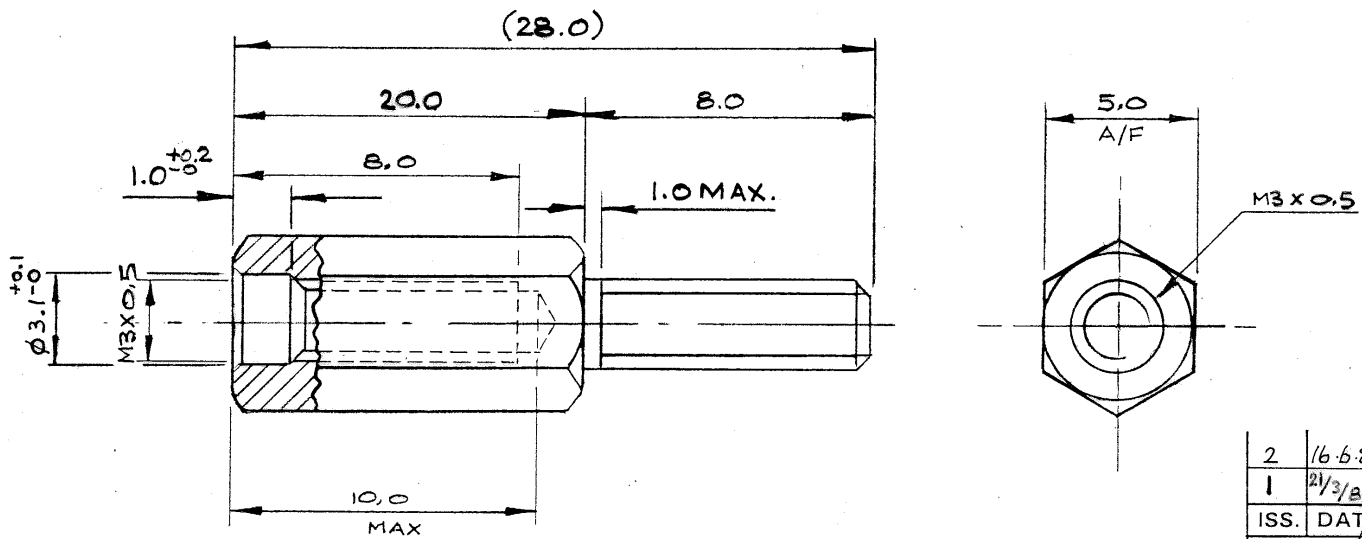
R6342-02

DRAWING NUMBER  
**R6343-02**

THIRD ANGLE PROJECTION

DO NOT SCALE

MACH. No.	
CAM No.	



**NOTE: 0.25 CHAMFERS MAX. FOR LEAD IN ON THREADS.  
REMOVE ALL BURRS.  
THREADS TO BE MANUFACTURED IN ACCORDANCE  
WITH BS3643 PT.2 1966**

2	16.6.81	1463
1	21/3/86	-
ISS.	DATE	CHANGE
APPD.	<i>[Signature]</i>	
CHKD.	J.C.	
DRAWN K.S		
CUSTOMER REF.		
COMPUTER No.		
ASSY. DRAWING		

<b>HARWIN ENGINEERS S.A.</b> FITZHERBERT RD., FARLINGTON, PORTSMOUTH, PO6 1RT	MATERIAL BRASS TO BS2874 CZ121	<b>TOLERANCES</b> X. ± 1mm X.X ± 0.25mm X.XX ± 0.1mm X.XXX ± 0.01mm	FINISH F0203 (NICKEL PLATE) S/AREA mm <sup>2</sup>	DRAWING NUMBER <b>R6343-02</b>
	TITLE INT./EXT. <b>THREADED SPACER.</b>	DIM'S. IN MM	SCALE N.T.S	

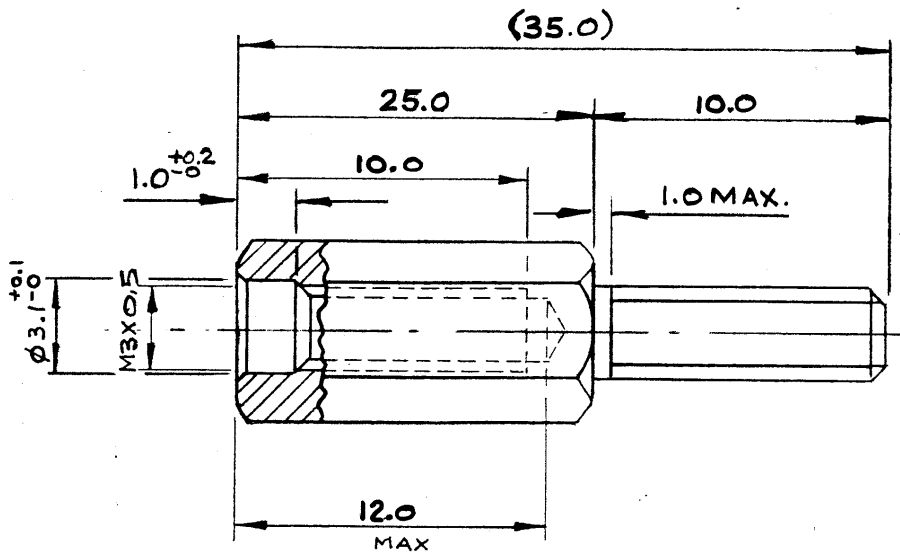
Admet P/4/726

DRAWING NUMBER  
**R6344-02**

THIRD ANGLE PROJECTION

DO NOT SCALE

MACH. No.	
CAM No.	



NOTE: 0.25 CHAMFERS MAX. FOR LEAD IN ON THREADS.  
REMOVE ALL BURRS.  
THREADS TO BE MANUFACTURED IN ACCORDANCE  
WITH BS3643 PT.2 1966

2	16-6-87	14-6-83
1	21/3/86	-
ISS.	DATE	CHANGE
APPD.	<i>[Signature]</i>	
CHKD.	J.C.	
DRAWN K.S		
CUSTOMER REF.		
COMPUTER No. WAS R103241C		
ASSY. DRAWING		
DRAWING NUMBER		<b>R6344-02</b>

**HARWIN ENGINEERS S.A.**  
FITZHERBERT RD., FARLINGTON,  
PORTSMOUTH, PO6 1RT

MATERIAL BRASS TO  
BS2874 CZ121  
TITLE INT./EXT.  
THREADED SPACER.

TOLERANCES  
X. ± 1mm  
X.X ± 0.25mm  
X.XX ± 0.1mm  
X.XXX ± 0.01mm

FINISH F0203 (NICKEL PLATE)  
S/AREA mm<sup>2</sup>  
DIM'S. IN MM  
SCALE N.T.S