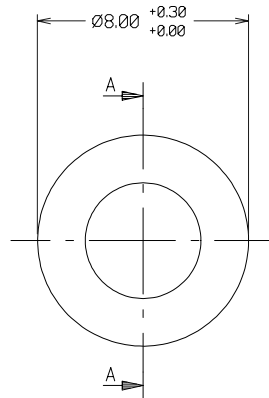
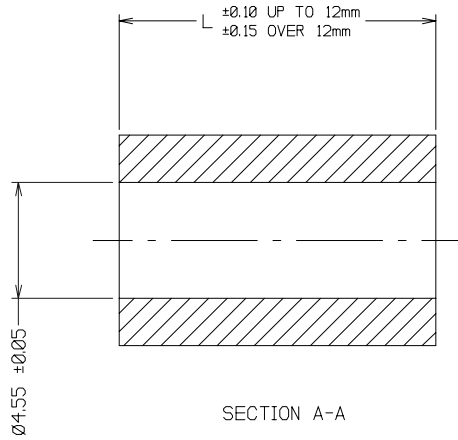


DRAWING No.- R40-661XX00      IF IN DOUBT - ASK      ©      NOT TO SCALE      THIRD ANGLE PROJECTION      ALL DIMENSIONS IN mm



ORDER CODE:  
R40-661XX00  
LENGTH IN mm

NOTES:  
1. REMOVE ALL BURRS.

PART No.	L	PART No.	L
R40-6610300	3.00	R40-6611600	16.00
R40-6610400	4.00	R40-6611800	18.00
R40-6610500	5.00	R40-6612000	20.00
R40-6610600	6.00	R40-6612500	25.00
R40-6610700	7.00	R40-6613000	30.00
R40-6610800	8.00		
R40-6610900	9.00		
R40-6611000	10.00		
R40-6611100	11.00		
R40-6611200	12.00		
R40-6611300	13.00		
R40-6611400	14.00		
R40-6611500	15.00		

3	06.03.97	3786
2	14.12.95	3130
1	15.11.95	----
ISS.	DATE	C/N
APPROVED:		
CHECKED:		
DRAWN: W. BOURNE		
CUSTOMER REF.		
ASSEMBLY DRG:		



HARWIN INC U.S.A. TEL: (812) 285 0055 FAX: (812) 285 0056	HARWIN PLC UK. TEL: (01705) 370451 FAX: (01705) 324010	HARWIN PTE SINGAPORE TEL: 7794909 FAX: 7793868
--	---	---

TOLERANCES  
X = ±1mm  
XX = ±0.25mm  
XXX = ±0.10mm  
X.XXX = ±0.01mm  
ANGLES = ±1°  
UNLESS STATED

MATERIAL:  
NYLON 66 (PLM1561)

FINISH: CLEAN  
S/AREA: mm²

TITLE:  
M4 CIRCULAR  
CLEARANCE SPACER

DRAWING NUMBER:  
R40-661XX00

SHT  
1  
OF  
1