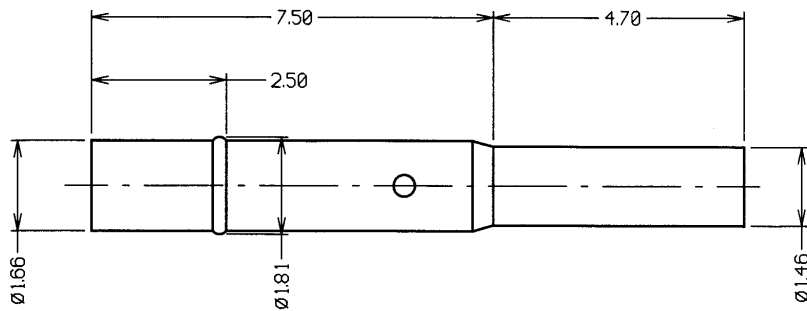


Customer Information Sheet

DRAWING No.: S25-501 SHEET 2 OF 2 IF IN DOUBT - ASK (C) NOT TO SCALE THIRD ANGLE PROJECTION ALL DIMENSIONS IN mm



- NOTES:
1. TO BE USED WITH PROBE P25-4021.
 2. SUITABLE FOR A MINIMUM DISTANCE BETWEEN CENTRES OF 2.54mm.
 3. SPECIFICATIONS FOR PROBE PERFORMANCE ARE GIVEN ON THE PROBE DRAWING.
 4. RECOMMENDED HOLE SIZES:
 ACRYLIC = $\varnothing 1.70\text{mm}$.
 BAKELITE = $\varnothing 1.75\text{mm}$.
 FIBRE REINFORCED PLASTIC = $\varnothing 1.75\text{mm}$.

2	07.03.01	5730
ISS.	DATE	C/NOTE
APPROVED: <i>[Signature]</i>		
CHECKED: <i>[Signature]</i>		
DRAWN: W. J. BOURNE		
CUSTOMER REF.:		
ASSEMBLY DRG.:		

			THIS DRAWING AND ANY INFORMATION OR DESCRIPTIVE MATTER SET OUT HEREON ARE CONFIDENTIAL AND COPYRIGHT PROPERTY OF THE HARWIN GROUP AND MUST NOT BE DISCLOSED, LOANED, COPIED OR USED FOR MANUFACTURING, TENDERING OR FOR ANY OTHER PURPOSE WITHOUT THEIR WRITTEN PERMISSION.	TOLERANCES X. = $\pm 1\text{mm}$ XX. = $\pm 0.25\text{mm}$ XXX. = $\pm 0.10\text{mm}$ XXXX. = $\pm 0.01\text{mm}$ ANGLES = $\pm 1^\circ$ UNLESS STATED	MATERIAL: BRASS	TITLE: 2.54mm MIN. CENTRE TWO-PIECE SPRING PROBE SLEEVE
HARWIN INC U.S.A. TEL: (812) 285 0055 FAX: (812) 285 0056	HARWIN PLC U.K. TEL: 023 9237 0451 FAX: 023 9231 4590	HARWIN PTE SINGAPORE TEL: 65 7794909 FAX: 65 7793868				