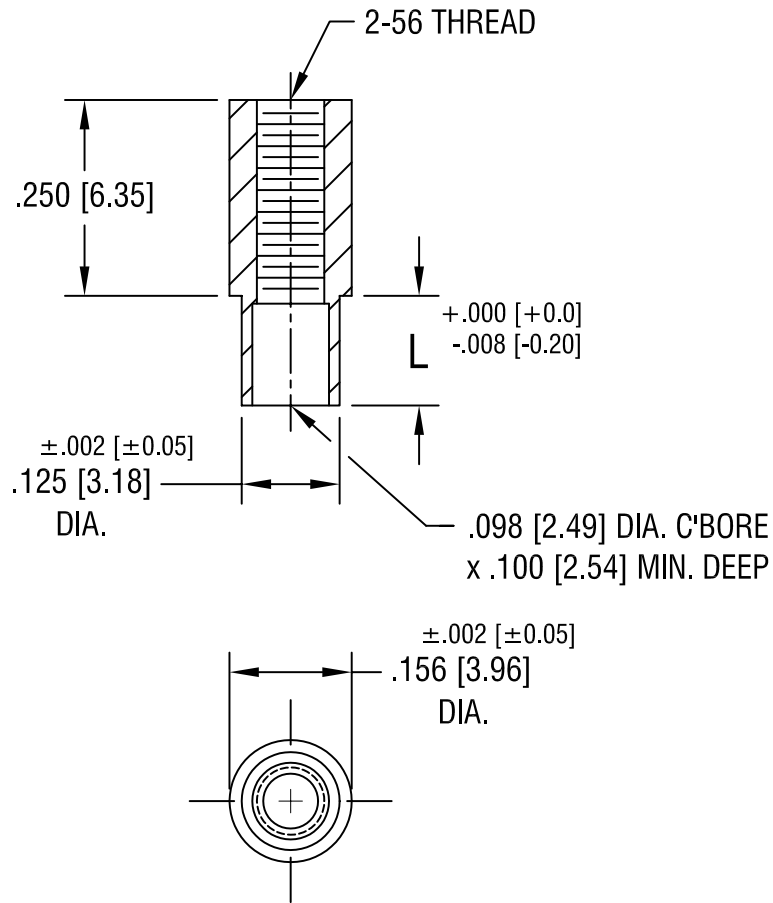


THIS DOCUMENT IS THE PROPERTY OF
KEYSTONE ELECTRONICS CORP. AND
SHALL NOT BE REPRODUCED, DISTRIBUTED
OR USED AS A BASIS FOR MANUFACTURE
WITHOUT PRIOR WRITTEN PERMISSION
FROM KEYSTONE ELECTRONICS CORP.



PART NO.	'L' DIM.
1591-2	.109 [2.77]
1591-3	.140 [3.56]

KEYSTONE ELECTRONICS CORP.			
ASTORIA, N.Y. 11105-2017			
PART NAME SWAGE THREADED STANDOFF			
MATERIAL BRASS			
FINISH DUCTILE NICKEL PLATE		DRN BY BOONE	DATE 12.7.99
		APP'D	SCALE 4X
TOLERANCES INCH [MM]		CODE	DWG NO.
DECIMAL ± .005 [± 0.15]		C/M	1591-
ANGULAR ± 1° UNLESS OTHERWISE SPECIFIED			

5.10.02	CHANGE AS PER ECN 02-034	A
DATE	DESCRIPTION	REV.