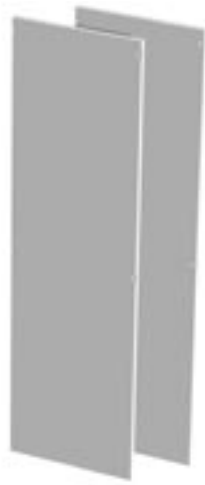


Modular Freestanding Enclosures - NEMA 12

Accessories

Modular Freestanding



IME Side Panels

- Maintains UL/CSA Type 12 approvals.
- Screw fastens into frame.
- Bond studs provided for grounding.
- Finished in beige.
- Packaged in quantities of two.
- Optional tamper resistant screws available...see page 245.



| Part No. (Pair) | For Use With Enclosure A x C (mm) |
|-----------------|-----------------------------------|
| ISP166 | 1600 x 600 |
| ISP168 | 1600 x 800 |
| ISP184 | 1800 x 400 |
| ISP185 | 1800 x 500 |
| ISP186 | 1800 x 600 |
| ISP188 | 1800 x 800 |
| ISP204 | 2000 x 400 |
| ISP205 | 2000 x 500 |
| ISP206 | 2000 x 600 |
| ISP208 | 2000 x 800 |



IME Bridge Panel

- Mounts between inner panels of joined enclosures.
- Finished in white.



| Part No. | For Use With Enclosure Nominal Height (mm) | Overall Dimensions | | |
|----------|--|--------------------|--------|-------|
| | | | Height | Width |
| IBP16 | 1600 | inch | 59.31 | 5.13 |
| | | mm | 1507 | 130 |
| IBP18 | 1800 | inch | 66.31 | 5.13 |
| | | mm | 1684 | 130 |
| IBP20 | 2000 | inch | 75.06 | 5.13 |
| | | mm | 1907 | 130 |



IME Door Mount Rails

- Allows for a variety of door mounting applications.
- Mounts to studs on door.
- Finished in beige.
- Packaged in quantities of two.



| Part No. | For Use With Enclosure Nominal Height (mm) | Usable Height |
|----------|--|---------------|
| IDMR16 | 1600 | inch 50.25 |
| | | mm 1276 |
| IDMR18 | 1800 | inch 57.25 |
| | | mm 1454 |
| IDMR20 | 2000 | inch 64.25 |
| | | mm 1632 |

| Door Width (mm) | Door Mounting Rail Centers | |
|-----------------|----------------------------|-------|
| 600 | inch | 16.13 |
| | mm | 410 |
| 700 | inch | 21.38 |
| | mm | 543 |
| 800 | inch | 21.38 |
| | mm | 543 |
| 1000 | inch | 31.00 |
| | mm | 787 |

Technical references and DXF downloads available at www.hamfmg.com

All dimensions in inches unless specified otherwise

Modular Freestanding Enclosures - NEMA 12

Accessories

Modular Freestanding



Additional Inner Panel

- For use with IME, IFMD and IMET Series.
- Can be used with IPC Series, must order IPC Base Panel Bracket (Part No. **IPCPSK**).
- Replacement or additional mounting panel (standard enclosures include 1 inner mounting panel).
- 12 gauge (IME, IFMD) or 10 gauge (IMET) steel panel.
- Comes complete with all mounting hardware.
- Finished in white.

| Part No | Fits IME/IMET/IFMD Nominal Dimension | | Panel Size (In.) | |
|----------|---|------|------------------|-------|
| | A | B | Height | Width |
| IMEP166 | 1600 | 600 | 61.75 | 17.75 |
| IMEP167 | 1600 | 700 | 61.75 | 22.75 |
| IMEP168 | 1600 | 800 | 61.75 | 26.25 |
| IMEP1612 | 1600 | 1200 | 61.75 | 40.00 |
| IMEP186 | 1800 | 600 | 68.75 | 17.75 |
| IMEP187 | 1800 | 700 | 68.75 | 22.75 |
| IMEP188 | 1800 | 800 | 68.75 | 26.25 |
| IMEP1810 | 1800 | 1000 | 68.75 | 34.12 |
| IMEP1812 | 1800 | 1200 | 68.75 | 40.00 |
| IMEP1816 | 1800 | 1600 | 68.75 | 57.75 |
| IMEP206 | 2000 | 600 | 77.50 | 17.75 |
| IMEP207 | 2000 | 700 | 77.50 | 22.75 |
| IMEP208 | 2000 | 800 | 77.50 | 26.25 |
| IMEP2010 | 2000 | 1000 | 77.50 | 34.12 |
| IMEP2012 | 2000 | 1200 | 77.50 | 40.00 |
| IMEP2016 | 2000 | 1600 | 77.50 | 57.75 |

Side Mount Inner Panel

- For use with IME, IFMD and IMET Series only
- 12 gauge steel.
- Comes complete with all mounting hardware.
- Finished in white.



| Part No. | For Use With Enclosure A x C (mm) | Height | Width |
|----------|--------------------------------------|--------|-------|
| IMEPS166 | 1600 x 600 | 62.75 | 17.12 |
| IMEPS168 | 1600 x 800 | 62.75 | 25.00 |
| IMEPS184 | 1800 x 400 | 69.75 | 9.25 |
| IMEPS185 | 1800 x 500 | 69.75 | 13.12 |
| IMEPS186 | 1800 x 600 | 69.75 | 17.12 |
| IMEPS188 | 1800 x 800 | 69.75 | 25.00 |
| IMEPS204 | 2000 x 400 | 78.50 | 9.25 |
| IMEPS205 | 2000 x 500 | 78.50 | 13.12 |
| IMEPS206 | 2000 x 600 | 78.50 | 17.12 |
| IMEPS208 | 2000 x 800 | 78.50 | 25.00 |

Modular Freestanding Enclosures - NEMA 12

Accessories

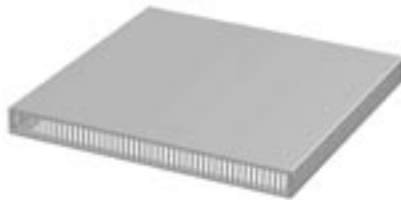
Modular Freestanding



IME Joining Kit

- Connects side by side units at 6 points.
- Maintains UL/CSA Type 12 approvals.
- Finished in beige.

| Part No. | For Use With Enclosure A x C (mm) |
|----------|--------------------------------------|
| IJK166 | 1600 x 600 |
| IJK168 | 1600 x 800 |
| IJK184 | 1800 x 400 |
| IJK185 | 1800 x 500 |
| IJK186 | 1800 x 600 |
| IJK188 | 1800 x 800 |
| IJK204 | 2000 x 400 |
| IJK205 | 2000 x 500 |
| IJK206 | 2000 x 600 |
| IJK208 | 2000 x 800 |



Vented Raised Top

- For use with IME, IFMD and IPC Series only.
- Provides top ventilation in enclosure.
- Cutout diagram provided.
- Comes complete with all mounting hardware.
- Finished in beige.



| Part No | Fits IME/IPC/IFMD Nominal Dimension | | Actual Outside Dimension | | |
|---------|--|-------|--------------------------|--------|--------|
| | B(mm) | C(mm) | A(In.) | B(In.) | C(In.) |
| IPT64 | 600 | 400 | 2.00 | 13.13 | 13.75 |
| IPT65 | 600 | 500 | 2.00 | 13.13 | 17.63 |
| IPT66 | 600/700 | 600 | 2.00 | 13.13 | 21.63 |
| IPT68 | 600/700 | 800 | 2.00 | 13.13 | 29.50 |
| IPT84 | 800 | 400 | 2.00 | 21.63 | 13.75 |
| IPT85 | 800/1000 | 500 | 2.00 | 21.63 | 17.63 |
| IPT86 | 800/1000 | 600 | 2.00 | 21.63 | 21.63 |
| IPT88 | 800/1000 | 800 | 2.00 | 21.63 | 29.50 |

Modular Freestanding Enclosures - NEMA 12

Accessories

Modular Freestanding



Window Door

- For use with IME Series only.
- Provides maximum viewing area of enclosed equipment.
- Maintains NEMA 12 rating.
- UL 94-VO polycarbonate window.
- Removable and reversible for left or right hand opening.
- **NOTE:** Left hand opening will not work with interlock kits.
- Complete with locking handle and required mounting hardware.
- Finished in beige.

| Part No | For Use With Enclosure A x B (mm) | Viewing Area (In.) | |
|-----------|-----------------------------------|--------------------|-------|
| | | A | B |
| IMEWD166 | 1600 x 600 | 56.69 | 15.00 |
| IMEWD167 | 1600 x 700 | 56.69 | 20.00 |
| IMEWD168 | 1600 x 800 | 56.69 | 23.50 |
| IMEWD186 | 1800 x 600 | 63.69 | 15.00 |
| IMEWD187 | 1800 x 700 | 63.69 | 20.00 |
| IMEWD188 | 1800 x 800 | 63.69 | 23.50 |
| IMEWD1810 | 1800 x 1000 | 63.69 | 31.37 |
| IMEWD206 | 2000 x 600 | 72.44 | 15.00 |
| IMEWD207 | 2000 x 700 | 72.44 | 20.00 |
| IMEWD208 | 2000 x 800 | 72.44 | 23.50 |
| IMEWD2010 | 2000 x 1000 | 72.44 | 31.37 |



Solid Door

- For use with the IME Series only.
- Maintains NEMA 12 rating.
- Constructed of 14 gauge steel.
- Smooth action handle provides solid NEMA 12 seal.
- Quick release hinge design allows for easy removal.
- Can fit either front or back of frame.
- Complete with locking handle and required mounting hardware.
- Finished in beige.

| Part No. | For Use With Enclosure A x B (mm) |
|-----------|-----------------------------------|
| IMESD166 | 1600 x 600 |
| IMESD167 | 1600 x 700 |
| IMESD168 | 1600 x 800 |
| IMESD186 | 1800 x 600 |
| IMESD187 | 1800 x 700 |
| IMESD188 | 1800 x 800 |
| IMESD1810 | 1800 x 1000 |
| IMESD206 | 2000 x 600 |
| IMESD207 | 2000 x 700 |
| IMESD208 | 2000 x 800 |
| IMESD2010 | 2000 x 1000 |

Modular Freestanding Enclosures - NEMA 12

Accessories

Modular Freestanding



Printer Shelf

IPC Enclosure Shelves

- Pull-out printer shelf with 3 levels for printer, paper feed and paper collection, finished in black.
- Pull-out server shelf with handle for convenience, finished in white.
- Slides included.

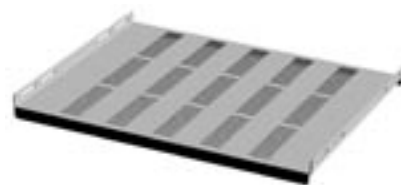


| Printer Shelf Part No. | For Use with Enclosure Nominal Width | Usable Shelf Dimensions | | | |
|------------------------|--------------------------------------|-------------------------|-------|-------|-------|
| | | Height | Width | Depth | |
| IPCPS7 | 700mm | inch | 12.25 | 21.59 | 19.00 |
| | | mm | 311 | 548 | 483 |
| IPCPS8 | 800mm | inch | 12.25 | 25.09 | 19.00 |
| | | mm | 311 | 637 | 483 |



Server Shelf

| Server Shelf Part No. | For Use with Enclosure Nominal Width x Depth | Usable Shelf Dimensions | | |
|-----------------------|--|-------------------------|-------|-------|
| | | Width | Depth | |
| IPCSS76 | 700mm x 600mm | inch | 21.56 | 16.00 |
| | | mm | 548 | 406 |
| IPCSS78 | 700mm x 800mm | inch | 21.56 | 23.88 |
| | | mm | 548 | 607 |
| IPCSS86 | 800mm x 600mm | inch | 25.15 | 16.00 |
| | | mm | 639 | 406 |



IPC Fixed Vented Shelf

- For use with IPC Series only (**NOTE:** standard IPC enclosure with window includes 1 Fixed Vented Shelf for top section as standard).
- Vented shelf provides a sturdy shelf while still allowing air flow.
- Comes complete with all mounting hardware.
- Finished in beige.

| Part No | Fits IPC Nominal Dimension | | Shelf Size (In.) | |
|----------|----------------------------|-----|------------------|-------|
| | B | C | W | D |
| | IPCFSV76 | 700 | 600/800 | 22.75 |
| IPCFSV86 | 800 | 600 | 26.25 | 18.00 |



IPC Base Inner Panel

- For use with IPC Series only
- Provides electrical panel mounting in bottom compartment of IPC enclosure.
- 12 gauge steel panel.
- Comes complete with all mounting hardware.
- Finished in white.
- Not compatible when using IPC shelves.

| Part No | Fits IPC Nominal Dim. | | Panel Size (In.) | |
|---------|-----------------------|-----|------------------|-------|
| | B | C | Ht | Width |
| | IPCBP76 | 700 | 600 | 27.50 |
| IPCBP78 | 700 | 800 | 27.50 | 22.25 |
| IPCBP86 | 800 | 600 | 27.50 | 25.75 |

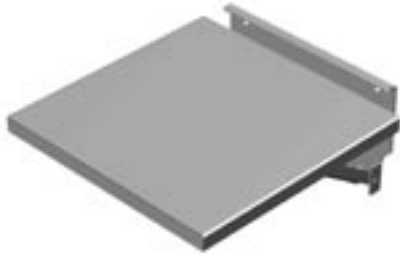


Technical references and DXF downloads available at www.hamfmg.com

All dimensions in inches unless specified otherwise

Modular Freestanding Enclosures - NEMA 12

Accessories



Fold Down Shelf

- Supports various equipment used temporarily to service/program switchgear inside enclosures.
- Mounts with bolts through doors or sides.
- Weight capacity 100 lbs.
- Finished in beige.

| Part No | Work Surface (In.) | |
|----------------|--------------------|----|
| | W | D |
| FDS1212 | 12 | 12 |
| FDS1818 | 18 | 18 |



IME Door Shelf

- Mounts to studs on door or door mount rails (sold separately)...see page 232.
- Can be easily repositioned to various heights, quickly folds up and down.
- Finished in beige.

| Part No. | For Use With Nominal Door Width (mm) | Shelf Dimensions | |
|-------------|--------------------------------------|------------------|--------------|
| | | Width | Depth |
| IDS6 | inch 600 mm | 15.00 381 | 14.06 357 |
| IDS7 | inch 700, 800, 1000 mm | 20.25 514 | 14.06 357 |



Note - subtract 200mm from nominal overall width of IFMD series units to determine main door width (e.g. 1000mm has 800mm door)



Plinth

- Plinths install under enclosure for additional cable entry space or lift access.
- Adds 4" to overall enclosure height.
- 4 corners bolt to enclosure with 4 removable fill panels.
- Not compatible with leveling feet.
- Comes complete with all mounting hardware.
- Two plinths required for IMET, see chart.
- Finished in beige.

| Part No | Fits IME/IPC/IFMD Nominal Dimension | | IMET (2pc.) |
|---------------|-------------------------------------|-----|-------------|
| | B | C | B |
| IPL64 | 600 | 400 | 1200 |
| IPL65 | 600 | 500 | 1200 |
| IPL66 | 600 | 600 | 1200 |
| IPL68 | 600 | 800 | 1200 |
| IPL76 | 700 | 600 | N/A |
| IPL78 | 700 | 800 | N/A |
| IPL84 | 800 | 400 | N/A |
| IPL85 | 800 | 500 | 1600 |
| IPL86 | 800 | 600 | 1600 |
| IPL88 | 800 | 800 | 1600 |
| IPL105 | 1000 | 500 | 2000 |
| IPL106 | 1000 | 600 | 2000 |
| IPL108 | 1000 | 800 | 2000 |



IME Center Depth Support

- Provides additional support to enclosure or suites of joined enclosures housing heavy panel loads.
- Cannot be mounted where a bridge panel is installed.
- Recommended for IFMD enclosures.
- Packaged in quantities of two.
- Finished in beige.

| Part No. (Pair) | Fits Enclosure Depth |
|-----------------|----------------------|
| IMECDS4 | 400 mm |
| IMECDS5 | 500 mm |
| IMECDS6 | 600 mm |
| IMECDS8 | 800 mm |



Technical references and DXF downloads available at www.hamfmg.com

All dimensions in inches unless specified otherwise

Quality Enclosures. Service Excellence.

Modular Freestanding Enclosures - NEMA 12

Accessories

Modular Freestanding



Master Interlock Kit



Slave Interlock Kit



Slave Interlock Joining Kit

Interlock Hardware

- All kits maintain Type 12 approvals.
- **Master Interlock Kit** - for rightmost enclosure.
- **Slave Interlock Kit** - required for each slave door to be interlocked with master door.
- **Slave Interlock Joining Kit** - interlock rods for all single door cabinet widths (not required for first slave unit)
- Yellow zinc-dichromate plated.
- Not compatible with 2 door units (IMET Series).

| Part No. | Description |
|---------------------------|--|
| IMK | Master Interlock Kit (master cabinet only) |
| ISK16 | Slave Interlock Kit for 1600mm high (1 for each slave cabinet) |
| ISK18 | Slave Interlock Kit for 1800mm high (1 for each slave cabinet) |
| ISK20 | Slave Interlock Kit for 2000mm high (1 for each slave cabinet) |
| ISKJ6¹ | Slave Interlock Joining Kit for 600mm wide |
| ISKJ7¹ | Slave Interlock Joining Kit for 700mm wide |
| ISKJ8¹ | Slave Interlock Joining Kit for 800mm wide |
| ISKJ10¹ | Slave Interlock Joining Kit for 1000mm wide |

¹ ISKJ only required to join slave unit to slave unit. For side by side slave units, ISKJ width refers to enclosure on right.



Leveling Feet

- Set of 4 leveling feet available in non-skid or standard base.
- 4 leveling feet will support a maximum of 800 lbs.

| Part No. | Description |
|---------------|----------------------|
| CLFKNS | Non-skid rubber base |
| CLFK | Standard nylon base |



Literature Pocket Kit

- For use as additional or replacement literature pockets.
- Kit includes pocket, high strength two-sided adhesive tape and surface preparation swab.
- Plastic pocket is black.
- Packaged individually.

| Part No. | Height | Width | Depth |
|----------------|--------|-------|-------|
| PKT66 | 6 | 6 | 0.75 |
| PKT99 | 6 | 9 | 0.75 |
| PKT1212 | 12 | 12 | 2.50 |

Technical references and DXF downloads available at www.hamfmg.com

All dimensions in inches unless specified otherwise

Modular Freestanding Enclosures - NEMA 12

Accessories



Remote door switch not included - must be ordered separately.

Light Kit & Accessories

- Light kits are offered in 18", 24" and 48" widths.
- Includes one outlet, features on/off switch.
- Can mount into light mounting channel, bolt through enclosure or by using magnet strip (available separately).
- Door switch available separately for automatic activation (Part No. **FLKDS**).
- T8 fluorescent bulb not included.

| Part No. | Description |
|----------------------------|----------------------------------|
| FLK18T8¹ | 18" Fluorescent Light Kit |
| FLK24T8¹ | 24" Fluorescent Light Kit |
| FLK48T8¹ | 48" Fluorescent Light Kit |
| FLK18MM | Magnet mount for 18" and 24" kit |
| FLK48MM | Magnet mount for 48" light kit |
| FLKDS | Remote Door Switch |

¹ T8 fluorescent bulb not included



IME Door Support Wheel

- Mounts to studs on door.
- Provides easier closing and extra support when significant weight is mounted on the door.

| Part No. | IDSW |
|----------|------|
| | |



IME Tamper Resistant Screw Kit

- Replacement screws for side and rear panels.
- Provide added safety and security.
- Package consists of 8 security hex screws and 1 security hex key.
- Please see the chart below to determine how many kits to order.

| Part No. | ISPTPKIT |
|----------|----------|
| | |

| Component | # Screws Req'd | # Kits to Order |
|-------------------------------|----------------|-----------------|
| Side Panels (Pair) | 8 | 1 |
| Rear Panel (600, 700, 800 mm) | 6 | 1 |
| Rear Panel (1000 mm) | 9 | 2 |
| Rear Panel (1200, 1600 mm) | 12 | 2 |

Modular Freestanding Enclosures - NEMA 12

Accessories

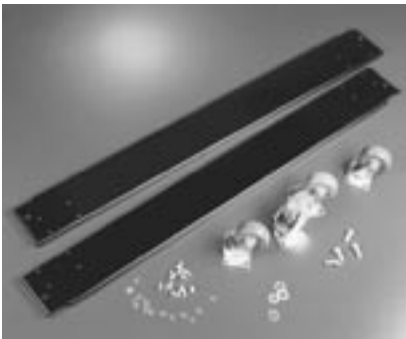
Modular Freestanding



Caster Assembly - Outside Mounting

- Available in either locking or non-locking format.
- Sold in **pairs** allowing for mix of locking and non-locking on same cabinet.
- Wheels have a diameter of 3.5".
- No drilling required as casters fit into built-in caster mounts.
- Mounts outside integral plinth and adds 4.88" to overall cabinet height.
- Side, front or rear mounting.
- 1000 lb. weight capacity per set of four casters.
- Not recommended for use with 1200 or 1600 mm wide units.

| Part No. (Pair) | Description |
|-----------------|-------------|
| CCSTL | Locking |
| CCSTN | Non-Locking |



Caster Assembly - Inside Mounting

- Mounts **inside** integral plinth and adds 1.38" to overall cabinet height.
- 1080 lb. load capacity per set of four casters.
- Not recommended for 400 mm deep units.
- Packaged in quantities of four.
- Finished in black.

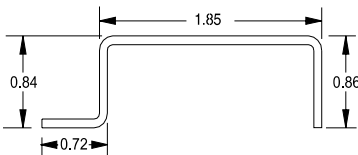
| Part No. | Fits Enclosure Nominal Width (mm) |
|---------------|-----------------------------------|
| ICST6 | 600 |
| ICST7 | 700 |
| ICST8 | 800 |
| ICST10 | 1000 |
| ICST12 | 1200 |
| ICST16 | 1600 |



19"/24" Mounting Rails

- Provides 19" rack mounting centers in 600mm wide units and 24" rack mounting centers in 700mm wide units.
- Pairs of rails are available with mounting hardware in zinc plated (ZPL) finishes.
- Tapped rails are made of 10 gauge steel, are tapped 10-32 with full EIA centers.

| Combination Rails Tapped (Pair) | Fits Enclosure Height mm | Panel Height Inches | EIA Units |
|---------------------------------|--------------------------|---------------------|-----------|
| CCR63TZPL | 1600 | 63.00 | 36 |
| CCR70TZPL | 1800 | 70.00 | 40 |
| CCR78TZPL | 2000 | 78.75 | 45 |



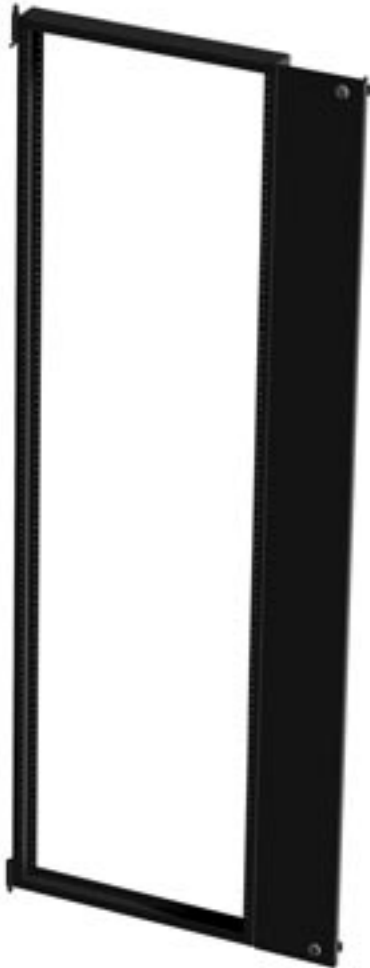
Combination Rails



Modular Freestanding Enclosures - NEMA 12

Accessories

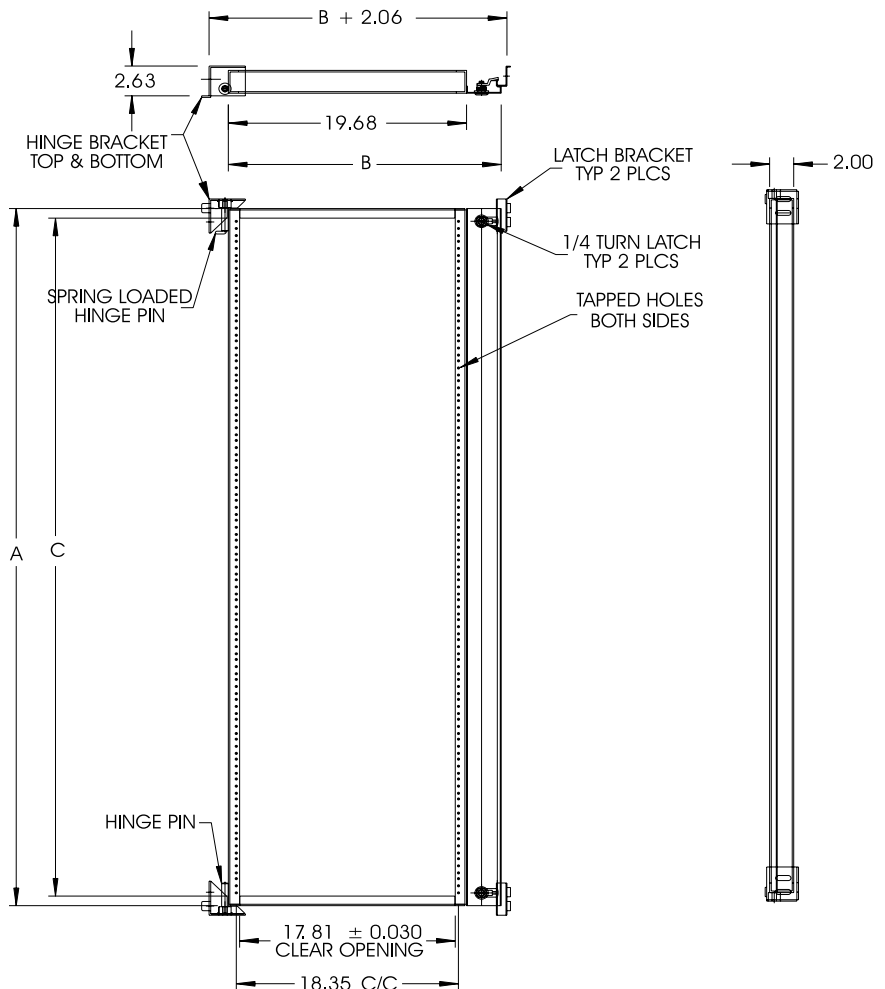
Modular Freestanding



IME Series Swing Frame

- Provides 19" rack mounting in IME Series enclosures.
- Available for 700mm wide and 800mm wide cabinets.
- Can be hinged right or left.
- Can be mounted at any depth in the enclosure.
- Simple installation (4 bolts).
- Spring loaded hinge pins.
- Mounting holes tapped 10-32.
- Finished in flat black.

| Part No | A | B | C | For Use With |
|------------------|-------|-------|------|---------------------------|
| IMESWF167 | 61.25 | 22.54 | 34 U | IME Frame 1600 high x 700 |
| IMESWF168 | 61.25 | 26.04 | 34 U | IME Frame 1600 high x 800 |
| IMESWF187 | 68.25 | 22.54 | 38 U | IME Frame 1800 high x 700 |
| IMESWF188 | 68.25 | 26.04 | 38 U | IME Frame 1800 high x 800 |
| IMESWF207 | 77.00 | 22.54 | 43 U | IME Frame 2000 high x 700 |
| IMESWF208 | 77.00 | 26.04 | 43 U | IME Frame 2000 high x 800 |



Technical references and DXF downloads available at www.hamfmg.com

All dimensions in inches unless specified otherwise

Quality Enclosures. Service Excellence.