

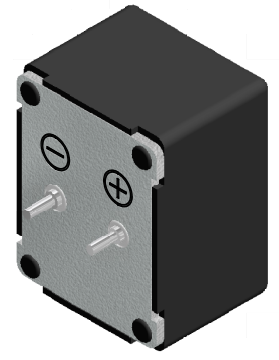
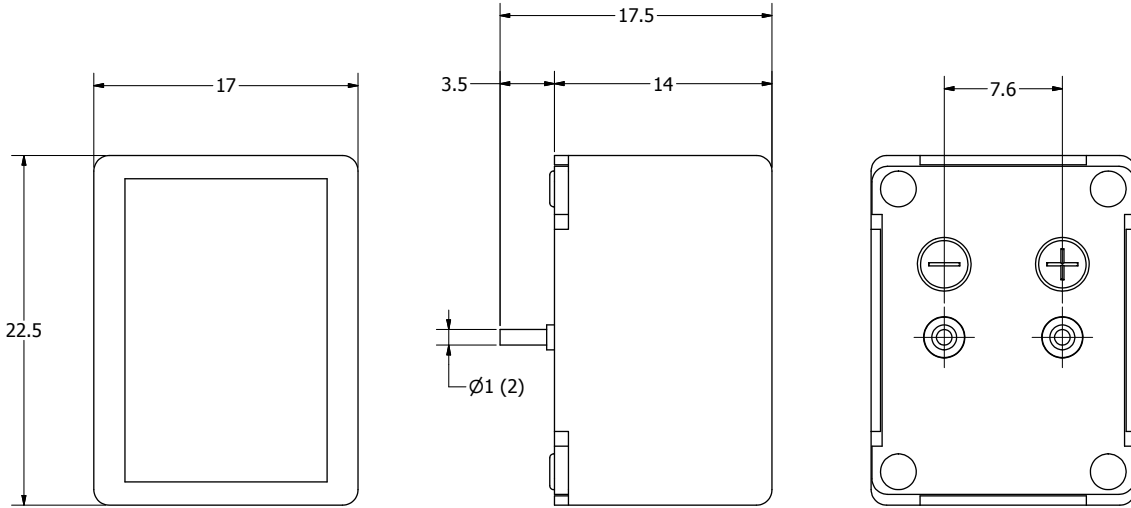
### SPECIFICATIONS

| PARAMETERS              | VALUES           | UNITS        |
|-------------------------|------------------|--------------|
| RATED VOLTAGE           | 12               | Vdc          |
| OPERATING VOLTAGE RANGE | 9 ~ 15           | Vdc          |
| RATED CURRENT (MAX)     | 25               | mA           |
| MINIMUM SPL @ 10 CM     | 81               | dBa          |
| RESONANT FREQUENCY      | 400 ± 100        | Hz           |
| TONE OR PULSE RATE      | CONTINUOUS       | 0 pulse /sec |
| OPERATING TEMPERATURE   | -10 ~ +60        | °C           |
| STORAGE TEMPERATURE     | -20 ~ +70        | °C           |
| HOUSING MATERIAL        | ABS              | -            |
| TERMINAL MATERIAL       | Sn PLATED COPPER | -            |
| WEIGHT                  | 10               | grams        |

THIS DOCUMENT CONTAINS DATA PROPRIETARY TO PROJECTS UNLIMITED, INC. ANY USE OR REPRODUCTION, IN ANY FORM, WITHOUT PRIOR WRITTEN PERMISSION OF PROJECTS UNLIMITED, INC. IS PROHIBITED.  
©2003, Projects Unlimited Inc.

### REVISION HISTORY

| LTR | DESCRIPTION                              | DATE       | APPROVED |
|-----|--|------------|----------|
| -   | RELEASED FROM ENGINEERING                | 5/24/2006  |          |
| A   | ADDED BODY DIMENSION                     | 1/04/2007  | R.W.     |
| B   | REVISED TO INVENTOR 3-D DRAWING TEMPLATE | 12/19/2007 | B.R.     |



#### NOTES:

1. ALL DIMENSIONS ARE IN MILLIMETERS.
2. SPECIFICATIONS SUBJECT TO CHANGE OR WITHDRAWAL WITHOUT NOTICE.
3. THIS PART IS RoHS 2002/95/EC COMPLIANT.

|  |      |  |           |            |                  |             |           |            |
|--|------|--|-----------|------------|------------------|-------------|-----------|------------|
| UNLESS OTHERWISE SPECIFIED:<br>DIMENSIONS ARE IN MILLIMETERS,<br>TOLERANCES ARE ±0.5 AND ANGLES ARE ±3°. | SIZE | Designed by  | Date      | Checked by | Date             | Approved by | Date      | Drawn Date |
|  | A3   | J.D.   | 5/24/2006 | E.P.       | 5/25/2006        | B.R.        | 5/25/2006 | 12/19/2007 |
| AI-2304-TT-12V-R.idw   |      |  |           |            | AI-2304-TT-12V-R |             |           |            |
|  |      |  |           |            | Indicator        |             | Edition   | Sheet      |
|  |      |  |           |            |                  |             | -         | 1 / 1      |