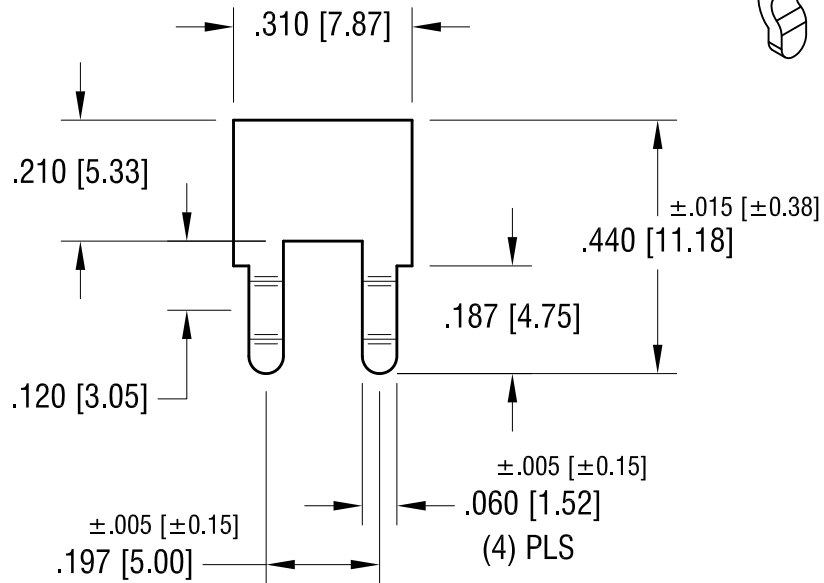
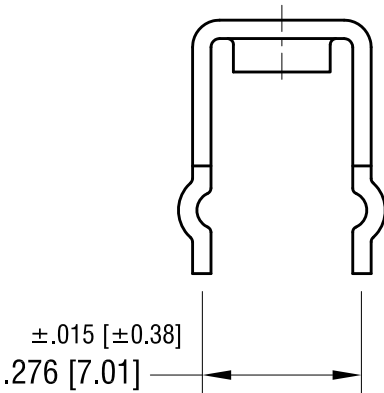
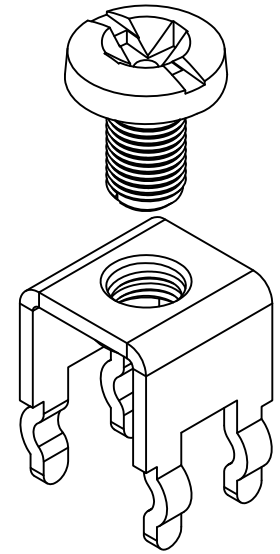
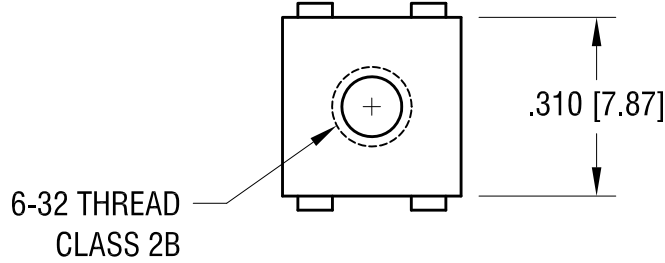
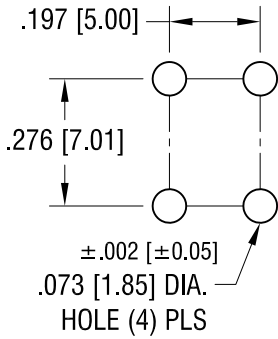


THIS DOCUMENT IS THE PROPERTY OF KEYSTONE ELECTRONICS CORP. AND SHALL NOT BE REPRODUCED, DISTRIBUTED OR USED AS A BASIS FOR MANUFACTURE WITHOUT PRIOR WRITTEN PERMISSION FROM KEYSTONE ELECTRONICS CORP.

**MOUNTING DETAIL**



**PC SCREW TERMINAL WITH COLORED SCREW HEAD**

| PART NO. | HEAD COLOR | PART NO. | HEAD COLOR |
|----------|------------|----------|------------|
| 7691-2   | RED        | 7691-5   | BLUE       |
| 7691-3   | BLACK      | 7691-6   | GREEN      |
| 7691-4   | WHITE      | 7691-7   | YELLOW     |

**NOTE:**

**1. TERMINAL:**

MAT'L - .032 [0.81] TH'K BRASS, MATTE TIN PLATE

SCREW : ONE (1) 6-32 x 1/4 L., SUPPLIED LOOSE.

MAT'L - BRASS, NICKEL PLATE

**KEYSTONE ELECTRONICS CORP.**

www.keyelco.com • ASTORIA, N.Y. 11105-2017 • Tel (718) 956-8900

|   |           |                                   |                 |
|---|-----------|-----------------------------------|-----------------|
| PART NAME<br>PC SCREW TERM. W/ COLORED SCREW HEAD   |           |                                   |                 |
| MATERIAL<br>AS NOTED  |           |                                   |                 |
| FINISH<br>AS NOTED  |           | DRN BY<br>BOONE                   | DATE<br>10.1.03 |
|   |           | APP'D                             | SCALE<br>3X     |
| TOLERANCES INCH [MM]<br>DECIMAL ±.010 [±0.25]<br>ANGULAR ± 1°<br>UNLESS OTHERWISE SPECIFIED | CODE<br>C | DWG NO.<br><b>7691-2 - 7691-7</b> |                 |

|         |                          |      |
|---------|--------------------------|------|
| 7.13.09 | CHANGE AS PER ECN 09-099 | B    |
| 1.3.08  | CHANGE AS PER ECN 08-021 | A    |
| DATE    | DESCRIPTION              | REV. |