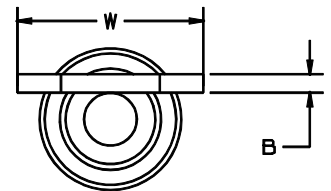


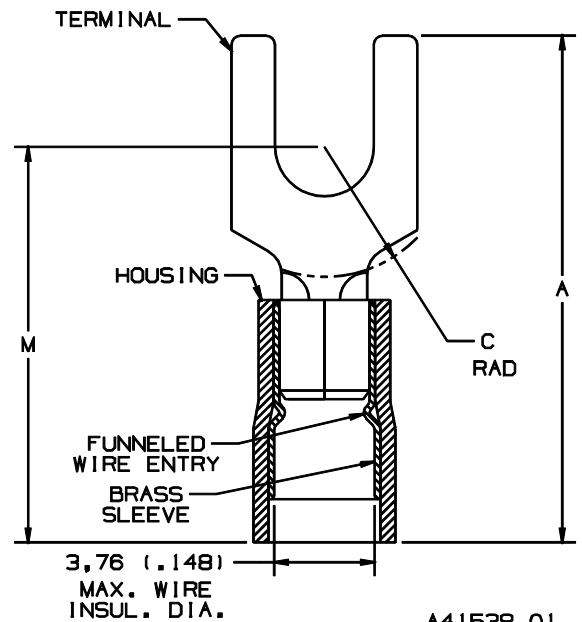
THIS COPY IS PROVIDED ON A RESTRICTED BASIS AND IS NOT TO BE USED IN ANY WAY DETRIMENTAL TO THE INTERESTS OF PANDUIT CORP.

| PART NUMBER | | STUD SIZE | WIRE RANGE mm ² | DIMENSIONS mm | | | | |
|-------------|----------|-----------|-------------------------------|-----------------|----------------|---------------|--------------|----------------|
| PREFIX | PK | | | A ±.50 | W ±.25 | C ±.38 | B ±.25 | M ±.50 |
| PMNF1-3F | -C -M | M3 | 0,5-1,5 (.22-.18) | 21,08 (.83) | 5,84 (.23) | 5,08 (.20) | ,81 (.03) | 17,53 (.69) |
| PMNF1-4F | -C -M | M4 | 0,5-1,5 (.22-.18) | 22,61 (.89) | 8,13 (.32) | 5,84 (.23) | ,81 (.03) | 18,29 (.72) |
| PMNF1-5F | -C -M | M5 | 0,5-1,5 (.22-.18) | 22,86 (.90) | 8,89 (.35) | 6,35 (.25) | ,81 (.03) | 18,80 (.74) |
| PMNF1-6F | -C -M | M6 | 0,5-1,5 (.22-.18) | 27,43 (1.08) | 11,18 (.44) | 8,38 (.33) | ,81 (.03) | 21,08 (.83) |



NOTES:

- USED FOR:
A. 600V MAX. VOLTAGE RATING
B. 105°C (221°F) MAX. TEMP. RATING
C. STRANDED COPPER WIRE
- PACKAGE QTY:
A. STD: C=100
B. BULK: M=1000
- MATERIAL:
A. STAMPING: COPPER, TIN PLATED
B. HOUSING: NYLON, RED
- WIRE STRIP LENGTH: $5,6^{+.8}_{-0}$ ($7/32^{+1/32}_{-0}$)
- INSTALLATION TOOLS: REF DWGS.
A41522, A41523, A41524, A41525
- DIMENSIONS IN BRACKETS ARE IN INCHES OR AWG



| | | | | | | | | |
|-----|-------|----|-----|----------------------------------|-------|------|--|---|
| | | | | | | | PANDUIT CORP. TINLEY PARK, ILLINOIS | |
| 01 | 10/97 | TM | | CHANGED DECIMAL POINTS TO COMMAS | | | 0,5-1,5 mm ² METRIC NYLON INSULATED, FUNNELED ENTRY FORK TERMINAL | |
| 00 | 2/92 | DL | SJ | RELEASED | | | 00816 | LA KS |
| REV | DATE | BY | CHK | DESCRIPTION | ECN # | CUST | PM | DRAWN BY DRL CHK'D SCALE NONE DRAWING NO. A41538 |