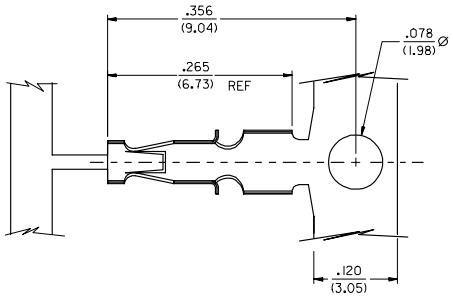


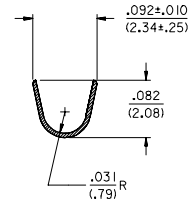
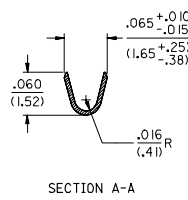
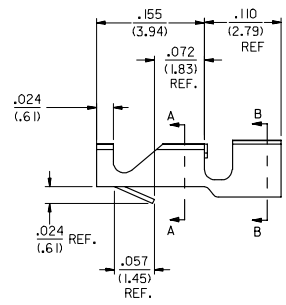
13 12 11 10 9 8 7 6 5 4 3 2 1

J  
I  
H  
G  
F  
E  
D  
C  
B  
A



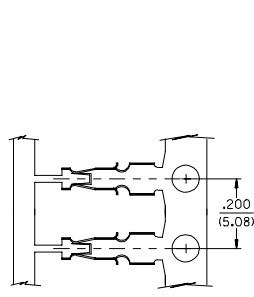
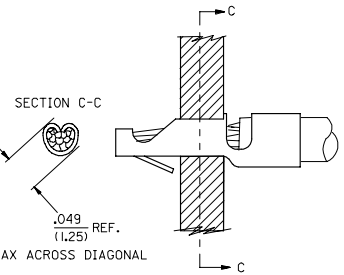
- NOTES:
1. MATERIAL: (1.015±.011)/.006±.0004 BRASS ALLOY 260
  2. TERMINALS CONFORM TO SOLERABILITY SPEC I52
  3. TERMINAL FOR USE WITH 22-26 AWG STRANDED WIRE OR 22 AWG SOLID WIRE. INSULATION DIA (1.52)/.060 MAX
  4. WIND PER ES-339-B
  5. PLATING PER SDES-88  
(909) • OVERALL HOT TIN DIP: .00254 MICROMETERS MIN.
  6. RECOMMENDED PC BOARD HOLE SIZE: (1.29±.05) / .051±.002 DIA.
  7. RECOMMENDED PC BOARD THICKNESS: (1.57±.20) / .062±.008
  8. PRODUCT SPECIFICATION: PS-4706-001
  9. ENG. NO. 42001-0004 AVAILABLE IN MOLEX BRAZIL ONLY.

\*THE PRIMARY SHIPPING CARTON WILL BE LABELED 'COMPLIANT TO ROHS DIRECTIVE 2002/95/EC AND ELV ANNEX II OF DIRECTIVE 2000/53/EC.\* CARTONS WITHOUT THIS LABEL MAY CONTAIN PRODUCT WITH TIN-LEAD PLATING.



SECTION A-A

SECTION B-B



EDP NO.	ENG NO.	PLT
040-08-0605	42001-0001	P909
040-02-0601	42001-0002	I22
040-01-0610	42001-0003	999
040-08-0606	42001-0004	P224

SEE NOTE 9

QUALITY SYMBOLS	GENERAL TOLERANCES (UNLESS SPECIFIED)		DRAWN BY	DATE	TITLE	SCALE	DESIGN UNITS	THIRD ANGLE PROJECTION
	mm	INCH						
▽=0	4 PLACES ±---	±---	KSAMIEC	09/09/94	TERMINAL STRAIN RELIEF (5.08)/2.00 CENTERS	---	INCH	☉ □
▽=0	3 PLACES ±---	±.010	CHECKED BY	DATE				
	2 PLACES ±0.38	±.015	APATEL	09/09/94				
	1 PLACE ±---	±---	APPROVED BY	DATE				
	ANGULAR ±1/2°		BLENZ	09/09/94				
DRAFT WHERE APPLICABLE MUST REMAIN WITHIN DIMENSIONS			MATERIAL NO.	DOCUMENT NO.	SHEET NO.			
			SEE CHART	SD-42001	1 OF 1			

CHANGE TO ME10  
EC NO: UCP2005-0966  
DRAWN BY: INDL 7881/11/9  
CHKD: SAMIEC 2008/01/08  
APPR: MMAGLUS 2008/01/08

MOLEX INCORPORATED

12 11 10 9 8 7 6 5 4 3 2 1

J  
I  
H  
G  
F  
E  
D  
C  
B  
A