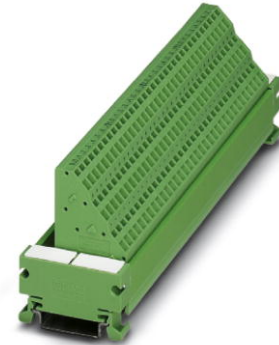


UM 45-FLK50/32IM/ZFKDS/PLC


Order No.: 2965224



<http://eshop.phoenixcontact.de/phoenix/treeViewClick.do?UID=2965224>

VARIOFACE COMPACT LINE, sensor module for the connection of 32 p-n-p sensors, for assembly on DIN rail NS 35/7.5, spring-cage connection



Commercial data	
GTIN (EAN)	
sales group	I631
Pack	1 pcs.
Customs tariff	85369010
Catalog page information	Page 259 (IF-2011)

Product notes

WEEE/RoHS-compliant since:
07/14/2006



<http://www.download.phoenixcontact.com>
Please note that the data given here has been taken from the online catalog. For comprehensive information and data, please refer to the user documentation. The General Terms and Conditions of Use apply to Internet downloads.

Technical data	
General data	
Nominal voltage U_N	60 V DC
Max. current carrying capacity per branch	1 A
Max. total current of voltage supply	2 A (per byte)
Number of positions	50

Width	197 mm
Height	45 mm
Depth	61 mm
Status display	No
Ambient temperature (operation)	-20 °C ... 50 °C
Ambient temperature (storage/transport)	-20 °C ... 70 °C
Test voltage	500 V (50 Hz, 1 min.)
Mounting position	Any
Standards/regulations	IEC 60664
	DIN EN 50178
	IEC 62103
Pollution degree	2
Surge voltage category	II

Connection data

Connection 1	Field level
Connection method	Spring-cage connection
Conductor cross section solid min.	0.2 mm ²
Conductor cross section solid max.	2.5 mm ²
Conductor cross section stranded min.	0.2 mm ²
Conductor cross section stranded max.	1.5 mm ²
Conductor cross section AWG/kcmil min.	24
Conductor cross section AWG/kcmil max	14
Stripping length	8 mm
Connection 2	Control system level
Number of connections	1
Connection method	Flat-ribbon cable plug connector in acc. with IEC 60603-13
Number of positions	50

Certificates / Approvals

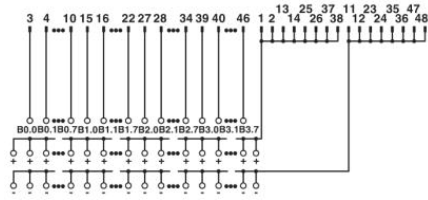


Certification

GOST

Diagrams/Drawings

Circuit diagram



UM 45-FLK50/32IM/ZFKDS/PLC connection scheme

Address

PHOENIX CONTACT Inc., USA
586 Fulling Mill Road
Middletown, PA 17057, USA
Phone (800) 888-7388
Fax (717) 944-1625
<http://www.phoenixcon.com>



© 2011 Phoenix Contact
Technical modifications reserved;