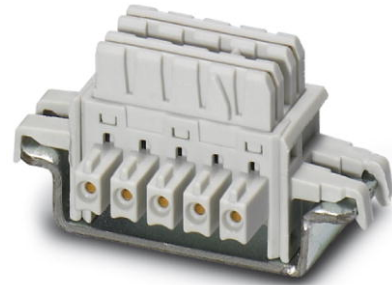



ME 6,2 TBUS-2 1,5/5-ST-3,81KMGY

Order No.: 2969401




<http://eshop.phoenixcontact.de/phoenix/treeViewClick.do?UID=2969401>

DIN rail bus connector for potential bridging of devices arranged next to one another across all modules.

Commercial data	
GTIN (EAN)	 4 017918 975210
sales group	F052
Pack	10 pcs.
Customs tariff	85366990
Catalog page information	Page 617 (CC-2011)

Product notes

WEEE/RoHS-compliant since:
08/28/2003



<http://www.download.phoenixcontact.com>
Please note that the data given here has been taken from the online catalog. For comprehensive information and data, please refer to the user documentation. The General Terms and Conditions of Use apply to Internet downloads.

Technical data

Technical data	
Nominal current I_N	8 A
Nominal voltage U_N	125 V
Nominal voltage, UL/CUL Use Group B	150 V
Nominal current, UL/CUL Use Group B	8 A

Nominal voltage, UL/CUL Use Group D	150 V
Nominal current, UL/CUL Use Group D	8 A

Certificates / Approvals

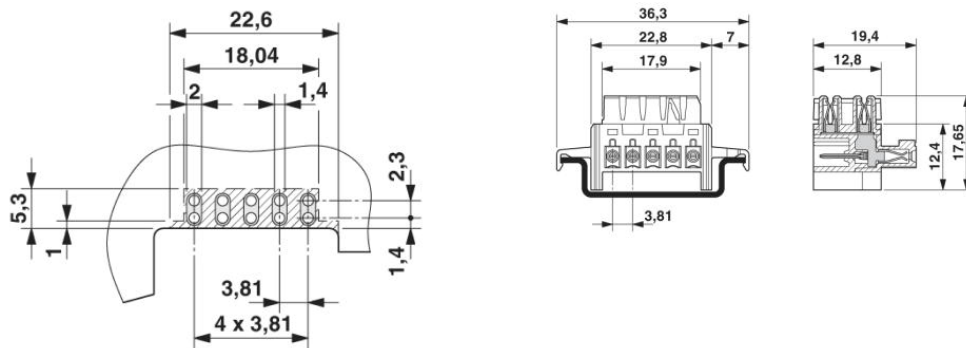


Certification

CUL, UL

Diagrams/Drawings

Dimensioned drawing



Address

PHOENIX CONTACT Inc., USA
586 Fulling Mill Road
Middletown, PA 17057, USA
Phone (800) 888-7388
Fax (717) 944-1625
<http://www.phoenixcon.com>



© 2011 Phoenix Contact
Technical modifications reserved;