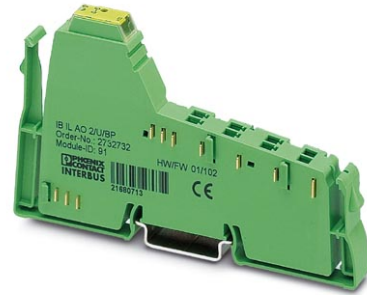


# IB IL AO 2/U/BP


Order No.: 2732732



<http://eshop.phoenixcontact.de/phoenix/treeViewClick.do?UID=2732732>


Inline analog output terminal block, without accessories, 2 outputs, 0-10 V, 10 V, 2-wire connection method



Commercial data	
GTIN (EAN)	 4 017918 187125
sales group	K412
Pack	1 pcs.
Customs tariff	85389091
Catalog page information	Page 82 (AX-2007)

**Product notes**

WEEE/RoHS-compliant since:  
02/10/2007



<http://www.download.phoenixcontact.com>  
Please note that the data given here has been taken from the online catalog. For comprehensive information and data, please refer to the user documentation. The General Terms and Conditions of Use apply to Internet downloads.

## Product description

The analog Inline output terminals are used in applications in which analog actuators are to be addressed.

With these terminals, common voltage output ranges can be configured individually. The analog signals are made available with a resolution of 13 bits.

It goes without saying that you also have advantages in handling with the analog Inline output terminals, such as multi-wire connection or the automatic contact with the grounding conductor when the terminal is snapped onto the DIN rail.

The Inline terminals can be labeled using hinged labeling fields. The fields have insert cards that can be labeled individually to suit the application. Additionally, there is the proven ZBFM-6... Zack strip for labeling the terminal points.

## Technical data

### General data

Width	12.2 mm
Height	119.8 mm
Depth	71.5 mm
Weight	48 g
Mounting type	DIN rail
Ambient temperature (operation)	-25 °C ... 55 °C
Ambient temperature (storage/transport)	-25 °C ... 85 °C
Permissible humidity (operation)	10 % ... 95 % (according to DIN EN 61131-2)
Permissible humidity (storage/transport)	10 % ... 95 % (according to DIN EN 61131-2)
Air pressure (operation)	70 kPa ... 106 kPa (up to 3000 m above sea level)
Air pressure (storage/transport)	70 kPa ... 106 kPa (up to 3000 m above sea level)
Degree of protection	IP20
Protection class	III, IEC 61140, EN 61140, VDE 0140-1
Test section	7.5 V supply (bus logic), 24 V supply $U_{ANA}$ / I/O 500 V AC 50 Hz 1 min
	7.5 V supply (bus logic), 24 V supply $U_{ANA}$ /functional earth ground 500 V AC 50 Hz 1 min
	24 V supply (I/O) / functional earth ground 500 V AC 50 Hz 1 min

### Interface

Name	Inline local bus
Connection method	Inline data jumper
Transmission speed	500 kbps
	500 kBit/s
Transmission physics	Copper

### Inline potential routing

Communications power $U_L$	7.5 V DC (via voltage jumper)
Current consumption from $U_L$	max. 40 mA
	Typ. 33 mA
I/O supply voltage $U_{ANA}$	24 V DC
Current consumption from $U_{ANA}$	max. 35 mA
	Typ. 25 mA

**Analog outputs**

Number of outputs	2
Connection method	2-wire (shielded)
Output name	Analog outputs
D/A conversion time	< 100 µs
Type of protection	Transient protection of outputs
Data formats	IL, IB ST
Measured value representation	16 bits (15 bits + sign bit)
DAC resolution	13 Bit
Process data update	< 2 ms
Load/output load current output	> 2 kΩ
Voltage output signal	0 V ... 10 V -10 V ... 10 V
Load/output load voltage output	> 2 kΩ 0.05 %
Precision	Typ. 0.02 % (of output range final value)

**Certificates / Approvals**



Certification	ABS, CUL, DNV, GL, GOST, UL
Certification Ex:	CUL-EX LIS, UL-EX LIS
Certifications applied for:	LR / BV

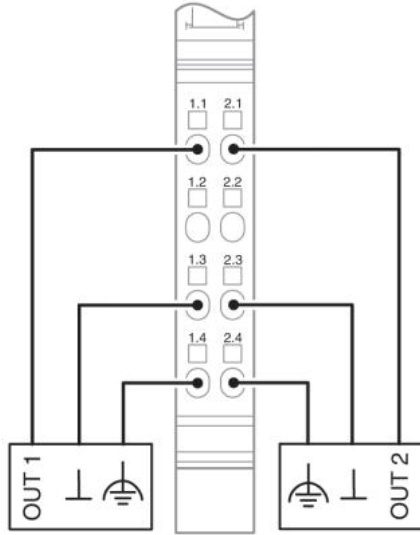
**Accessories**

Item	Designation	Description
<b>Marking</b>		
0809492	ESL 62X10	Insert strip for laser printer, lettering field: 62 x 10 mm
2727501	IB IL FIELD 2	Labeling field, width: 12.2 mm
<b>Plug/Adapter</b>		
2732664	IB IL AO/CNT-PLSET	Connector set

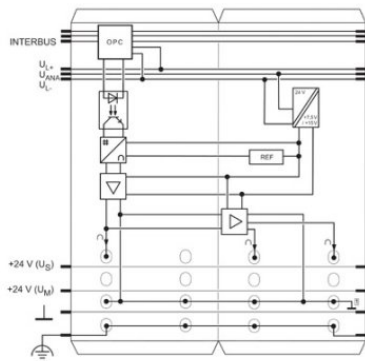
2726353	IB IL SCN-6 SHIELD	Inline shield connector
2726337	IB IL SCN-8	Connector, for digital 1, 2 or 8-channel Inline terminals
2727608	IB IL SCN-8-CP	Inline connector, colored

**Diagrams/Drawings**

Connection diagram

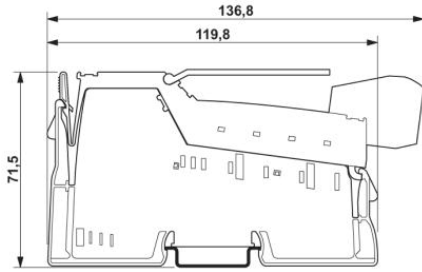


Block diagram



Dimensioned drawing

---



**Address**

PHOENIX CONTACT Inc., USA  
586 Fulling Mill Road  
Middletown, PA 17057, USA  
Phone (800) 888-7388  
Fax (717) 944-1625  
<http://www.phoenixcon.com>



© 2011 Phoenix Contact  
Technical modifications reserved;