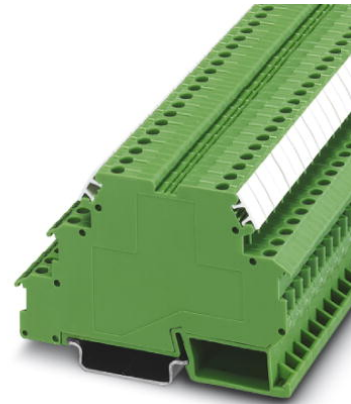


DEK-TR/INV


Order No.: 2964319




<http://eshop.phoenixcontact.de/phoenix/treeViewClick.do?UID=2964319>

Inverter module. The inverter module inverts the signals of ground switching n-p-n transistor outputs into plus switching p-n-p outputs, and vice versa.



Commercial data	
GTIN (EAN)	
sales group	G042
Pack	10 pcs.
Customs tariff	85364190
Catalog page information	Page 153 (IF-2011)

Product notes
WEEE/RoHS-compliant since: 01/02/2006


<http://www.download.phoenixcontact.com>
 Please note that the data given here has been taken from the online catalog. For comprehensive information and data, please refer to the user documentation. The General Terms and Conditions of Use apply to Internet downloads.

Technical data	
Technical data	
Supply voltage range	20 V DC ... 30 V DC (U _v)
Continuous current	200 mA
Residual voltage drop	< 1 V

Leakage current	< 1 mA
Max. transmission frequency	15 kHz
NPN input/PNP output	
Switch-on threshold	< 5 V (at $U_V = 24\text{ V}$; < ($U_V - 19\text{ V}$))
Switch-off threshold	> 15 V (at $U_V = 24\text{ V}$; > ($U_V - 9\text{ V}$))
Min. limit values	-2 V
Max. limit values	26 V (at $U_V = 24\text{ V}$; $U_V + 2\text{ V}$)
PNP input/NPN output	
Switch-on threshold	> 19 V
Switch-off threshold	< 9 V
Min. limit values	-2 V
Max. limit values	26 V (at $U_V = 24\text{ V}$; $U_V + 2\text{ V}$)
Connection data	
Conductor cross section solid min.	0.2 mm ²
Conductor cross section solid max.	4 mm ²
Conductor cross section stranded min.	0.2 mm ²
Conductor cross section stranded max.	2.5 mm ²
Conductor cross section AWG/kcmil min.	24
Conductor cross section AWG/kcmil max	12
Connection method	Screw connection
Stripping length	8 mm
Screw thread	M3
General data	
Width	6.2 mm
Height	80 mm
Depth	56 mm
Ambient temperature (operation)	-20 °C ... 50 °C
Ambient temperature (storage/transport)	-20 °C ... 70 °C
Mounting position	Any
Assembly instructions	In rows with zero spacing
Standards/regulations	IEC 60664
	Basic insulation
Pollution degree	2

Surge voltage category	II
Color	green
Housing material	Polyamide PA non-reinforced

Certificates / Approvals

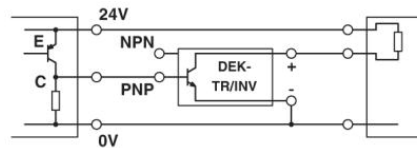
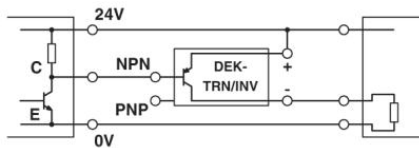


Certification

CUL, GOST, UL

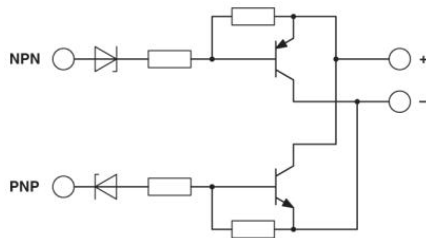
Diagrams/Drawings

Application drawing



a = NPN output
 b = load

Circuit diagram



Address

PHOENIX CONTACT Inc., USA
586 Fulling Mill Road
Middletown, PA 17057, USA
Phone (800) 888-7388
Fax (717) 944-1625
<http://www.phoenixcon.com>



© 2011 Phoenix Contact
Technical modifications reserved;