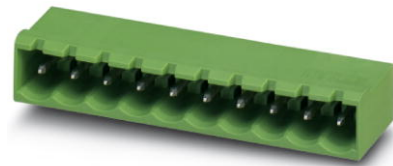


## EMSTBA 2,5/ 2-G


Order No.: 1899841

The figure shows a 10-position version of the product



<http://eshop.phoenixcontact.de/phoenix/treeViewClick.do?UID=1899841>

Header, Nominal current: 12 A, Rated voltage (III/2): 320 V, Number of positions: 2, Pitch: 5 mm, Color: green, Assembly: Press-in

| Commercial data          |  |
|--------------------------|--|
| GTIN (EAN)               | <br>4 017918 170141 |
| Note                     | Made-to-order  |
| sales group              | E115   |
| Pack                     | 50 pcs.  |
| Customs tariff           | 85366990   |
| Catalog page information | Page 284 (CC-2011)   |

### Product notes

WEEE/RoHS-compliant since:  
01/01/2003



<http://www.download.phoenixcontact.com>  
Please note that the data given here has been taken from the online catalog. For comprehensive information and data, please refer to the user documentation. The General Terms and Conditions of Use apply to Internet downloads.

## Technical data

| Dimensions / positions |        |
|------------------------|--------|
| Length                 | 12 mm  |
| Pitch                  | 5 mm   |
| Dimension a            | 5 mm   |
| Number of positions    | 2      |
| Pin dimensions         | 1,7 mm |

|                                     |                 |
|-------------------------------------|-----------------|
| Hole diameter                       | 1.75 mm         |
| <b>Technical data</b>               |                 |
| Range of articles                   | EMSTBA 2,5/..-G |
| Insulating material group           | IIIa            |
| Rated surge voltage (III/3)         | 4 kV            |
| Rated surge voltage (III/2)         | 4 kV            |
| Rated surge voltage (II/2)          | 4 kV            |
| Rated voltage (III/2)               | 320 V           |
| Rated voltage (II/2)                | 400 V           |
| Connection in acc. with standard    | EN-VDE          |
| Nominal current I <sub>N</sub>      | 12 A            |
| Nominal voltage U <sub>N</sub>      | 250 V           |
| Maximum load current                | 12 A            |
| Insulating material                 | PBT             |
| Inflammability class acc. to UL 94  | V0              |
| Color                               | Green           |
| Nominal voltage, UL/CUL Use Group B | 250 V           |
| Nominal current, UL/CUL Use Group B | 12 A            |
| Nominal voltage, UL/CUL Use Group D | 300 V           |
| Nominal current, UL/CUL Use Group D | 10 A            |

#### Certificates / Approvals



Certification

CB, CUL, GOST, UL, VDE-PZI

#### Accessories

| Item            | Designation           | Description   |
|-----------------|-----------------------|---|
| <b>Assembly</b> |                       |   |
| 1877203         | EMSTB 2,5-SH          | Stamp holder, for upper and lower stamp   |
| 1877216         | EMSTBVA 2,5-SS-1-5,08 | Stamp set, consisting of an upper and lower stamp, upper stamp: 2 to 16-pos., lower stamp: 2 to 24-pos., pitch: 5.08 mm |

|         |                       |  |
|---------|-----------------------|--|
| 1877229 | EMSTBVA 2,5-SS-2-5,08 | Stamp set, consisting of an upper and lower stamp, upper stamp: 17 to 24-pos., lower stamp: 2 to 24-pos., pitch: 5.08 mm |
| 1755477 | MSTB-BL               | Keying cap, for forming sections, plugs onto header pin, green insulating material                                       |

**Marking**

|         |                       |   |
|---------|-----------------------|---|
| 0804183 | SK 5/3,8:FORTL.ZAHLEN | Marker card, printed horizontally, self-adhesive, 12 identical decades marked 1-10, 11-20 etc. up to 91-(99)100, sufficient for 120 terminal blocks |
|---------|-----------------------|---|

**Plug/Adapter**

|         |         |  |
|---------|---------|--|
| 1734401 | CR-MSTB | Coding section, inserted into the recess in the header or the inverted plug, red insulating material |
|---------|---------|--|

**Additional products**

| Item            | Designation    | Description  |
|-----------------|----------------|--|
| <b>Assembly</b> |                |  |
| 1909210         | FKCT 2,5/ 2-ST | Plug component, Nominal current: 12 A, Rated voltage (III/2): 320 V, Number of positions: 2, Pitch: 5 mm, Connection method: Spring-cage conn., Color: green |

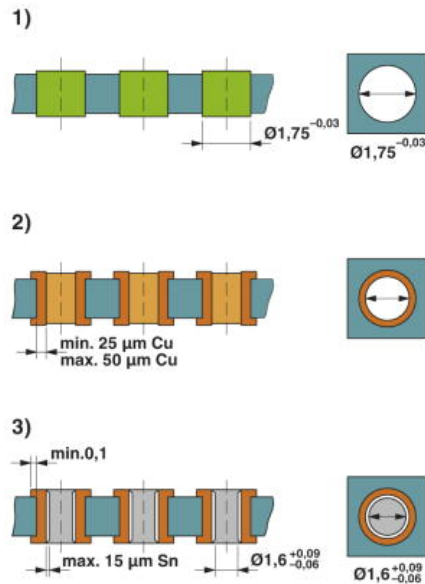
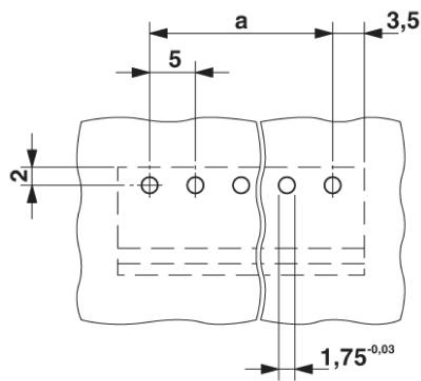
**General**

|         |                      |  |
|---------|----------------------|--|
| 1910351 | FKC 2,5/ 2-ST        | Plug component, Nominal current: 12 A, Rated voltage (III/2): 320 V, Number of positions: 2, Pitch: 5 mm, Connection method: Spring-cage conn., Color: green |
| 1909715 | FKCVR 2,5/ 2-ST      | Plug component, Nominal current: 12 A, Rated voltage (III/2): 320 V, Number of positions: 2, Pitch: 5 mm, Connection method: Spring-cage conn., Color: green |
| 1910034 | FKCVW 2,5/ 2-ST      | Plug component, Nominal current: 12 A, Rated voltage (III/2): 320 V, Number of positions: 2, Pitch: 5 mm, Connection method: Spring-cage conn., Color: green |
| 1779411 | FRONT-MSTB 2,5/ 2-ST | Plug component, Nominal current: 12 A, Rated voltage (III/2): 320 V, Number of positions: 2, Pitch: 5 mm, Connection method: Screw connection, Color: green  |
| 1754449 | MSTB 2,5/ 2-ST       | Plug component, Nominal current: 12 A, Rated voltage (III/2): 320 V, Number of positions: 2, Pitch: 5 mm, Connection method: Screw connection, Color: green  |
| 1765771 | MSTBP 2,5/ 2-ST      | Plug component, Nominal current: 12 A, Rated voltage (III/2): 320 V, Number of positions: 2, Pitch: 5 mm, Connection method: Screw connection, Color: green  |
| 1779835 | MSTBT 2,5/ 2-ST      | Plug component, Nominal current: 12 A, Rated voltage (III/2): 320 V, Number of positions: 2, Pitch: 5 mm, Connection method: Screw connection, Color: green  |

|         |                  |   |
|---------|------------------|---|
| 1792016 | MVSTBR 2,5/ 2-ST | Plug component, Nominal current: 12 A, Rated voltage (III/2): 320 V, Number of positions: 2, Pitch: 5 mm, Connection method: Screw connection, Color: green |
| 1792524 | MVSTBW 2,5/ 2-ST | Plug component, Nominal current: 12 A, Rated voltage (III/2): 320 V, Number of positions: 2, Pitch: 5 mm, Connection method: Screw connection, Color: green |
| 1768765 | SMSTB 2,5/ 2-ST  | Plug component, Nominal current: 12 A, Rated voltage (III/2): 320 V, Number of positions: 2, Pitch: 5 mm, Connection method: Screw connection, Color: green |

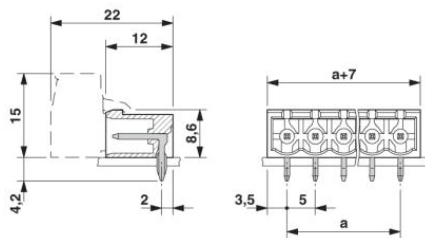
**Diagrams/Drawings**

Drilling plan/solder pad geometry



Drill hole layout in FR4 or EP-GC basic material

Dimensioned drawing



**Address**

PHOENIX CONTACT Inc., USA  
586 Fulling Mill Road  
Middletown, PA 17057, USA  
Phone (800) 888-7388  
Fax (717) 944-1625  
<http://www.phoenixcon.com>



© 2011 Phoenix Contact  
Technical modifications reserved;