

## GSG Series Right Angle Gang Jack

### Features



- Available in up to 8 Ports
- Available Fully Shielded for Category 5 Applications
- Standard and Reflow Compatible Through Hole Designs Available
- CSA/NRTL Certified File No. LR78160

### Performance Specifications

#### Materials and Finish

##### Housing Material

PBT Thermoplastic, Glass Filled, UL94V-0 Rated, Black Color

##### Shield

Copper Alloy, Nickel Plated

##### Contact Material

Phosphor Bronze

#### Electrical Characteristics

##### Insulation Resistance

500 Megohms Min

##### Dielectric Withstanding Voltage

1000V AC for 1 Minute

##### Contact Resistance

20 Milliohms Max

##### Current Rating

1.5 Amps

## MODULAR JACKS AND PLUGS

### GSG Series

#### Electrical Performance

Category 5 100MHz bandwidth performance.

Attenuation @ 100MHz less than 0.13dB.

Performance meets Near End Crosstalk (NEXT)

requirements of -40dB @ 100MHz per EIA/TIA 568A

in applications where UL approved Category 5 cable

(GA27-3773-1) is used.

Shielded types offer 20dB shielding from 30MHz to 300MHz

#### Ordering Information

GSG	-	NS	-	4	-	8	-	8	-	-
Series		Shield Option		No. of Ports		Size of Ports		No. of Contacts		Ground Pin Spacing

#### Series

GSG - Right Angle Gang Jack P.C.B. Mount

#### Shield Options - Consult Specifications for Details

N - Non-Shielded

NS - Shielded

NS2 - Shielded with Top Only Ground Tabs

NS7 - Shielded with Top and Side Ground Tabs

#### Number of Ports

2, 4, 5, 6, 8

#### Size of Ports

8 - 8 Positions

#### Number of Contacts

8 - 8 Contacts

#### Ground Pin Spacing for NS shield

Blank - 3.68

4.57 - 4.57mm

#### Ground Pin Spacing for NS2 shield

3.68 - 3.68mm

4.57 - 4.57mm

#### Ground Pin Spacing for NS7 shield

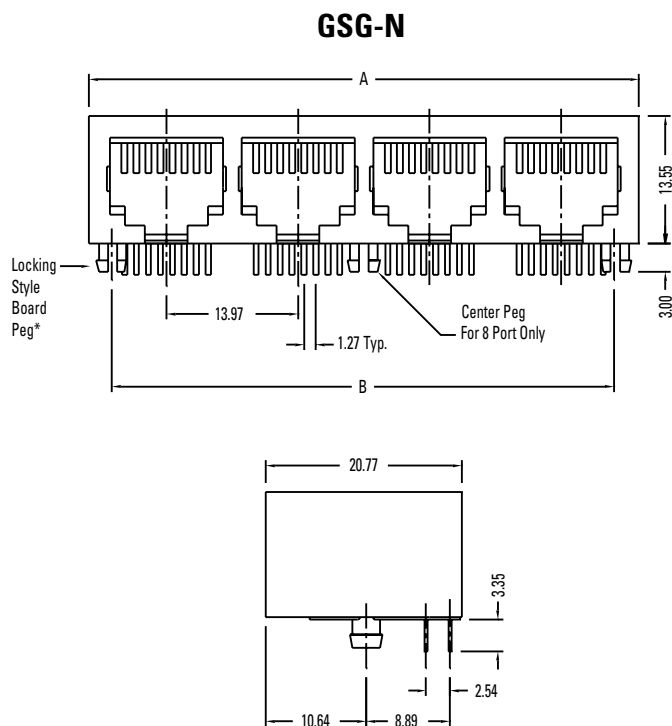
4.57 - 4.57mm

#### Plating Options

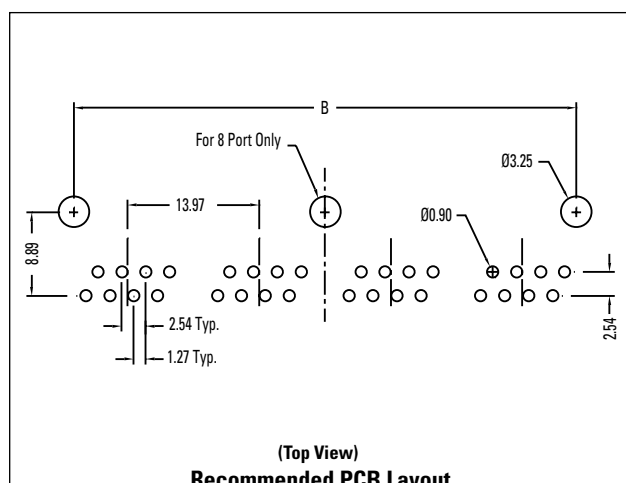
Designator	Plating Description
Standard	Contacts are Plated with 0.0001 Nickel, Selective Plating 0.000015 Gold on Contact area
50	Contacts are Plated with 0.0001 Nickel, Selective Plating 0.000050 Gold on Contact area to Comply with FCC Requirements Under No. 47 C.F.R. Part 68 Subpart F

## GSG Series Dimensions

Dimensions in mm



### GSG-N



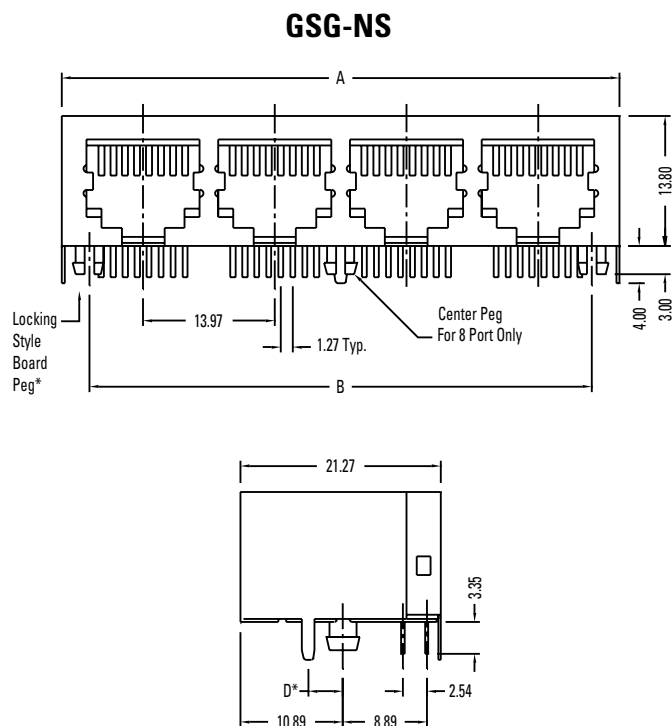
Please Consult Factory for PCB Layout for 5 Port

GSG-N	Number of Ports				
	2	4	5	6	8
A	30.48	58.42	72.39	86.36	114.30
B	25.40	53.34	67.31	81.28	109.22

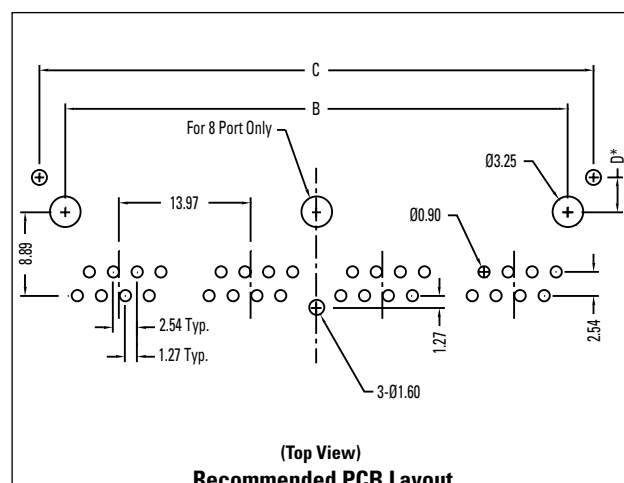
\*Some options only available in Diamond Style Board Peg.

## GSG Series Dimensions

Dimensions in mm



### GSG-NS



Please Consult Factory for PCB Layout for 5 Port

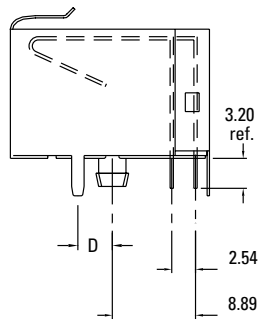
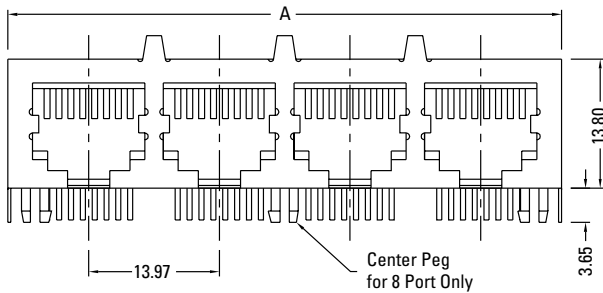
GSG-NS	Number of Ports				
	2	4	5	6	8
A	31.12	59.03	73.03	87.00	114.94
B	25.40	53.34	67.31	81.28	109.22
C	30.87	58.81	72.78	86.75	114.69

D\* Ground Pin Spacing, see Page 76 for available options.

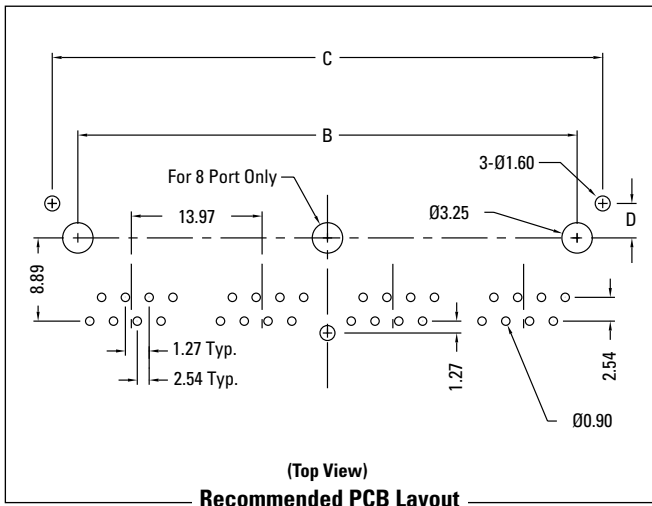
### GSG Series Dimensions

Dimensions in mm

#### GSG-NS2



#### GSG-NS2



GSG-NS2	Number of Ports			
	2	4	6	8
A	31.12	59.03	87.00	114.94
B	25.40	53.34	81.28	109.22
C	30.87	58.81	86.75	114.69

D\* Ground Pin Spacing, see Page 76 for available options.

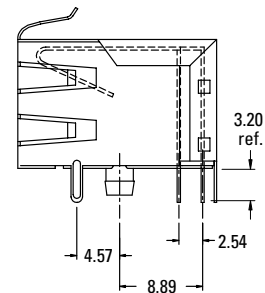
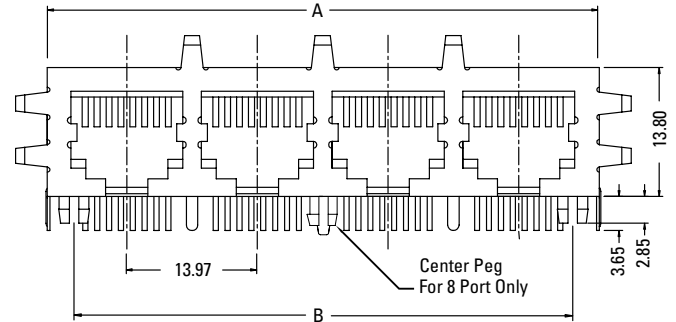
## MODULAR JACKS AND PLUGS

### GSG Series

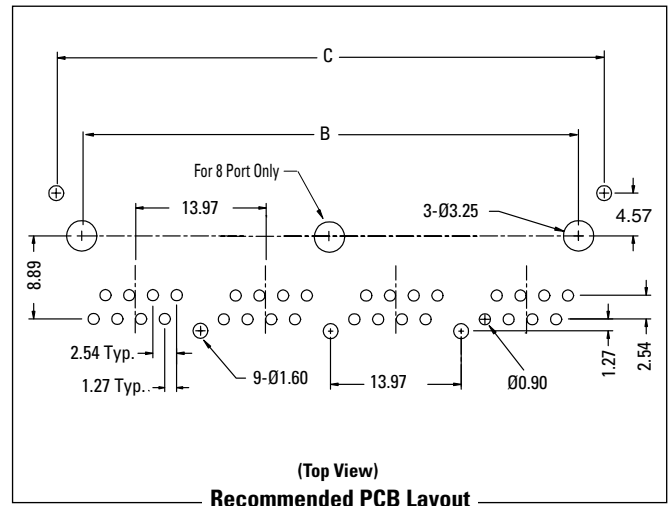
### GSG Series Dimensions

Dimensions in mm

#### GSG-NS7



#### GSG-NS7



GSG-NS7	Number of Ports	
	4	8
A	59.03	114.94
B	53.34	109.22
C	58.81	114.69