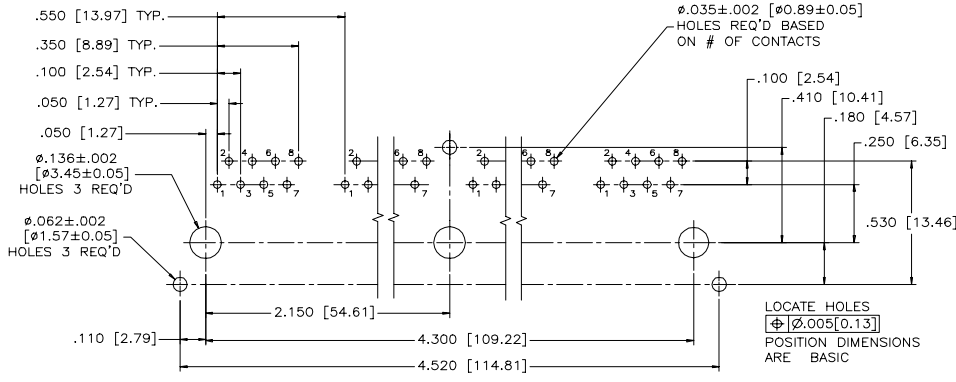
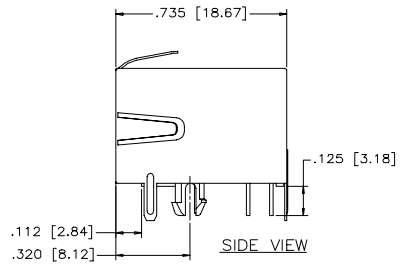
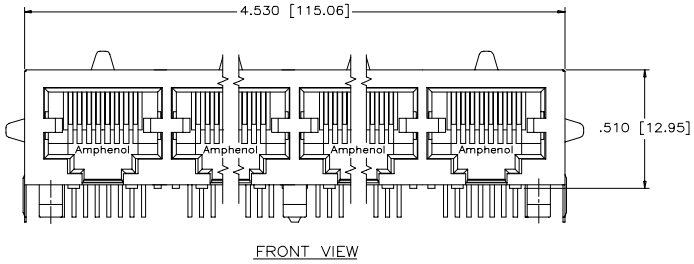


REVISIONS				
SYM	ZONE	ECN, ERN NO.	DATE	APPRD.
A		PROPOSAL	01/24/01	

THIS IS A CAD DRAWING. DO NOT MANUALLY REVISE.

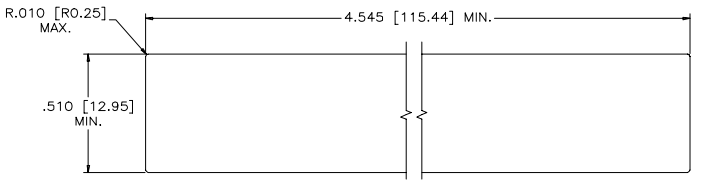


- MATERIALS:**
 PLASTIC HOUSING: ENGINEERING THERMOPLASTIC
 FLAMMABILITY RATING UL 94V-0
- CONTACTS:** PHOSPHOR BRONZE
 PLATING: 50 µ" [1.27 MICRONS]
 MIN. GOLD ON MATING SURFACES.
 50 µ" [1.27 MICRONS]
 MIN. NICKEL UNDERPLATE
 100 µ" [2.54 MICRONS]
 MIN. TIN/LEAD ON CONTACT TAILS.
- SHIELD:** COPPER ALLOY
 PLATING: TIN-LEAD ALLOY

RECOMMENDED P.C.B. LAYOUT
 (COMPONENT SIDE OF BOARD)
 (FRJA-438-08 SHOWN, FOOTPRINT FOR
 OTHER PART NUMBERS BASED ON
 # OF CONTACTS & RELATED POSITIONS)

PART NUMBER: FRJA-43X-08

- CONTACTS:**
 2 = 2 CONTACTS LOADED IN POSITION 4 & 5.
 4 = 4 CONTACTS LOADED IN POSITION 3 TO 6.
 6 = 6 CONTACTS LOADED IN POSITION 2 TO 7.
 8 = 8 CONTACTS LOADED IN POSITION 1 TO 8.
 C = 2 CONTACTS LOADED IN POSITION 3 & 6.



RECOMMENDED PANEL CUTOUT

THIS DOCUMENT CONTAINS PROPRIETARY INFORMATION AND SUCH INFORMATION
 MAY NOT BE DISCLOSED TO OTHERS FOR ANY PURPOSE OR USED FOR MANUFACTURING
 PURPOSES WITHOUT WRITTEN PERMISSION FROM AMPHENOL CANADA CORP.

DRAWN L.CHAN	DATE 01/24/01	Amphenol Canada Corp.			
DESIGNED					
CHECKED L.DENG	DATE 01/24/01	TITLE 8 PORT, MODULAR JACK, 8 POSITIONS, WITHOUT FERRITE, SHIELDED (FRONT PCB TAILS)			
I. E. APPRD.					
Q. A. APPRD.		DWG. DRAWING NO. P-FRJA-43X-08			
DWG. APPRD.					
ENG. REL. NO.		SCALE	WT. -----	SURF. -----	SHEET 1 OF 1
REF. EAR 11273		DIMENSIONS ARE IN INCHES [mm]	03554		