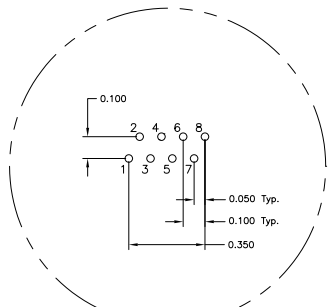
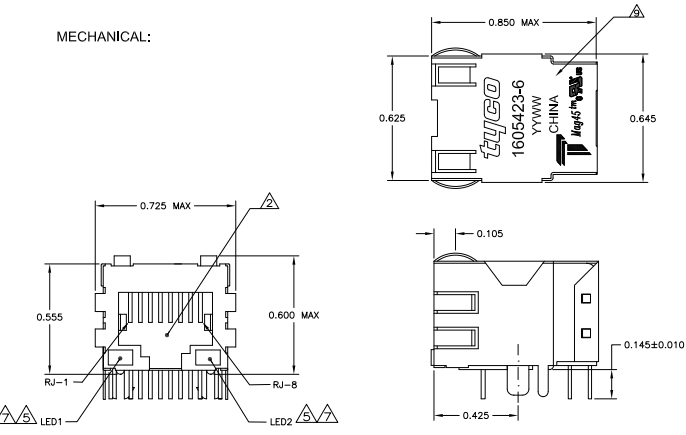
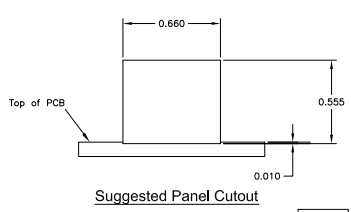


| REV | DATE | DESCRIPTION | BY | CHK | APP |
|-----|------|---------------------------|--------|-----|-----|
| AA | 22 | | | | |
| B2 | | REVISED PER ECO-11-005140 | 22MM11 | RK | HWR |

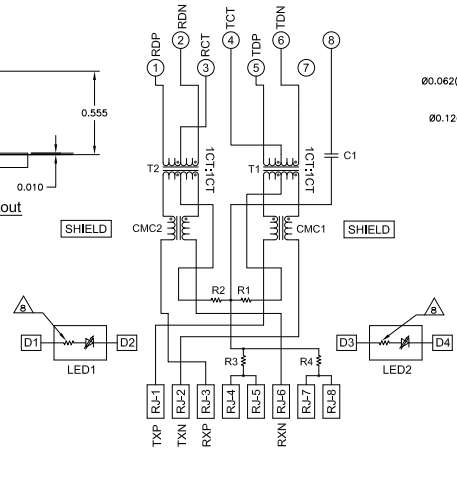
MECHANICAL:



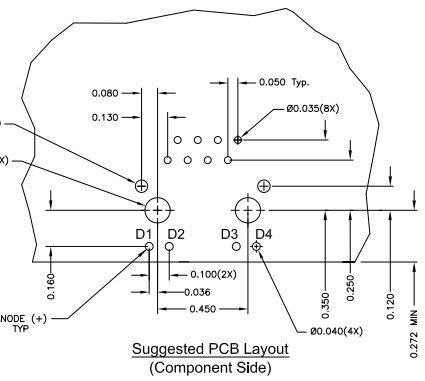
Pin Designations



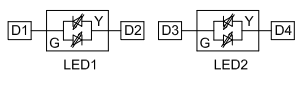
426 SERIES MAGNETIC CIRCUIT



C1=1000 pF, 2kV DECOUPLING CAPACITOR.
 R1-R4 = 75 OHMS, 1/16 W, RESISTORS.



Suggested PCB Layout (Component Side)



BI-COLOR LED CONFIGURATION FOR 1605423-6 ONLY

NOTES:

- △ MATERIALS:
 HOUSING - THERMOPLASTIC PET POLYESTER FLAMMABILITY RATING UL 94V-0
 SHIELD - .010" THICK, C26800 BRASS PREPLATED WITH 80-150μINCH SEMI-BRIGHT NICKEL, POST-DIPPED WITH 100μINCH MIN TIN-LEAD.
 MOD JACK CONTACTS - .012" x .018" PHOSPHOR BRONZE, 50μINCH MIN OVERALL NICKEL UNDERPLATE, WITH SELECT 50μINCH MIN HARD GOLD FINISH PLATE.
 SOLDER TAILS WITH 50μINCH MIN TIN-LEAD FINISH PLATE.
 LIGHT EMITTING DIODE(LEDS) - DIFFUSED EPOXY LENS, .020" x .020" CARBON STEEL WIREFRAME LEADS PREPLATED WITH 90μINCH SILVER OVER 40μINCH NICKEL UNDERPLATE OVER 80μINCH COPPER UNDERPLATE, POST-PLATED WITH 300μINCH THICK TIN-LEAD.
- △ RJ45 JACK CAVITY CONFORMS TO FCC RULES AND REGULATIONS PART 68, SUB PART F.
- △ MAGNETICS:
 -IMPEDANCE: 100 OHMS
 -TRANSMIT OPEN CIRCUIT INDUCTANCE (OCL): 350μH (MIN) @100KHZ, 0.1V RMS WITH 8 mA DC BIAS
 -RISE TIME: 25 NANO-SECONDS FROM 10 TO 90 PERCENT.
 -TURNS RATIO (CHP: CABLE): TX: 11, RX: 11
 PERFORMANCE:
 -TRANSMIT RJ1 & 2, RECEIVE RJ3 & 6.
 -INSERTION LOSS: FREQUENCY: 100 KHZ TO 100 MHZ TX/RX: -11 DB (MAX)
 -RETURN LOSS: FREQUENCY: 1 MHZ TO 60 MHZ TX/RX: -18.0 DB (MIN)
 FREQUENCY: 60.1 MHZ TO 80 MHZ TX/RX: -15.0 DB (MIN)
 FREQUENCY: 80.1 MHZ TO 100 MHZ TX/RX: -12.0 DB (MIN)
 -CROSS TALK: NEXT (TX TO RX) 35.0 DB (MIN) @100MHZ
 -TX CMRR: FREQUENCY: 100KHZ TO 100 MHZ, 42.0 DB (MIN)
 -RX CMRR: FREQUENCY: 100KHZ TO 100 MHZ, 33.0 DB (MIN)
 HIPOT (ISOLATION VOLTAGE):
 -1500 VRMS (0.5 mA CUTOFF CURRENT) FOR 60 SECONDS DURATION WITHOUT DECOUPLING CAPACITOR.
 2250 VDC (1 mA CUTOFF CURRENT) FOR 60 SECONDS DURATION WITH DECOUPLING CAPACITOR.
 -ALL BRIDGED ON EITHER SIDE OF MAGNETICS PACKAGE FOR RJ-45 CONTACTS. OPERATING TEMPERATURE: FROM 0° - +70°C
- △ ALL DIMENSIONS NOMINAL UNLESS OTHERWISE NOTED.
- △ LED COMPLIANT WITH IEC60825-1 SAFETY OF LASER PRODUCTS. WHEN OPERATED AT 20 mA.
- △ INDICATED CONNECTIONS ARE FOR NIC CONFIGURATION. THE MAGNETICS ARE ASYMMETRICAL, AND THEREFORE DO NOT SUPPORT AUTO-MDI/MDIX.
- △ LED PEAK WAVELENGTH: GREEN(I) = 565nm
 YELLOW(I) = 585nm
- △ THESE 250 OHM RESISTORS ARE INCLUDED IN THE LEDS ON 1-1605423-1 5-1605423-1 AND 6-1605423-1 ONLY.
- △ TRADEMARK, PART NUMBER, DATE CODE, COUNTRY OF ORIGIN AND AGENCY APPROVAL MARKING IN APPROXIMATE LOCATION SHOWN.
- △ OBSOLETE PARTS: OBSOLETE CIS STREAMLINING PER D.RENAUD/D.SINISI

| YES | GREEN | GREEN | 6-1605423-1 |
|-----|--------------|--------------|-------------|
| YES | GREEN | YELLOW | 5-1605423-1 |
| NO | GREEN | GREEN | 4-1605423-1 |
| NO | GREEN | GREEN | 1-1605423-7 |
| NO | GREEN/YELLOW | GREEN/YELLOW | 1605423-6 |

THIS DRAWING IS A CONTROLLED DOCUMENT.

| | | | |
|----------|-----------|-------------|---------------|
| DESIGNER | W. HOSGER | REVISIONS | |
| DATE | 10/08/08 | REVISED PER | ECO-11-005140 |
| APP'D | | BY | |
| CHECKED | | DATE | |

TE Connectivity
 426 SERIES CIRCUIT, SHIELDED, OPTIONAL DECOUPLING CAPACITOR, WITH LEDS

111 MAGNOSTM, ANZ SCHEMATIC, 1008-2100

REVISED PER ECO-11-005140

1605423

1605423

1605423

1605423