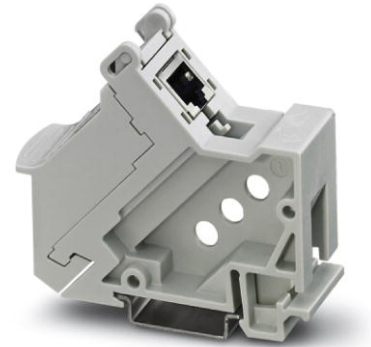


VS-PP-F-RJ45-CAT6


Order No.: 1658118

<http://eshop.phoenixcontact.de/phoenix/treeViewClick.do?UID=1658118>

Patch panel, RJ45, DIN rail mounting, IP20, one slot, IDC connection, CAT6

Ethernet

**Commercial data**

GTIN (EAN)	
sales group	D552
Pack	1 pcs.
Customs tariff	85366990
Catalog page information	Page 326 (PC-2011)

Product notesWEEE/RoHS-compliant since:
11/16/2007<http://>www.download.phoenixcontact.com
Please note that the data given here has been taken from the online catalog. For comprehensive information and data, please refer to the user documentation. The General Terms and Conditions of Use apply to Internet downloads.**Technical data****Mechanical characteristics**

Number of positions	8
Number of slots	1
Shielded	Yes
Insertion/withdrawal cycles	≥ 750

Connection method	IDC fast connection
Conductor cross-section	0.2 mm ² ... 0.32 mm ²
Connection cross-section AWG	24 ... 22
External cable diameter	4.5 mm ... 8 mm
Color	gray
Ambient temperature (operation)	-10 °C ... 60 °C
Ambient temperature (storage/transport)	-40 °C ... 70 °C

Material data

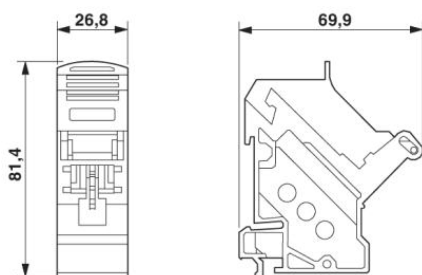
Inflammability class acc. to UL 94	V0
Housing material	PC-GF
Contact carrier material	PC
Contact material	Copper alloy
Contact surface material	Gold over nickel
Degree of protection	IP20

Electrical characteristics

Number of positions	8
Transmission characteristics (category)	CAT6
Rated current	1 A

Diagrams/Drawings

Dimensioned drawing



RJ45 patch panel

Address

PHOENIX CONTACT Inc., USA
586 Fulling Mill Road
Middletown, PA 17057, USA
Phone (800) 888-7388
Fax (717) 944-1625
<http://www.phoenixcon.com>



© 2011 Phoenix Contact
Technical modifications reserved;