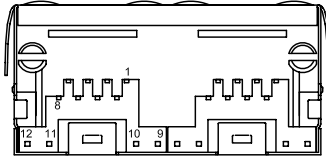
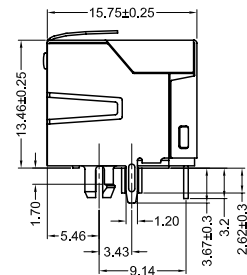
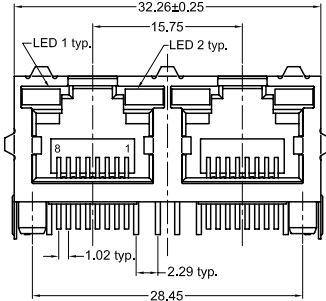
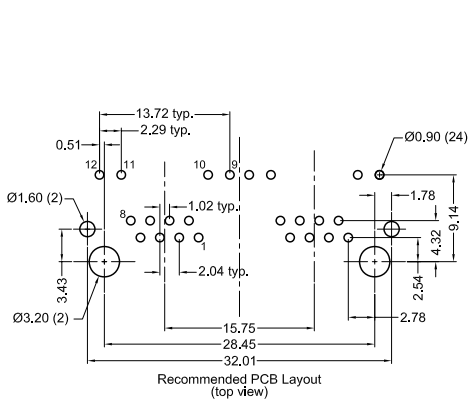


KYCON, Inc. 1810 Little Orchard Street, San Jose, CA 95125 (408)494-0330

NOTE:

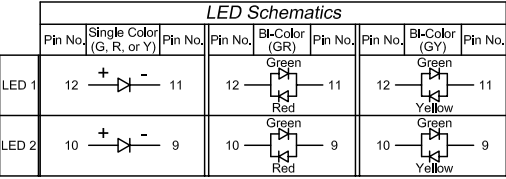
Kycon connectors containing LEDs must NOT be processed using Lead-Free Infra-Red reflow soldering using JEDEC-020C (or similar) profiles. Kycon suggests to process these components using Lead-Free WAVE soldering or Post Lead-Free IR reflow insertion methods only.



Electrical Performance

Category 5 100MHz Bandwidth Performance
 Performance meets near end crosstalk (NEXT) Requirements of -40dB @ 100MHz per EIA/TIA 568A in applications where UL Approved Category 5 cable (GA27-3773-1) is used
 Shielded types offer 20dB shielding from 30MHz to 300MHz

LED Characteristics				
LED Color	Forward DC Current (units: mA)	Forward Voltage (units: V)	Reverse Voltage (units: V)	Power Dissipation (units: mW)
green	25	2.2 Typ. (2.5 Max.)	5	105
red	30	2.0 Typ. (2.5 Max.)	5	105
yellow	30	2.1 Typ. (2.5 Max.)	5	105



Part Number / Ordering Information												
Complete P/N Example:	GWL		G	-	S1	2	8	8	GR	/	Y	50
P/N Breakdown:	Series	Type	dash	Shield Type	No. of Ports	No. of Positions per Port	No. of Contacts per Port	LED 1 Color	slash	LED 2 Color	Contact Area Plating	
Available Options:	GWL = right angle modular jack w/integrated LED's	G = ganged	dash	S1 = fully shielded w/top & side spring shield grounding tabs	2 = 2 ports	8 = 8 contact positions per port	8 = 8 contacts per port	G = green R = red Y = yellow GR = bi-color green/red GY = bi-color green/yellow	slash	G = green R = red Y = yellow GR = bi-color green/red GY = bi-color green/yellow	blank = standard 50 = 50u" option	

Materials and Finish

Housing Material:
 thermoplastic,
 UL 94V-0 rated,
 Color: black

Contact Material:
 phosphor bronze

Contact Plating Options:
 Standard: 0.0001" nickel underplating, selectively plated 0.000015" gold on contact area, tin on soldertails

50 Option: 0.0001" nickel underplating, selectively plated 0.000050" gold on contact area, tin on soldertails

Shield: 0.25 thick copper alloy, Nickel plated

Electrical Characteristics

Current Rating:
 1.5 amps

Voltage Rating:
 125V DC

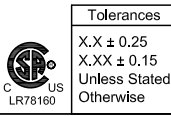
Insulation Resistance:
 500 Megohms min.

Voltage Rating: 150V AC

Contact Resistance:
 20 milliohms max.

Operating Temperature:
 -40°C to +85°C

Durability Rating:
 500 mating cycles min.



REV.	DATE	DESCRIPTION	REV. BY	CHK. BY	DRAWN BY	DATE
A1	7/12/05	New Drawing	R. Aguirre	H. MA	R. Aguirre	05/24/05
A2	10/19/05	ECO #05-058	R. Aguirre	H. MA		
A3	7/20/07	ECO #07-023	A. Frederick	H. MA		
A4	11/2/07	Release Drawing	H. MA	N/A		
A5	3/4/08	ECO#08-030	R. Aguirre	H. MA		
A6	05/13/10	ECO #10-025	S. Vien	H. MA		

GWLGX-S1288x/x
 x = LED color

Right Angle Thru-Hole Ganged Modular Jack w/ LEDs, RoHS Compliant

2 port, fully shielded w/ grounding tabs

