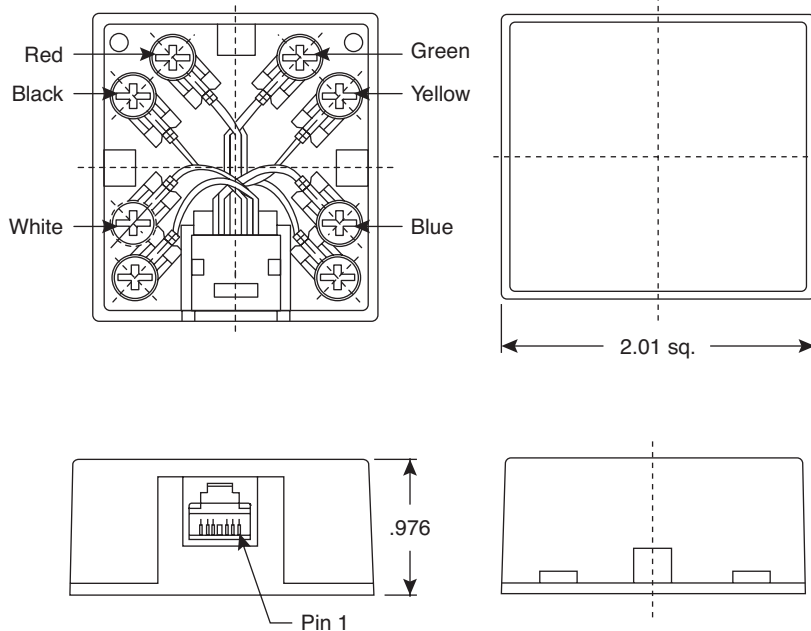
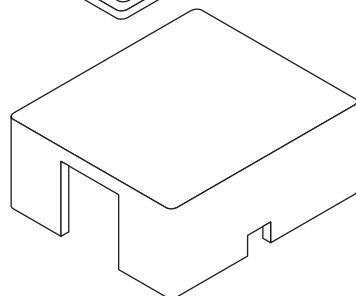
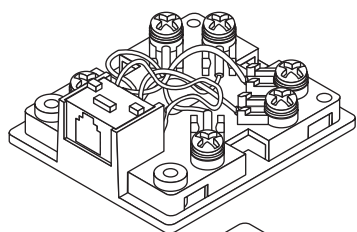


Modular Jack Plate

154-3008



Modular Jack Plate



Dimensions: In.

SPECIFICATIONS	
Type:	Surface Mount 6P/6C
Contact Resistance:	30mΩ max.
Current Rating:	1.5A max.
Withstand Voltage:	500VAC for 1 Minute
Cover:	ABS
Contacts:	6μ Gold over 100μ Nickel Plated Phosphor Bronze
Lead Wires:	26AWG
Y-Terminal:	Copper
Screws:	Nickel Plated, Self-Tapping

Date Last Revised: 11-3-05

Available from Mouser Electronics
1-800-346-6873
www.mouser.com

KC-300653

154-3008