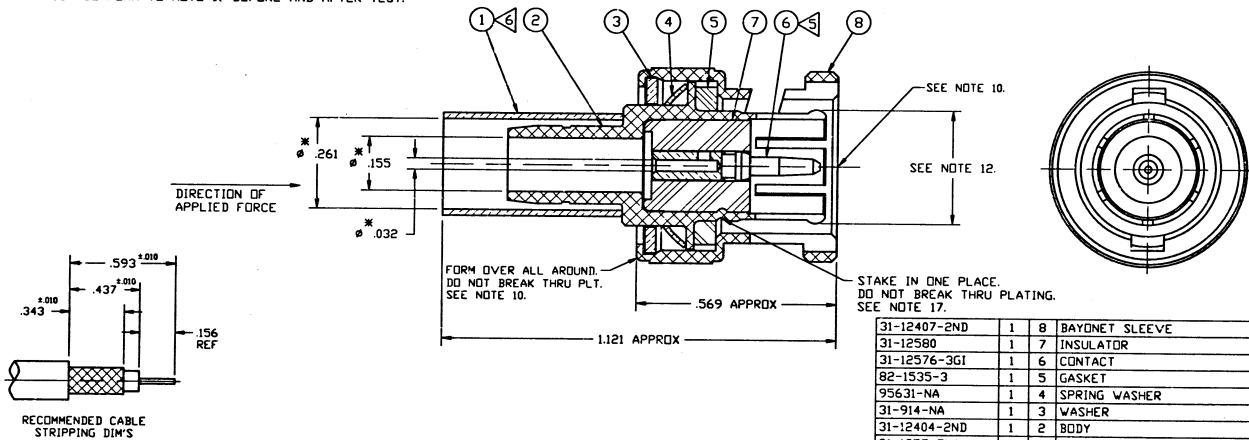


**NOTES:**

1. PLATING MUST CONFORM TO AMPHENOL SPEC. 349-50560. CONTACT IS GOLD PLATED, ALL OTHER METAL PARTS ARE ASTROPLATED (REF).
4. HANDLE ALL ITEMS CAREFULLY TO AVOID DAMAGING THIN SECTIONS.
4. CUSTOMER NOTE: WHEN SOLDERING CONTACT TO CABLE, ROSIN CORE SOFT SOLDER PER QQ-S-571 Sn60 IS RECOMMENDED. WHEN CRIMPING CONTACT TO CABLE, CRIMP WITH AMPHENOL TOOL 227-944 (M22520/5-01) DIE SET 227-1221-13, CAVITY 'B' (M22520/5-13, CLOSURE 'B') OR WITH AMPHENOL COMMERCIAL TOOL CTL-1, (.068 HEX) CRIMP WITH AMPHENOL TOOL 227-944 (M22520/5-01) AND DIE SET 227-1221-13, CAVITY 'A' (M22520/5-13, CLOSURE 'A'), OR WITH AMPHENOL COMMERCIAL TOOL CTL-1, (.255 HEX)
7. ASTERISK (\*) INDICATES CABLE ENTRY DIM'S.
8. PACKAGE THIS CONNECTOR IN BAG 999-342-1.
10. MUST CONFORM TO AMPHENOL SPEC 349-50551, SECTION 301.
11. ITEMS 1 & 6 SHIPPED LOOSE.
12. BEFORE ASSY. FLARE TINES OF BODY TO .324 MIN/.330 MAX. DIA.
13. DIE CAST BODY, MOLDED PROPRIETARY INSULATOR.
14. DO NOT SCALE THIS DRAWING.
15. UNLESS OTHERWISE SPECIFIED, ALL DIMENSIONS ARE AFTER PLATING.
16. USE WITH RG-59 AND BELDEN 8221, 8241, 8241A, 8241F, 8263, 8279A, 9209, 9209A & 9244 CABLES.
17. INSULATOR (ITEM 7) MUST WITHSTAND A TEN (10) LB PUSHOUT FORCE APPLIED FROM THE BACK END OF THE CONNECTOR. INSULATOR LOCATION MUST CONFORM TO NOTE 10 BEFORE AND AFTER TEST.

31-71008-RFX1		REVISIONS			
DRAWING NO.	REV	DESCRIPTION	DATE	ECO	APPR
THIRD ANGLE PROJ.	A	RELEASE TO MFG.	8/25/92	39102	DR
	H	ADD NOTE 17	3/11/97	41821	CPM/DR
	J	ITEM 8 WAS 31-12407-2NV	5/22/97	41983	CPM/DR
	K	ITEM 2 WAS 31-12404-2NV	7/15/97	41860	CPM/DR



PART NUMBER	QTY	ITEM	DESCRIPTION	FINISH
31-12407-2ND	1	8	BAYONET SLEEVE	NOTE 1
31-12580	1	7	INSULATOR	
31-12576-3G1	1	6	CONTACT	NOTE 1
82-1535-3	1	5	GASKET	
95631-NA	1	4	SPRING WASHER	NOTE 1
31-914-NA	1	3	WASHER	NOTE 1
31-12404-2ND	1	2	BODY	NOTE 1
31-1357-7NA	1	1	OUTER FERRULE	NOTE 1

UNLESS OTHERWISE SPECIFIED, DIMENSIONS ARE IN INCHES AND TOLERANCES ARE:  
 2 PLACE DECIMAL ±.015 (0.381 mm)  
 3 PLACE DECIMAL ±.005 (0.127 mm)  
 ANGLES ± 1°

NOTICE - These drawings, specifications, or other data (1) are, and remain the property of Amphenol Corp. (2) must be returned upon request; and (3) are confidential and not to be disclosed to any person other than those to whom they are given by Amphenol Corp. The furnishing of these drawings, specifications, or other data by Amphenol Corp., or to any other person to anyone for any purpose is not to be regarded by implication or otherwise in any manner licensing, granting rights or permitting such holder or any other person to manufacture, use or sell any product, process or design, patented or otherwise, that may in any way be related to or disclosed by said drawings, specifications, or other data.

MATERIAL	DRAWN	DATE	TITLE	<b>Amphenol</b> Amphenol Corporation RF/Microwave Operations Danbury, Conn. U.S.A. 06810 SCALE: 4:1 SHEET OF
REFERENCE	ENGINEER	DATE	<b>BNC CRIMP CRIMP PLUG FOR RG-59, 62 CABLE 75 OHM</b>	
EAR 964772-0	D. RDYCE	8/3/92	APPROVED	CODE ID 74868 DWG SIZE B DRAWING NO. 31-71008-RFX1 REV K
	D. RDYCE	8/3/92		