

NOTES:

1. MATERIALS AND FINISHES:

- BODY - STAINLESS STEEL - GOLD PLATED (.000030" MIN.)
- COUPLING NUT - STAINLESS STEEL - PASSIVATED
- RETAINING RING - BERYLLIUM COPPER
- GASKET - SILICONE RUBBER

2. PHYSICAL:

- OPERATING TEMPERATURE = -65°C to +165°C
- DURABILITY = 500 MATING CYCLES MINIMUM

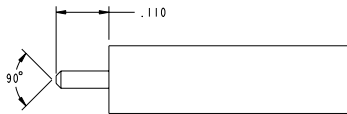
3. ELECTRICAL:

- RETURN LOSS = 25 dB MINIMUM FROM DC TO 6.0 GHz
- PEAK VOLTAGE RATING = 1,000 VAC, 50/60 Hz
- INSULATION RESISTANCE = 5,000 MEGOHMS @ 500 VDC

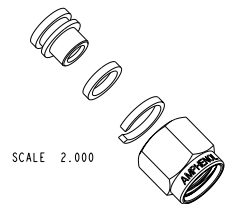
4. PACKAGING:

- PACKAGE 500 PCS. PER BAG
- MARK OR TAG BAG: AMPHENOL
- 901-10071
- DATE CODE (YYYYMM)
- QTY: 500 PCS.

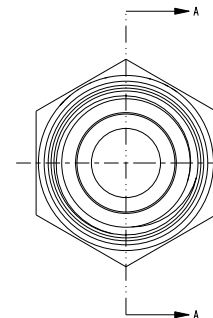
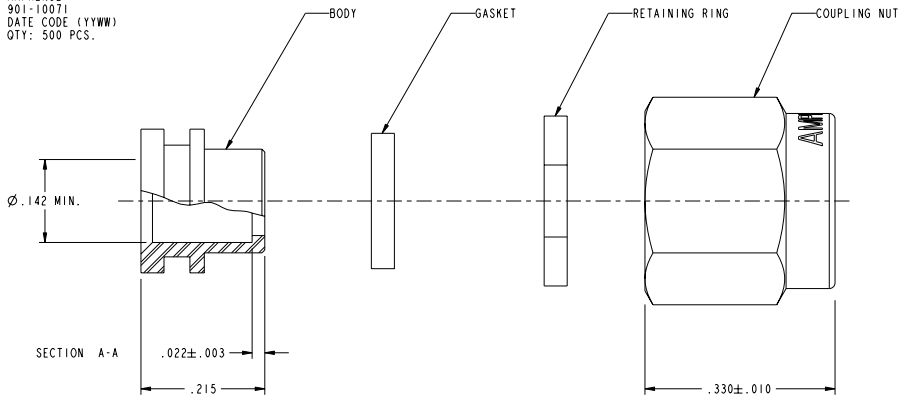
901-10071		REVISIONS			
DRAWING NO.	REV	DESCRIPTION	DATE	ECO	APPR
THIRD ANGLE PROJ.	A	RELEASE TO MFG.	7/31/02	44138	BCG
	B	ADD CABLE STRIPPING DIMS	10/31/02	44261	CPM



RECOMMENDED CABLE STRIPPING DIMENSIONS
SCALE 5.000



SCALE 2.000



CUSTOMER OUTLINE DRAWING
ALL OTHER SHEETS ARE FOR INTERNAL USE ONLY

UNLESS OTHERWISE SPECIFIED, DIMENSIONS ARE IN INCHES AND TOLERANCES ARE: 2 PLACE DECIMAL 3 PLACE DECIMAL ANGLES ±.015 (0.381 mm) ±.005 (0.127 mm) ± 1°	MATERIAL	DRAWN	DATE	TITLE	Amphenol Amphenol Corporation Communication and Network Products Division Danbury, CT U.S.A. 06810		
	NOTICE - These drawings, specifications, or other data (1) are, and remain the property of Amphenol Corp. (2) must be returned upon request; and (3) are confidential and not to be disclosed to any person other than those to whom they are given by Amphenol Corp. The furnishing of these drawings, specifications, or other data by Amphenol Corp., or to any other person for any purpose is not to be regarded by implication or otherwise in any manner licensing, granting rights or permitting such holder or any other person to manufacture, use or sell any product, process or design, patented or otherwise, that may in any way be related to or disclosed by said drawings, specifications, or other data.	REFERENCE 615X-1772-100 EARR 521 GEN# ASSYM35.SMA	B. C. GLEISSNER B. C. GLEISSNER O. BARTHELMES	14-Feb-02 14-Feb-02 7/31/02		SMA PLUG, DIRECT SOLDER FOR Ø.141 SEMI-RIGID or Ø.141 CONFORMABLE CABLE	SCALE: 6.0:1 SHEET 2 OF 2
		CAD FILE		CODE ID	DWG SIZE	DRAWING NO.	REV
		901-10071		74868	B	901-10071	B