

... and specifications are held remain our property and must be returned to us. All specifications and are not to be disclosed to any person other than those to whom they are authorized or other data belonging to us which may be furnished to readers for production be regarded by implication or otherwise as in any manner releasing the holder or any person or company any rights or claims to manufacture, use or sell any patented or may in any way be related thereto.

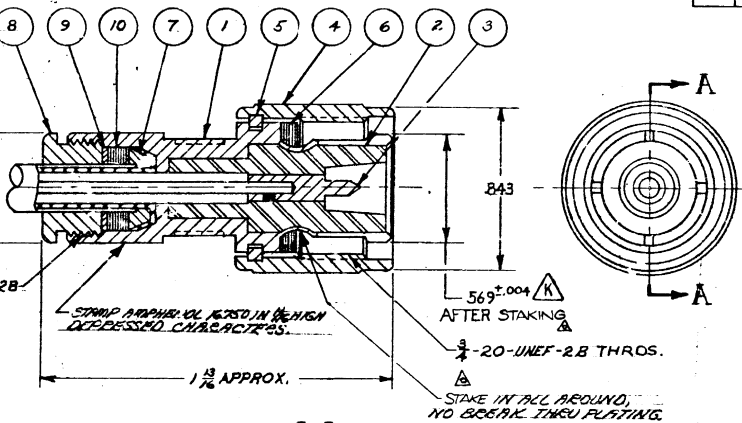
BURRS, BREAK CORNERS AND SHARP EDGES .005 MAXIMUM UNLESS OTHERWISE SPECIFIED.

DO NOT SCALE THIS DRAWING

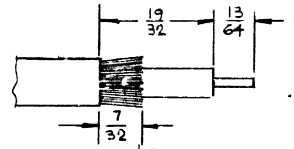
16750
DRAWING NUMBER

REVISIONS

ZONE	SYM.	DESCRIPTION	DATE	ECONO	APPR.
	D	REDRAWN- NO CHANGE	8-14-62	5934	9
	E	DR. ENG. REL. TO PROD.	5-14-63	8587	9
	F	ITEMS 4+5 IPC TO RMPH.	5-17-63	8210	KFD
2B	G	ITEM 6 WAS 8408	1-3-64	9764	RTW
	H	ITEM 7 WAS 2800 & ITEM 8 WAS 2800 & ITEM 9 WAS 2800 & ITEM 10 WAS 2800	2-11-64	9051	AER
	J	ADDED NOTE, UPDATED OVER BALLBOONS, ITEM 6 WAS 82-930, ITEM 5 WAS 2-38-05	7/23/65	12198	S.P.
	K	ADDED.	1-19-66	12893	AR
	L	ITEM 4 WAS- 82-947	4-19-66	13274	AR
	M	REVISED RADIUS NOTES	11/17/66	22593	E.V.H.
	N	ADDED CABLE STRIPPING DIM	6/30/78	24118	RM
	P	CHANGED WORD "ROLL" TO "STAKE"	6/1/83	29464	SES



SECTION A-A



RECOMMENDED STRIPPING DIM

- NOTES:
1. CHARACTERISTICS PER FS-100-11.
 2. Astroplate .00005/.0001 thick per Para. 3.2.1.1 of Amphenol Spec. 349-50060
 3. Astroplate .00017/.00015 thick per Para. 3.2.1.2 of Amphenol Spec. 349-50060

1	10	29106	CLAMP GASKET	
1	9	29105	CLAMP WASHER	SEE NOTE 3
1	8	29102	CLAMP NUT	SEE NOTE 3
1	7	29103	BRAID CLAMP	SEE NOTE 3
1	6	82-1535-21	GASKET	
1	5	82-1138-2	SPRING RING	
1	4	82-2304-1	COUPLING NUT	SEE NOTE 3
1	3	16753	MALE CONTACT	FS-100-6
1	2	16752	INSULATOR (TEFLON)	
1	1	16751	BODY	SEE NOTE 2

REQ	DITEM	PART NO.	DESCRIPTION	FINISH
LIST OF MATERIAL				
AMPHENOL RF				
			A DIVISION OF AMPHENOL-BORG ELECTRONICS CORP. GENERAL OFFICES DANBURY, CONN. PLANTS AT CHICAGO 38, ILL. WOODSIDE 77, N.Y. DANBURY, CONN.	
TITLE		HX PLUG FOR RG-55A58/U CABLE		
DRAWN BY		DATE		
CHECKED		DATE		
ENGINEER		DATE		
APPROVED		DATE		
REFERENCE DRAWING NO.		CODE IDENTIFICATION		
		DRAWING SIZE		DRAWING NO.
		B		16750
SCALE		SHEET OF		
2-1				

OFFICIAL ENG. REL
8581
5-17-63

NEXT ASSY USED ON APPLICATION

UNLESS OTHERWISE SPECIFIED DIMENSIONS ARE IN INCHES
TOLERANCE ON FRACTIONS DECIMALS ANGLES
± 1/64 ± .005 ± 1/2°
MATERIAL //
SPECIFICATION //
FINISH, SEE "LIST OF MATERIAL"

DRAWN BY 970AL DATE 8-14-62
CHECKED JTB DATE 8-18-62
ENGINEER J.A. MALONEY DATE 8/14/62
APPROVED JTB DATE 8/14/62

REFERENCE DRAWING NO. CODE IDENTIFICATION DRAWING SIZE DRAWING NO. B 16750

ISSUE P