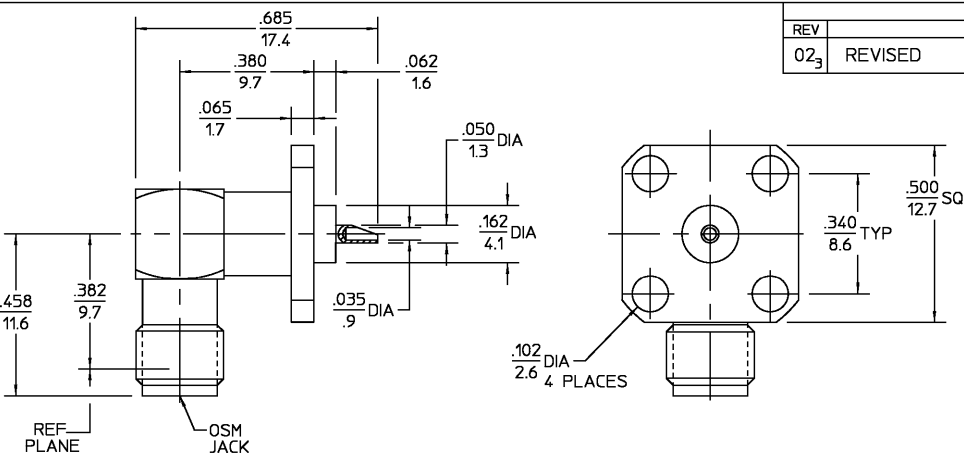


REVISIONS			
REV	DESCRIPTION	DATE	APPROVED
02 ₃	REVISED	6/3/94	BB



ELECTRICAL	MECHANICAL	ENVIRONMENTAL
Nominal Impedance (Ohms) 50	Interface Dimensions MIL-STD-348A, Fig. 310.2	Temperature Rating -65° C to +165° C
Frequency Range (GHz) DC to 12.4	Recommended Mating Torque 7 - 10 in - lbs	Vibration MIL-STD-202, Method 204, Condition D.
Volt Rating (VRMS MAX) Sea Level 335	Mating Characteristics: Insertion (MAX Lbs) 3.0	Shock MIL-STD-202, Method 213, Condition I.
VSWR N/A	Withdrawal (MIN Oz) 1.0	Thermal Shock MIL-STD-202, Method 107, Condition B.
Insertion Loss (dB MAX) N/A	Force to Engage and Disengage (in-Lbs MAX) 2.0	Except High Temp +125° C
RF Leakage (dB MIN) -(90-f(GHz))	Center Contact Captivation Axial (Lbs) 6.0	Moisture Resistance MIL-STD-202, Method 106
Corona, 70,000 Ft (VRMS MIN) 250	Radial (in-Oz) N/A	Corrosion - MIL-STD-202, Method 101, Condition B, 5% salt spray
Dielectric Withstanding Voltage (VRMS MIN) Sea Level 1,000	Cable Retention Axial Force (Lbs) N/A	
Contact Resistance (Milliohms MAX) Center Contact 2.0	Torque (in-Oz) N/A	
Outer Contact 2.0	Weight (Grams) 4.7	
Cable to Housing N/A		
RF High Potential Sea Level (VRMS MIN) 5 MHz 670		
IR (Megohms MIN) 10,000		

COMPONENT	MATERIAL	FINISH								
HOUSING CAP	STAINLESS STEEL PER ASTM-A484 AND ASTM-A582, TYPE 303	PASSIVATE PER ASTM-A380								
DIELECTRIC	TFE FLUOROCARBON PER ASTM-D-1457	N/A								
CONTACT	BERYLLIUM COPPER PER ASTM B 196, ALLOY C17300, CONDITION H	GOLD PLATE PER MIL-G-45204 OVER NICKEL PLATE PER QQ-N-290								
<table border="1"> <tr> <td>UNLESS OTHERWISE SPECIFIED DIMENSIONS ARE IN INCHES</td> <td>DATE 10-18-68</td> <td rowspan="3"> AMP Incorporated 140 Fourth Avenue Waltham, MA 02451-7599 </td> </tr> <tr> <td>TOLEANCE ON</td> <td>10-18-68</td> </tr> <tr> <td>FRAC. DEC. ANGLES ± 1/64 ± .005 ± .1°</td> <td>10-22-68</td> </tr> </table>			UNLESS OTHERWISE SPECIFIED DIMENSIONS ARE IN INCHES	DATE 10-18-68	AMP Incorporated 140 Fourth Avenue Waltham, MA 02451-7599	TOLEANCE ON	10-18-68	FRAC. DEC. ANGLES ± 1/64 ± .005 ± .1°	10-22-68	
UNLESS OTHERWISE SPECIFIED DIMENSIONS ARE IN INCHES	DATE 10-18-68	AMP Incorporated 140 Fourth Avenue Waltham, MA 02451-7599								
TOLEANCE ON	10-18-68									
FRAC. DEC. ANGLES ± 1/64 ± .005 ± .1°	10-22-68									
USE ASSY PROCEDURE NO. AP. N/A		TITLE OSM 4 HOLE FLANGE MOUNT RIGHT ANGLE JACK SOLDER POT TERMINAL <table border="1"> <tr> <td>SIZE B</td> <td>CODE IDENT NO. 26805</td> <td>2054-0000-02</td> <td>REV 02₃</td> </tr> <tr> <td>SCALE 4 : 1</td> <td></td> <td></td> <td>SHEET 1 OF 1</td> </tr> </table>	SIZE B	CODE IDENT NO. 26805	2054-0000-02	REV 02 ₃	SCALE 4 : 1			SHEET 1 OF 1
SIZE B	CODE IDENT NO. 26805	2054-0000-02	REV 02 ₃							
SCALE 4 : 1			SHEET 1 OF 1							

CUSTOMER DRAWING AMP PART # 1052974-1 SHEET 1 OF 1 REV A