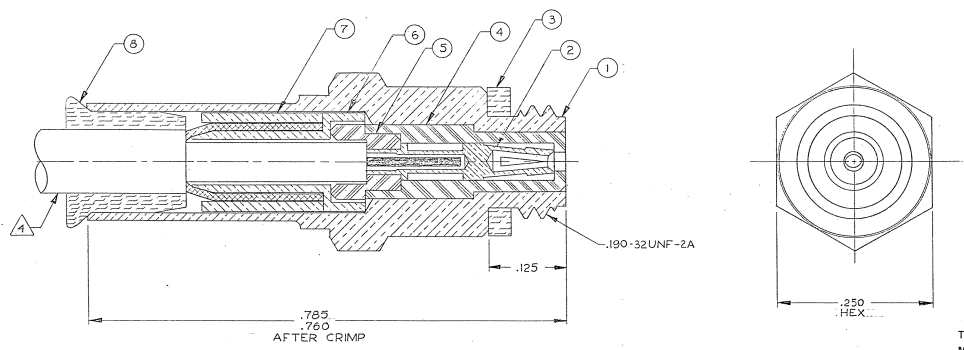


REVISIONS					
ZONE	LTR	ECN	DESCRIPTION	DATE	APPROVED
E	25090		REV. 8 REDRAWN, ORIGINAL RELEASE 2-17-64 BY B.T. & J.C.P. CA	7/24/80	<i>[Signature]</i>
F	138251		UPDATE REV. LETTER	7/20/99	<i>[Signature]</i>



Tyco Dwg 3-1532005-4
Micro P/N 131-0136-0001

- NOTES: UNLESS OTHERWISE SPECIFIED
- THIS CONNECTOR MATES WITH ALL 50 OHM GOLDEN CRIMP, CRIMP SILVER AND S-50 PLUGS AS LISTED IN MALCO CATALOG.
 - SEE RF-ASMB-8 FOR ASSEMBLY INSTRUCTIONS. SPECIAL TOOLS REQUIRED:
CONTACT CRIMP: 010-0184-0000 AND LOCATOR 001-0104-0000 ALTERNATE TOOL 010-0065-0000 (NO LOCATOR REQUIRED)
HOUSING CRIMP: 010-0082-0000
- ALL METAL PARTS ARE GOLD PLATED PER MIL-G-45204, TYPE II, GRADE C, CLASS I.
- CABLE ACCEPTANCE DIMENSIONS: JACKET DIAMETER: .110 MAX, DIELECTRIC DIAMETER: .057-.070, INNER CONDUCTOR DIAMETER: 1.009-.020

QTY REQD	CODE IDENT	PART OR IDENTIFYING NO.	DESCRIPTION	MATERIAL	ITEM
1		003-0861-0001	SEALING SLEEVE	SILICONE RUBBER PER ZZ-R-765	8
1		003-0938-0002	MIDDLE CRIMP SLEEVE	LEADED COPPER	7
1		003-0939-0002	INNER CRIMP SLEEVE	BRASS PER QQ-B-626	6
1		003-0937-0001	CABLE INSULATOR	TEFLON PER L-P-403	5
1		003-0816-0001	HOUSING INSULATOR	TEFLON PER L-P-403	4
1		003-0268-0001	GASKET	SILICONE RUBBER PER ZZ-R-765	3
1		003-0819-0002	SOCKET CONTACT	BERYLLIUM COPPER PER QQ-C-530	2
1		003-0942-0002	HOUSING JACK	BRASS PER QQ-B-626	1

UNLESS OTHERWISE SPECIFIED DIMENSIONS ARE IN INCHES TOLERANCES ARE:
FRACTIONS: .XX ± ANGLES: ± .010

MATERIAL		NOTED
FINISH		NOTED
NEXT ASSY	USED ON	

CONTRACT NO. **MALCO**
A MICRODOT COMPANY, INC.
309 PASADENA AVE., SO. PASADENA, CALIF. 91030

APPROVALS: DRAWN *C.B.* 3-21-80, CHECKED *[Signature]* 7-23-80, PR. ENG. *[Signature]* 7-23-80, APPD.

JACK, GOLDEN CRIMP, 50 OHM

PROD. CODE 941, CODE CDM

SIZE CODE IDENT NO. DRAWING NO.
C 98278 131-0136-0001

These drawings and specifications are the property of Malco Company, Inc. and are intended to be produced in color, or with as the basis for the reproduction of drawings and specifications without written permission of Malco, Inc.