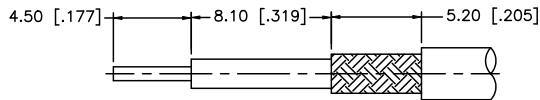
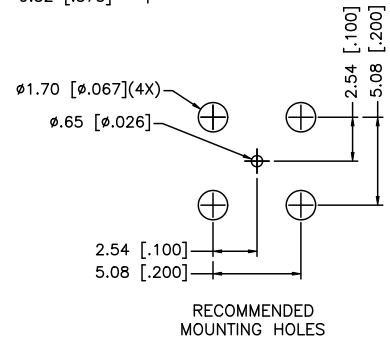
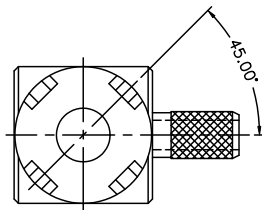
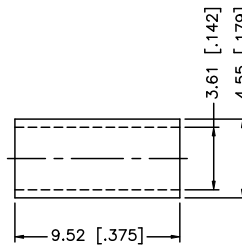
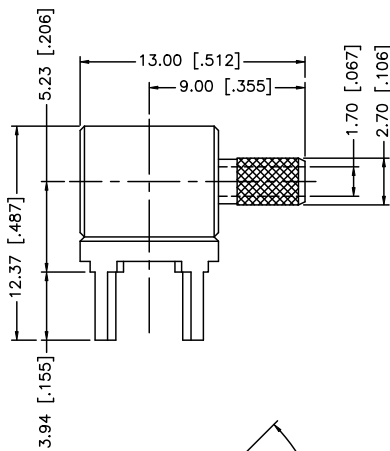
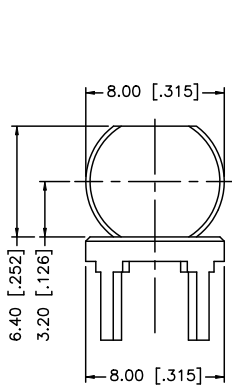


REV.	DATE	DESCRIPTION
NC	05/01/04	INITIAL RELEASE
A	04/02/08	REVISE CABLE DESCRIPTION



RECOMMENDED  
CABLE STRIPPING DIM'S



NOTE:

1. CRIMPED FERRULE HEC CRIMP SIZE .151"

8					<p>UNLESS OTHERWISE SPECIFIED DIMENSIONS ARE IN MILLIMETERS. DIMENSIONS IN [ ] ARE IN INCHES AND FOR CUSTOMER REFERENCE ONLY.</p> <p>UNLESS OTHERWISE SPECIFIED TOLERANCES FOR MILLIMETERS ARE:  0.5 - 8mm ± 0.20mm  8 - 30mm ± 0.40mm  30 - 120mm ± 0.50mm</p> <p>UNLESS OTHERWISE SPECIFIED TOLERANCES FOR INCHES ARE:  .020 - .315 = ± 0.007"  .315 - 1.180 = ± 0.015"  1.180 - 4.724 = ± 0.020"</p> <p>DO NOT SCALE DRAWING</p>	APPROVALS	DATE	<h1 style="color: blue; text-align: center;">Amphenol Connex</h1> <p style="text-align: center;">R/A PCB CABLE TERMINAL (FOR RG-316/U DOUBLE BRAID)</p>			
7				DRAWN		G.R.S.	04/02/08				
6				CHECKED							
5				ISSUED							
4				SHEET		1 OF 1					
3											
2	FERRULE	COPPER	GOLD	1							
1	BODY	BRASS	GOLD	1							
	DESCRIPTION	MATERIAL	FINISH	QTY	CAD FILE	C:/142/142269.DWG	DWG. NO.	142269.DWG	REV. A	SIZE A	SCALE NA