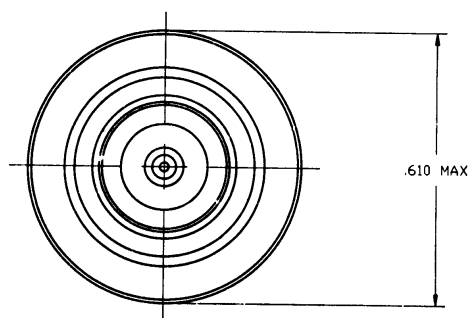
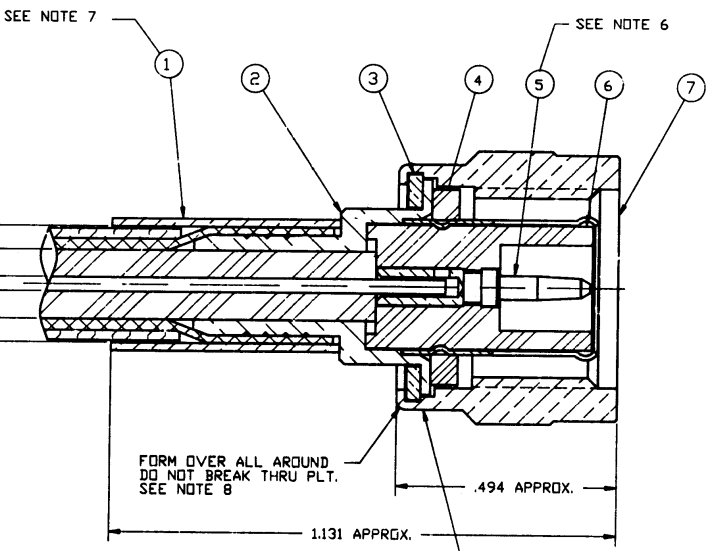


CJ NOT SCALE THIS DRAWING

REVISIONS				
SYM	DESCRIPTION	DATE	E.C.O. NO.	APPR.
	OFFICIAL ENG. RELEASE TO MFG.			
B	REDESIGNED & REDRAWN	10/7/88	35895	DET
C	ITEM 5 WAS DASH 2;		36713	GS/



69350-1001
DRAWING NUMBER ISSUE
C

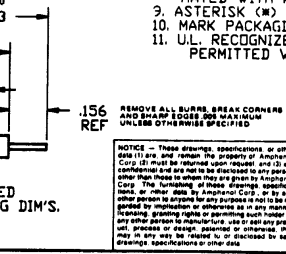
NOTES:

- GOLD PLATE PER SPEC 349-50228 PARA 'A'.
- ASTROPLATE PER PARA 3.2.1.1 OF AMPHENOL SPEC 349-50060.
- ASTROPLATE PER PARA 3.2.1.2 OF AMPHENOL SPEC 349-50060.
- HEAT SHRINK TUBING SUPPLIED ON REQUEST.
- HANDLE ALL ITEMS CAREFULLY TO AVOID DAMAGING THIN SECTIONS.
- CUSTOMER NOTE: WHEN SOLDERING CONTACT TO CABLE, ROSIN CORE SOFT SOLDER PER QQ-S-571 Sn 60 IS RECOMMENDED. WHEN CRIMPING CONTACT TO CABLE, CRIMP WITH AMPHENOL TOOL 227-944 (M22520/5-01) AND DIE SET 227-1221-13, CAVITY 'B' (M22520/5-13, CLOSURE 'B').
- CRIMP WITH AMPHENOL TOOL 227-944 (M22520/5-01) AND DIE SET 227-1221-13, CAVITY 'A' (M22520/5-13 CLOSURE 'A').
- ITEM 7 SHALL WITHSTAND A PULL OF 100 LBS WHEN MATED WITH A RIGIDLY HELD JACK.
- ASTERISK (*) INDICATES CABLE ENTRY DIM'S.
- MARK PACKAGING BAG "RJ 5A/500V"
- U.L. RECOGNIZED ITEM - NO CHANGES ARE PERMITTED WHICH AFFECT CATALOG SPECIFICATIONS.

PART NO.	QTY	UOM	DESCRIPTION	CODE	FINISH
68180-1	1		HEAT SHRINK TUBING (NOT SHOWN)		NOTE 4
31-10684-1	1		COUPLING NUT		NOTE 2
31-10059	1		INSULATOR		
31-10060-1	1		CONTACT		NOTE 1
B2-1535-3	1		GASKET		
31-914	1		WASHER		NOTE 3
31-12003-2	1		BODY S/A		NOTE 2
31-1357-7	1		OUTER FERRULE		NOTE 2

H:\DEPT611\TNC\000\ASSY\69350\1001

LIST OF MATERIAL



MATERIAL	USED ON

DRAWN BY TERRI ALBERA	DATE 9-28-88
CHECKED D.TARRANT	DATE 9-28-88
QUALITY ASSURANCE	DATE
DATE 10/25/88	

TITLE
TNC PLUG
QUICK CRIMP
RG59 TYPE WITH AWG20
CENTER CONDUCTOR

Amphenol Corporation
RF/Microwave Operations
Danbury, Conn. U.S.A.

UNLESS OTHERWISE SPECIFIED DIMENSIONS ARE IN INCHES, TOLERANCES NOT OTHERWISE SPECIFIED ARE:
3 PLACE DECIMAL .010 (0.254 mm)
2 PLACE DECIMAL .005 (0.127 mm)
ANGLES ± 1°

REFERENCE DRAWING NO.
EAR 980290

SCALE 6:1 SHEET OF 1
DRAWING NO. 74868
DRAWING DATE 10/7/88
DRAWING ISSUE C