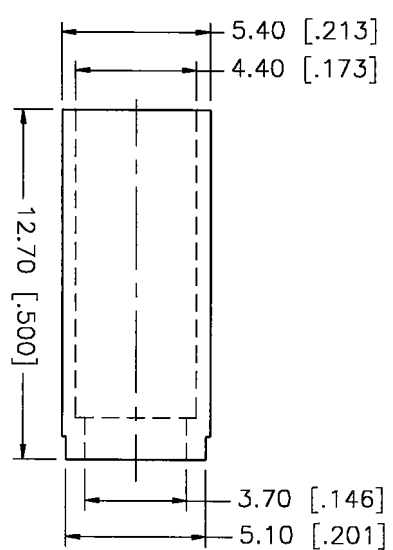
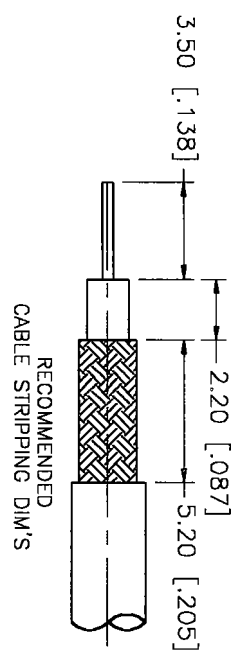
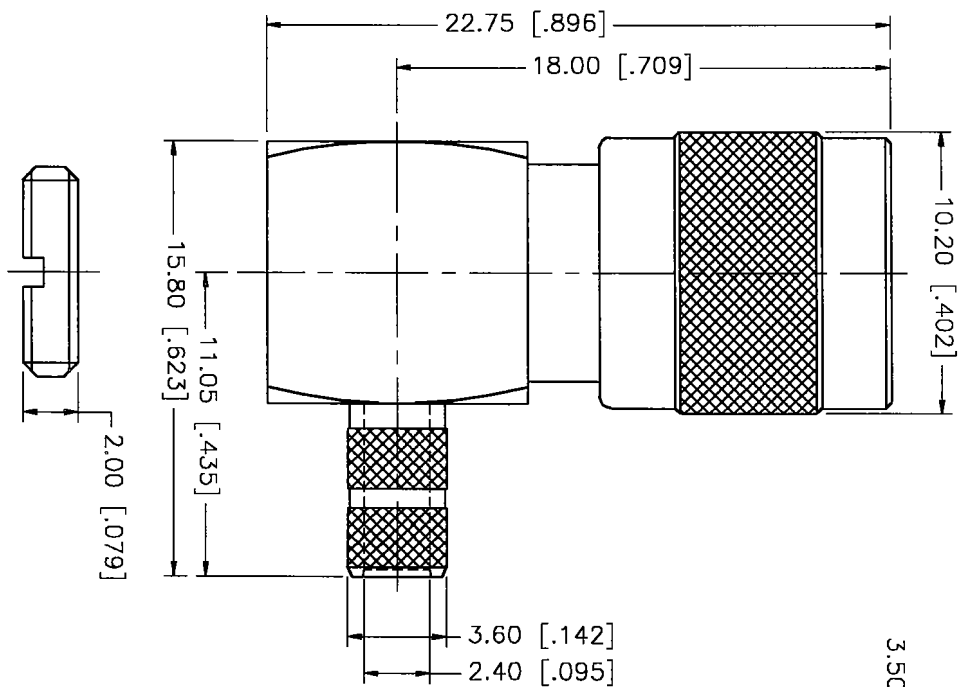


REV.	DATE	DESCRIPTION
NC	07/05/00	INITIAL RELEASE



CRIMP NOTES:  
 1) CRIMP FERRULE  
 HEX CRIMP SIZE .187"

DESCRIPTION	MATERIAL	FINISH	UNLESS OTHERWISE SPECIFIED DIMENSIONS ARE IN MILLIMETERS FOR CUSTOMER REFERENCE ONLY	APPROVALS	DATE	TITLE	SCALE	PART NO.	SHEET
1 SHELL	BRASS	NICKEL	UNLESS OTHERWISE SPECIFIED DIMENSIONS ARE IN MILLIMETERS FOR CUSTOMER REFERENCE ONLY  UNLESS OTHERWISE SPECIFIED TOLERANCES FOR MILLIMETERS ARE: 0.5-6 = ± 0.2 6-30 = ± 0.4 30-120 = ± 0.6 120-315 = ± 1 315-1000 = ± 1.6 1000-2000 = ± 2.4	DRAWN	07/05/00	SMB R/A SNAP LOCK CRIMP PLUG (FOR AT&T 735A CABLE)	A	99001	1 OF 1
2 BODY	BRASS	GOLD		CHECKED					
3 RETAINER RING	BER. COPPER	NATURAL		ISSUED					
4 INSULATOR	TEFLON	NATURAL							
5 CONTACT PIN	BER. COPPER	GOLD							
6 FERRULE	COPPER	GOLD							
7									
8				DO NOT SCALE DRAWING					



SMB R/A SNAP LOCK CRIMP PLUG (FOR AT&T 735A CABLE)

142290.DWG