

Figure 1

1. INTRODUCTION

SMA Hermetically-Sealed Panel Feedthrough Jack Receptacles 1053159-1, 1053181-1, 1053182-1, 1053226-1, 1053227-1, 1053254-1, 1061372-1, and 1089139-1 are designed to be mounted onto a panel using the following tools:

TOOL DESCRIPTION	PART NUMBER CROSS-REFERENCE	
	TYCO ELECTRONICS	M/A-COM
Step Reamer	1055284-1	2098-0442-54
.250-36, UNS-2B Bottoming Tap	—	2098-5618-54
Torque Tool	1055251-1	2098-0248-54
3/8-in. Open Wrench	—	—

■ Commercially available

NOTE Unless otherwise specified, dimensions in this instruction sheet are in metric units [with U.S. customary units in brackets].

Reasons for reissue of this instruction sheet are provided in Section 5, REVISION SUMMARY.

2. DESCRIPTION

The jack receptacle consists of a jack and metal gasket. See Figure 1.

3. ASSEMBLY PROCEDURE

DANGER Follow safety precautions included with the tools used for assembly.

1. Refer to Figure 2, and drill a hole in the panel to the diameter shown. Using the step reamer, ream the hole to the depth shown. Using the bottoming tap, tap the thread to the depth shown.

2. While holding the collet of the torque tool, turn the handle *clockwise* until it stops. Thread the jack into the tool until it bottoms inside the tool. Hand-tighten the jack. Refer to Figure 3.

NOTE The torque tool is preset between 2.60 and 3.05 Nm [23 and 27 in.-lb].

Recommended Panel Cutout

Note: Dimensions are in inches over millimeters.

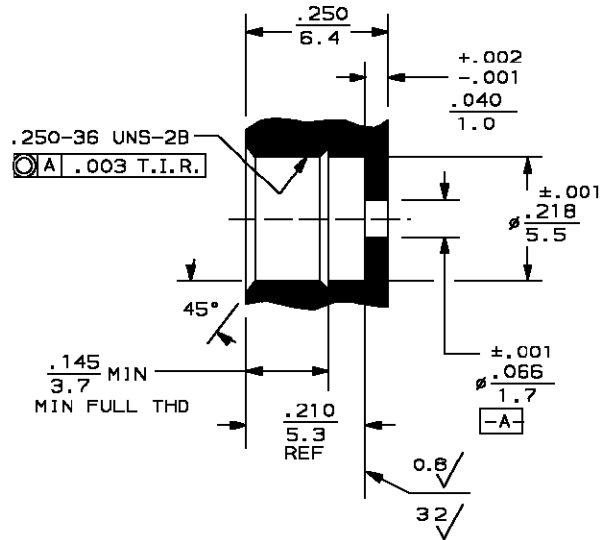
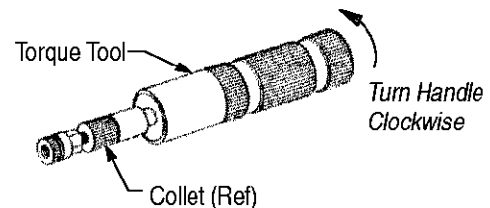


Figure 2

Detail A



Detail B

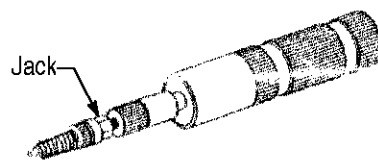


Figure 3

3. Install the metal gasket onto the jack. See Figure 4.

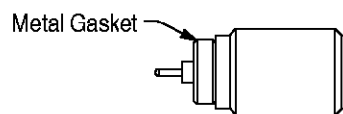


Figure 4

4. Thread the jack into the connector housing by turning the handle of the torque tool *clockwise* until the handle releases. See Figure 5, Detail A.

5. While holding the collet of the torque tool with the open wrench, turn the handle *counter-clockwise*, and remove the jack assembly from the torque tool. See Figure 5, Detail B.

6. Install the jack assembly onto the panel.

4. REPLACEMENT AND REPAIR

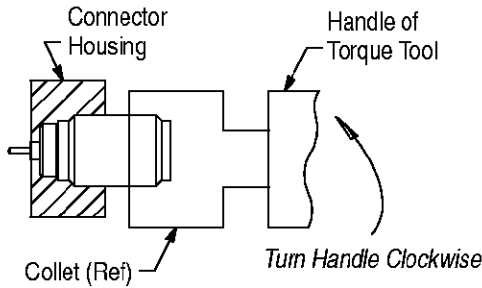
Discard and replace any defective or damaged jack receptacles or metal gaskets.

5. REVISION SUMMARY

Revisions to this instruction sheet per EC 0990-1532-02 include:

- Updated document to corporate requirements
- Removed obsolete jack receptacles
- Added Section 4

Detail A



Detail B

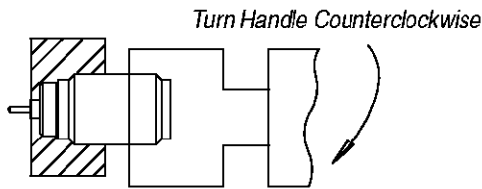


Figure 5