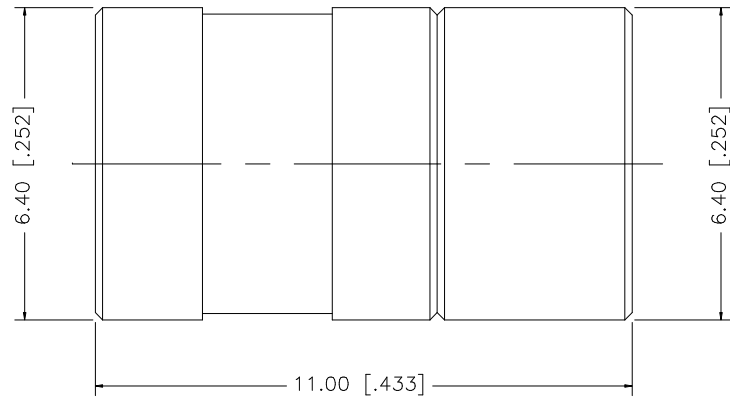


REV.	DATE	DESCRIPTION
NC	06/13/05	INITIAL RELEASE



8				<small>UNLESS OTHERWISE SPECIFIED DIMENSIONS ARE IN MILLIMETERS. DIMENSIONS IN [] ARE IN INCHES AND FOR CUSTOMER REFERENCE ONLY.</small> <small>UNLESS OTHERWISE SPECIFIED TOLERANCES FOR MILLIMETERS ARE:</small> 0.5 - 8mm ± 0.20mm 8 - 30mm ± 0.40mm 30 - 120mm ± 0.50mm <small>UNLESS OTHERWISE SPECIFIED TOLERANCES FOR INCHES ARE:</small> .020 - .315 = ± 0.007" .315 - 1.180 = ± 0.015" 1.180 - 4.724 = ± 0.020"	APPROVALS	DATE	<h1 style="color: blue;">Amphenol Connex</h1>		
7					DRAWN	G.R.S.		06/13/05	
6					CHECKED				
5	COVER	BRASS	GOLD		1				PART DESCRIPTION
4	RESISTOR	100R	2 WATT - 1%		1				SMB TERMINATOR PLUG
3	CONTACT PIN	BER. COPPER	GOLD		1				PART NO.
2	INSULATOR	TEFLON	NATURAL		1	SHEET		1 OF 1	142334
1	BODY	BRASS	GOLD		1	CAD FILE		C:/142/142334.DWG	DWG. NO. 142334.DWG
	DESCRIPTION	MATERIAL	FINISH	QTY	DO NOT SCALE DRAWING		REV. NC	SIZE A	SCALE NA