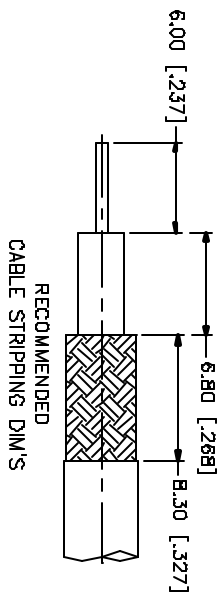
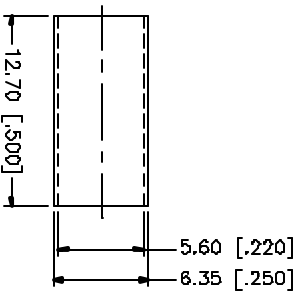
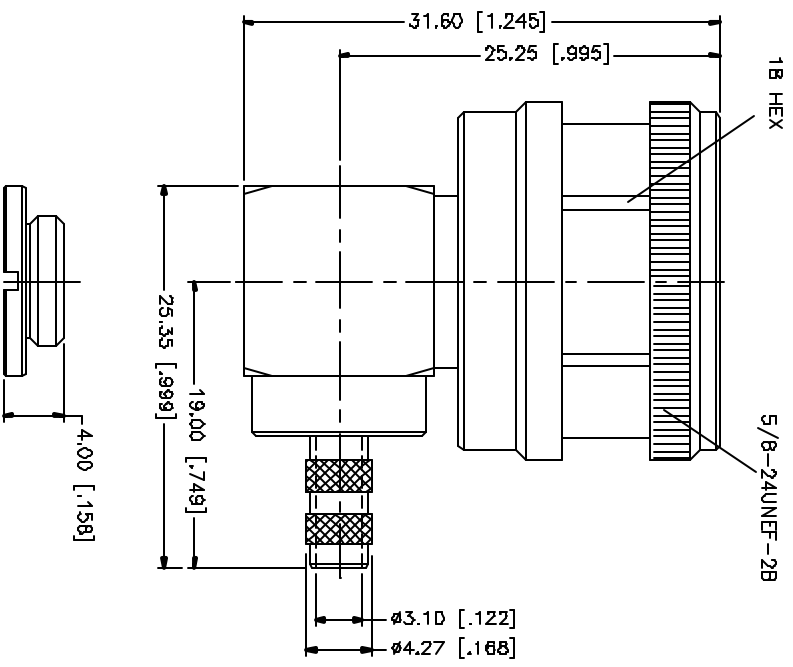


REV	DATE	DESCRIPTION
NC	07/25/04	INITIAL RELEASE



NOTE:
 1. CRIMPED FERRULE
 HEX: CRIMP SIZE .213"
 2. CONTACT PIN TO SOLDER.

QTY	FINISH	MATERIAL	DESCRIPTION
1	NEXCOTE	BRASS	INSULATOR BODY
1	NEXCOTE	BRASS	CONTACT PIN
1	NEXCOTE	BRASS	CLAMP NUT
1	NEXCOTE	COPPER	FERRULE

APPROVALS	DATE
G.R.S.	07/25/04

Amphenol Connex

N R/A CRIMP PLUG
 (FOR RG-55/U, 142A/U, 223/U, 400/U CABLE)

172178-10

DWG. NO: 172178-10.DWG REV. NC SIZE A SCALE NA