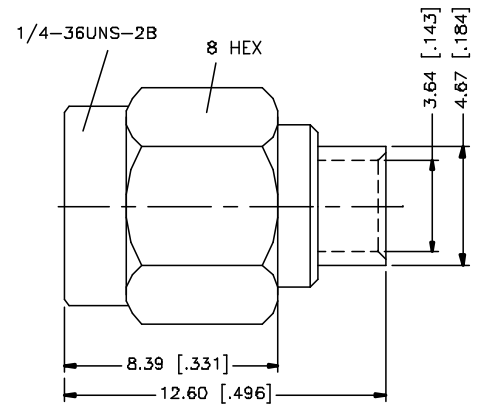
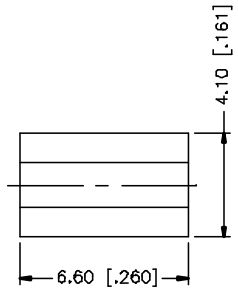
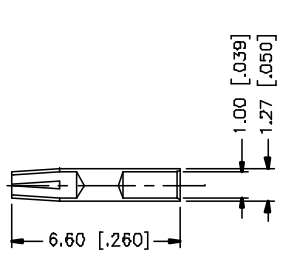
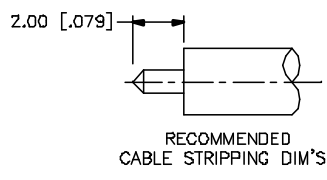


| REV. | DATE | DESCRIPTION |
|------|----------|------------------------------------|
| A | 03/06/05 | UPDATE DRAWING FORMAT AND PART NO. |



| | | | | | | | | | |
|---|----------------|----------|---------|---------|---|-----------|----------|--|--|
| 8 | | | | | <small>UNLESS OTHERWISE SPECIFIED DIMENSIONS ARE IN MILLIMETERS. DIMENSIONS IN [] ARE IN INCHES AND FOR CUSTOMER REFERENCE ONLY.</small> <small>UNLESS OTHERWISE SPECIFIED TOLERANCES FOR MILLIMETERS ARE:</small> 0.5 - 8mm ± 0.20mm 8 - 30mm ± 0.40mm 30 - 120mm ± 0.50mm <small>UNLESS OTHERWISE SPECIFIED TOLERANCES FOR INCHES ARE:</small> .020 - .315 = ± 0.007" .315 - 1.180 = ± 0.015" 1.180 - 4.724 = ± 0.020" | APPROVALS | DATE | <h1 style="color: blue; margin: 0;">Amphenol Connex</h1> | |
| 7 | | | | DRAWN | | G.R.S. | 03/06/05 | | <small>PART DESCRIPTION</small> SMA STRAIGHT PLUG – REV. POLARITY (FOR .141" SEMI RIGID CABLE) |
| 6 | | | | CHECKED | | | | | |
| 5 | | | | ISSUED | | | | | |
| 4 | | | | | SHEET | 1 OF 1 | | <small>PART NO.</small> 132102RP | |
| 3 | CONTACT PIN | BRASS | GOLD | 1 | <small>CAD FILE</small> C:/132/132102RP.DWG | | | | <small>DWG. NO.</small> 132102RP.DWG |
| 2 | INSULATOR BODY | TEFLON | NATURAL | 1 | | | | <small>REV.</small> A | |
| 1 | | BRASS | GOLD | 1 | | | | <small>SIZE</small> A | |
| | DESCRIPTION | MATERIAL | FINISH | QTY | <small>DO NOT SCALE DRAWING</small> | | | <small>SCALE</small> NA | |