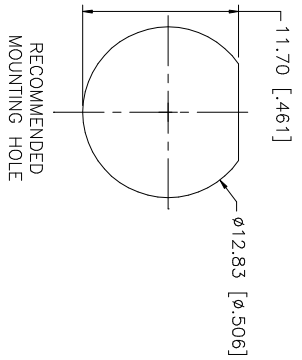
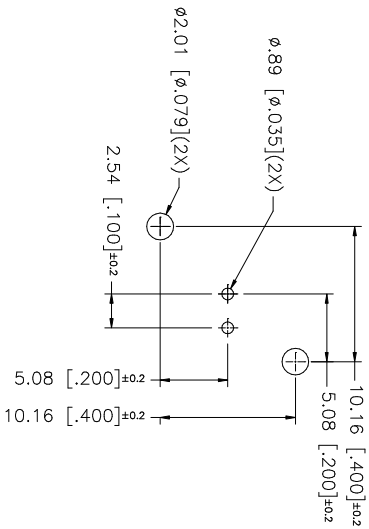
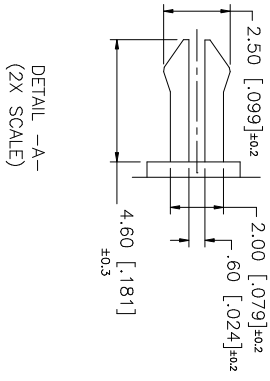
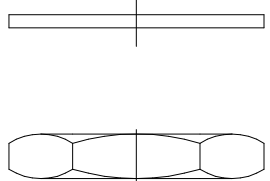
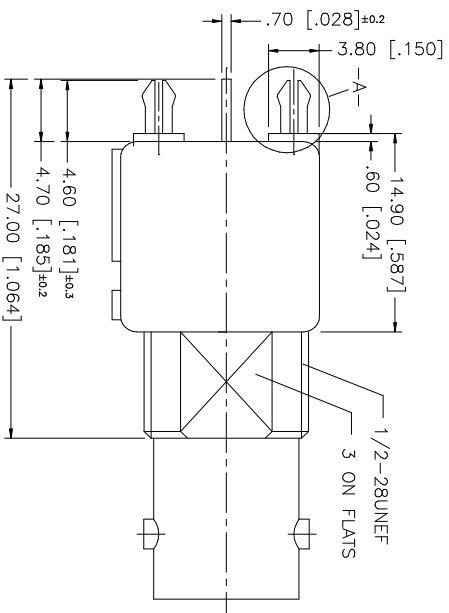
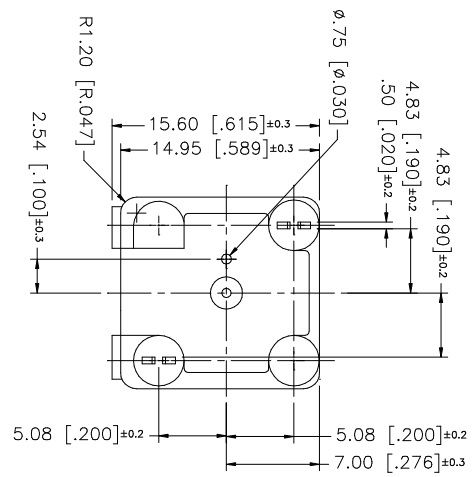


REV.	DATE	DESCRIPTION
B	01/10/04	UPDATE DRAWING FORMAT / MODIFY MOUNTING POSTS



NOTE:  
1. MAX. PANEL THICKNESS = 5mm

8	HEX NUT	BRASS	NICKEL									
7	LOCK WASHER	BRASS	NICKEL									
6	MOUNTING POST	BRASS	TIN PLATING									
5	POST	COPPER	TIN PLATING									
4	CONTACT PIN	PHOS. BRONZE	GOLD									
3	INSULATOR	POLY PRO.	NATURAL									
2	BODY	ZINC DIE CAST	NICKEL									
1	DESCRIPTION	MATERIAL	FINISH	QTY	DO NOT SCALE DRAWING	CAD FILE	DWG. NO.	REV.	SIZE	SCALE		
						C:/112/112495.DWG	112495.DWG	B	A	NA		
		<p>UNLESS OTHERWISE SPECIFIED DIMENSIONS ARE IN MILLIMETERS; DIMENSIONS IN [ ] ARE IN INCHES AND FOR CUSTOMER REFERENCE ONLY. TOLERANCES FOR MILLIMETERS ARE:</p> <p>0.5 - 8mm ± 0.20mm 8 - 30mm ± 0.40mm 30 - 120mm ± 0.50mm</p> <p>UNLESS OTHERWISE SPECIFIED TOLERANCES FOR INCHES ARE:</p> <p>.020 - .315 = ± 0.007" .315 - 1.180 = ± 0.015" 1.180 - 4.124 = ± 0.020"</p>		<p>APPROVALS</p> <p>DATE</p> <p>01/10/04</p>		<p>PART DESCRIPTION</p> <p>BNC STRAIGHT PC MOUNT RECEPT. JACK</p> <p>PART NO. 112495</p>		<p><b>Amphenol Connex</b></p>				