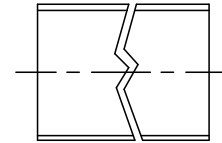
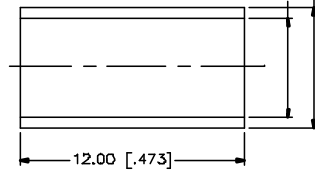
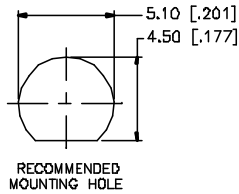
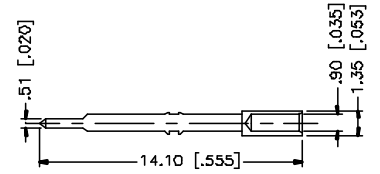
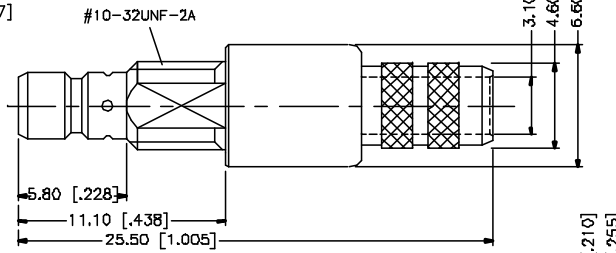
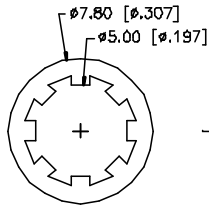
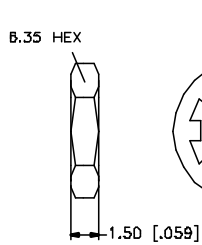
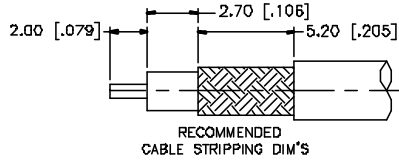


REV.	DATE	DESCRIPTION
NC	04/03/05	INITIAL RELEASE



DESCRIPTION	MATERIAL	FINISH	QTY	UNLESS OTHERWISE SPECIFIED DIMENSIONS ARE IN MILLIMETERS DIMENSIONS IN [ ] ARE IN INCHES AND FOR OUTGOING REFERENCE ONLY.	APPROVALS	DATE	<b>Amphenol Connex</b>
8					DRAWN	G.R.S.	
7	HEAT SHRINK TUBE		1		CHECKED		PART DESCRIPTION <b>SMB BULKHEAD CRIMP JACK (FOR RG-58/U, 58B/U CABLE)</b>
6	HEX NUT	BRASS	GOLD	1	ISSUED		
5	LOCK WASHER	BRASS	GOLD	1	SHEET	1 OF 1	PART NO. <b>142331</b>
4	FERRULE	COPPER	GOLD	1	CAD FILE	C:/142/142331.DWG	
3	CONTACT PIN	BRASS	GOLD	1			DWG. NO. 142331.DWG REV. NC SIZE A SCALE NA
2	INSULATOR	TEFLON	NATURAL	1			
1	BODY	BRASS	GOLD	1			
				UNLESS OTHERWISE SPECIFIED DIMENSIONS ARE IN MILLIMETERS DIMENSIONS IN [ ] ARE IN INCHES AND FOR OUTGOING REFERENCE ONLY. UNLESS OTHERWISE SPECIFIED TOLERANCES FOR MILLIMETERS ARE: 0.5 - 8mm ± 0.20mm 8 - 30mm ± 0.40mm 30 - 120mm ± 0.50mm UNLESS OTHERWISE SPECIFIED TOLERANCES FOR INCHES ARE: .020 - .315 = ± 0.007" .315 - 1.180 = ± 0.015" 1.180 - 4.724 = ± 0.020"			
				DO NOT SCALE DRAWING			