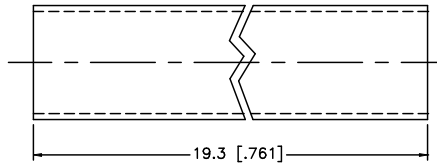
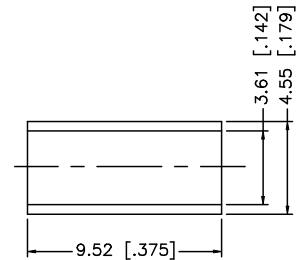
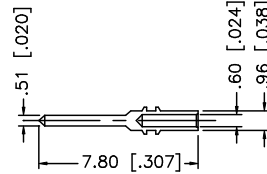
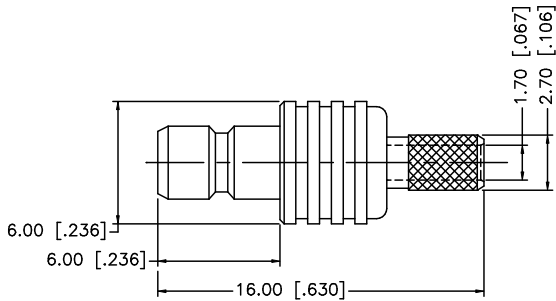
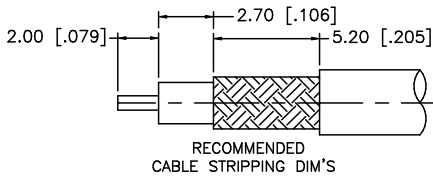


REV.	DATE	DESCRIPTION
NC	04/15/99	INITIAL RELEASE
A	07/21/05	UPDATE DRAWING FORMAT
B	05/08/07	REVISE BARREL, FERRULE DIMENSIONS



NOTE:

1. CRIMPED FERRULE HEX CRIMP SIZE .128"
2. CRIMPED CONTACT PIN SQ. CRIMP SIZE 0.7mm

DESCRIPTION	MATERIAL	FINISH	QTY	UNLESS OTHERWISE SPECIFIED DIMENSIONS ARE IN MILLIMETERS. DIMENSIONS IN [] ARE IN INCHES AND FOR CUSTOMER REFERENCE ONLY.	APPROVALS	DATE	Amphenol Connex
8					DRAWN	G.R.S.	
7					CHECKED		PART DESCRIPTION
6					ISSUED		SMB CRIMP JACK (FOR 316U/D CABLE)
5	HEAT SHRINK TUBE		1	UNLESS OTHERWISE SPECIFIED TOLERANCES FOR MILLIMETERS ARE: 0.5 - 8mm ± 0.20mm 8 - 30mm ± 0.40mm 30 - 120mm ± 0.50mm	SHEET	1 OF 1	PART NO.
4	FERRULE	COPPER	1	UNLESS OTHERWISE SPECIFIED TOLERANCES FOR INCHES ARE: .020 - .315 = ± 0.007" .315 - 1.180 = ± 0.015" 1.180 - 4.724 = ± 0.020"	CAD FILE	C:/142/142190.DWG	142190
3	CONTACT PIN	BRASS	1	DO NOT SCALE DRAWING	DWG. NO.	142190.DWG	REV. B
2	INSULATOR	TEFLON	1				SIZE A
1	BODY	BRASS	1				SCALE NA