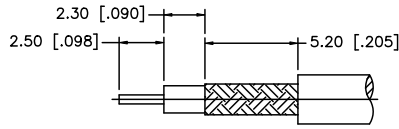
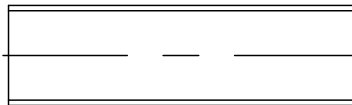
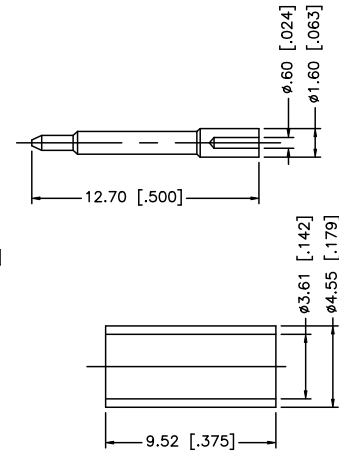
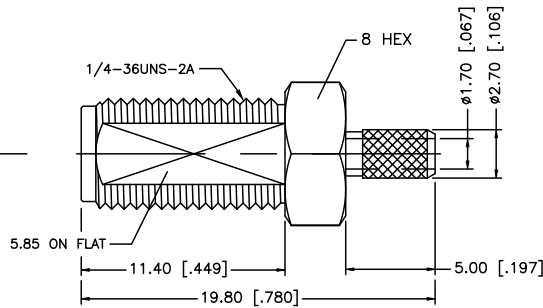
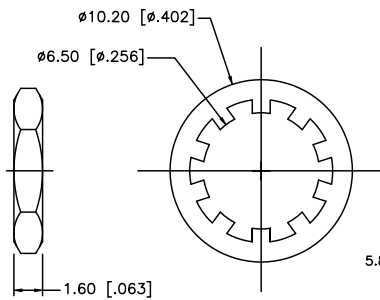


RECOMMENDED MOUNTING HOLES



RECOMMENDED CABLE STRIPPING DIM'S

REV.	DATE	ECR NO.	DESCRIPTION
A	04/27/99	-	MODIFY FERRULE/ ADD NOTES 1 AND 2
B	09/29/04	-	MODIFY FERRULE AND CRIMP NOTES
C	09/17/08	-	ADD FLAT TO BODY/ REVISE FERRULE DIMENSIONS/ ADD NOTE 3 REVISE CABLE DESCRIPTION TO 316/U DB CABLE



- NOTE:
1. CRIMPED FERRULE HEX CRIMP SIZE .151" [3.83]
  2. CONTACT PIN TO SOLDER.
  3. MAX. PANEL THICKNESS OF 3.20 [1.26"]

				UNLESS OTHERWISE SPECIFIED DIMENSIONS ARE IN MILLIMETERS; DIMENSIONS IN ( ) ARE IN INCHES AND FOR CUSTOMER REFERENCE ONLY.	APPROVALS	DATE	<h1 style="text-align: center;">Amphenol Connex</h1>			
8										<b>PART DESCRIPTION</b> SMA REVERSE POLARITY BULKHEAD CRIMP JACK (FOR 316/U DOUBLE BRAID CABLE)
7	HEAT SHRINK TUBING	BLK	A/R		DRAWN	GRS	09/17/08	<b>PART NO.</b> 132176RP		
6	FERRULE	COPPER	GOLD	1	CHECKED					
5	HEX NUT	BRASS	GOLD	1	ISSUED			<b>REV.</b> NC <b>SIZE</b> A <b>SCALE</b> NA		
4	LOCK WASHER	BRASS	GOLD	1	SHEET	1 OF 1				
3	CONTACT PIN	BRASS	GOLD	1	CAD FILE	C:/132/132176RP.DWG				
2	INSULATOR	PTFE	NATURAL	1						
1	BODY	BRASS	GOLD	1						

UNLESS OTHERWISE SPECIFIED DIMENSIONS ARE IN MILLIMETERS; DIMENSIONS IN ( ) ARE IN INCHES AND FOR CUSTOMER REFERENCE ONLY.

UNLESS OTHERWISE SPECIFIED TOLERANCES FOR MILLIMETERS ARE:  
 0.5 - 8mm ± 0.20mm  
 8 - 30mm ± 0.40mm  
 30 - 120mm ± 0.50mm

UNLESS OTHERWISE SPECIFIED TOLERANCES FOR INCHES ARE:  
 .020 - .315 = ± 0.007"  
 .315 - 1.180 = ± 0.015"  
 1.180 - 4.724 = ± 0.020"

# Amphenol Connex

**PART DESCRIPTION**  
 SMA REVERSE POLARITY BULKHEAD CRIMP JACK (FOR 316/U DOUBLE BRAID CABLE)

**PART NO.**  
 132176RP

**DWG. NO.** 132176RP.DWG **REV.** NC **SIZE** A **SCALE** NA

**DO NOT SCALE DRAWING**

**CAD FILE**  
 C:/132/132176RP.DWG