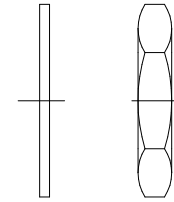
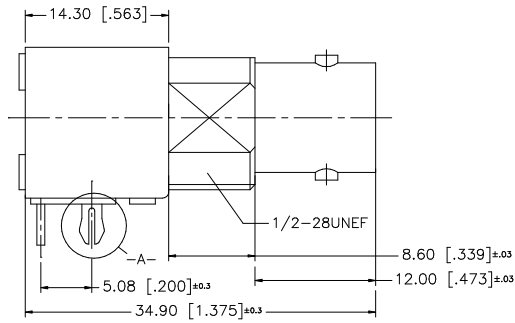
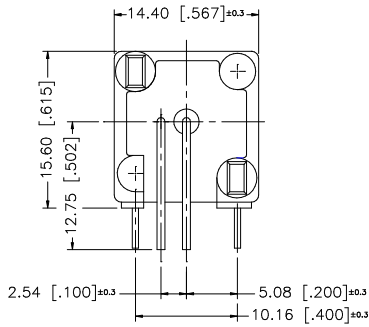
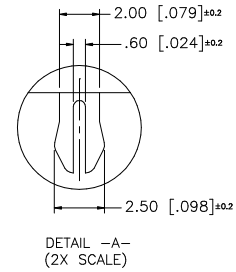
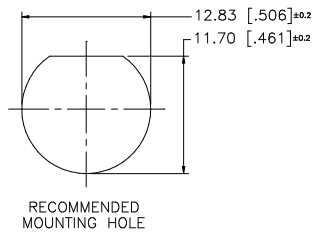
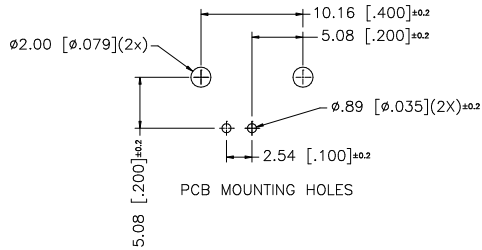


REV.	DATE	DESCRIPTION
A	06/05/03	UPDATE DRAWING FORMAT
B	11/19/03	MODIFY MOUNTING POST
C	10/30/06	UPDATE DRAWING SPECS.



NOTE:
1. MAX. PANEL THICKNESS = 5mm

DESCRIPTION	MATERIAL	FINISH	QTY	UNLESS OTHERWISE SPECIFIED DIMENSIONS ARE IN MILLIMETERS. DIMENSIONS IN [] ARE IN INCHES AND FOR CUSTOMER REFERENCE ONLY.	APPROVALS	DATE	<h1 style="color: blue;">Amphenol Connex</h1>	
8				<small>UNLESS OTHERWISE SPECIFIED TOLERANCES FOR MILLIMETERS ARE: 0.5 - 8mm ± 0.20mm 8 - 30mm ± 0.40mm 30 - 120mm ± 0.50mm</small> <small>UNLESS OTHERWISE SPECIFIED TOLERANCES FOR INCHES ARE: .020 - .315 = ± 0.007" .315 - 1.180 = ± 0.015" 1.180 - 4.724 = ± 0.020"</small>	DRAWN	G.R.S.		10/30/06
7					CHECKED			
6					ISSUED			
5	HEX NUT	BRASS	NICKEL		1	SHEET		1 OF 1
4	LOCK WASHER	S50C	NICKEL		1			
3	CONTACT PIN	PHOS. BRONZE	GOLD	1			PART DESCRIPTION	
2	INSULATOR	P.P.	NATURAL	1			BNC R/A PC MOUNT RECEPT. JACK	
1	BODY	ZINC DIECAST	NICKEL	1			PART NO.	
							112503	
				DO NOT SCALE DRAWING	CAD FILE	C:/112/112503.DWG	DWG. NO.	
							112503.DWG	
							REV. C	
							SIZE A	
							SCALE NA	