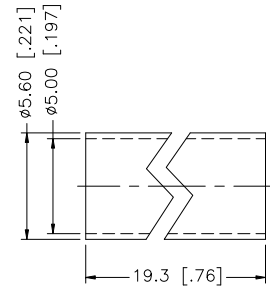
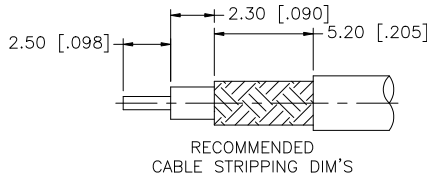
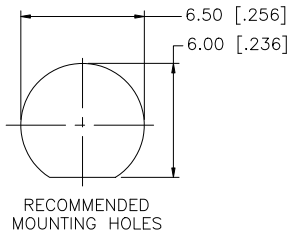
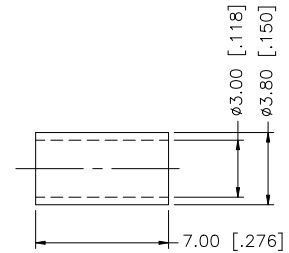
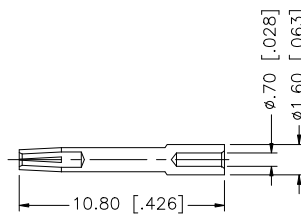
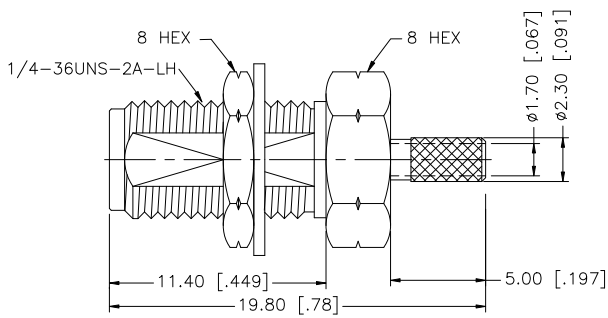


REV.	DATE	DESCRIPTION
NC	02/03/99	INITIAL RELEASE
A	10/10/07	UPDATE DRAWING FORMAT



NOTE:

1. CRIMPED FERRULE HEX CRIMP SIZE .128"
2. CONTACT PIN TO SOLDER.

				APPROVALS	DATE	Amphenol Connex					
8										PART DESCRIPTION SMA BULKHEAD CRIMP JACK – REVERSE THREAD (FOR RG-174/U, 188/U, 316/U CABLE)	
7	HEAT SHRINK TUBE		1	DRAWN	G.R.S.	10/10/07	PART NO. 132119RT				
6	FERRULE	COPPER	GOLD	1	CHECKED						DWG. NO. 132119RT.DWG
5	HEX NUT	BRASS	GOLD	1	ISSUED		REV. A SIZE A SCALE NA				
4	LOCK WASHER	BRASS	GOLD	1	SHEET	1 OF 1					DO NOT SCALE DRAWING
3	CONTACT PIN	BER. COPPER	GOLD	1	CAD FILE	C:/132/132119RT.DWG					
2	INSULATOR	TEFLON	NATURAL	1							
1	BODY	BRASS	GOLD	1							
DESCRIPTION MATERIAL FINISH QTY											

UNLESS OTHERWISE SPECIFIED DIMENSIONS ARE IN MILLIMETERS. DIMENSIONS IN [] ARE IN INCHES AND FOR CUSTOMER REFERENCE ONLY.

UNLESS OTHERWISE SPECIFIED TOLERANCES FOR MILLIMETERS ARE:
0.5 – 8mm ± 0.20mm
8 – 30mm ± 0.40mm
30 – 120mm ± 0.50mm

UNLESS OTHERWISE SPECIFIED TOLERANCES FOR INCHES ARE:
.020 – .315 = ± 0.007"
.315 – 1.180 = ± 0.015"
1.180 – 4.724 = ± 0.020"