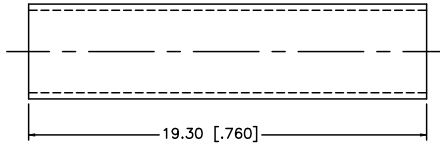
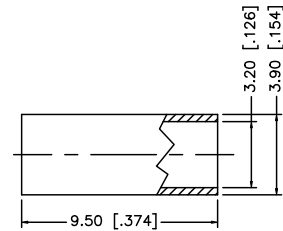
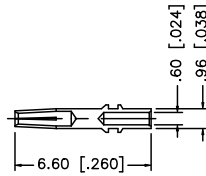
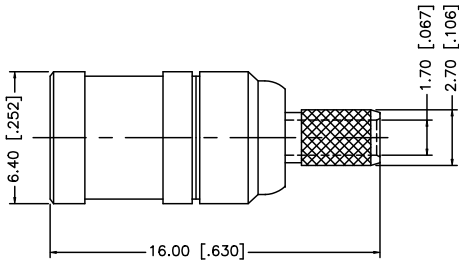
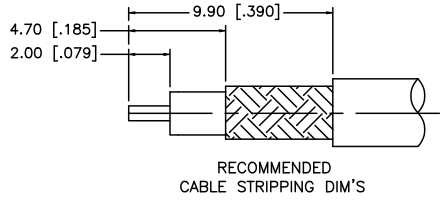


REV.	DATE	ECR NO.	DESCRIPTION
A	01/26/00	-	UPDATE DRAWING FORMAT
B	05/02/07	-	REVISE BARREL AND FERRULE DIMENSIONS
C	01/12/09	-	REVISE CABLE CALL OUT IN PART DESCRIPTION.



NOTE:

1. CRIMPED FERRULE HEX CRIMP SIZE .128" [3.25]
2. CONTACT PIN TO SOLDER.

				APPROVALS	DATE	<h1>Amphenol Connex</h1>															
8				DRAWN	G.R.S.					01/12/09	<p style="text-align: center;">MINI SMB CRIMP PLUG – 75 ohm (FOR RG-179/187 CABLE)</p> <p style="text-align: center;">PART NO. 142178-75</p>										
7				CHECKED		<p>UNLESS OTHERWISE SPECIFIED DIMENSIONS ARE IN MILLIMETERS. DIMENSIONS IN [] ARE IN INCHES AND FOR CUSTOMER REFERENCE ONLY.</p> <p>UNLESS OTHERWISE SPECIFIED TOLERANCES FOR MILLIMETERS ARE: 0.5 – 8mm ± 0.20mm 8 – 30mm ± 0.40mm 30 – 120mm ± 0.50mm</p> <p>UNLESS OTHERWISE SPECIFIED TOLERANCES FOR INCHES ARE: .020 – .315 = ± 0.007" .315 – 1.180 = ± 0.015" 1.180 – 4.724 = ± 0.020"</p> <p>DO NOT SCALE DRAWING</p>															
6				ISSUED						<p>SHEET 1 OF 1</p> <p>CAD FILE C:/142/142178-75.DWG</p>											
5	HEAT SHRINK TUBE	BLACK	1												<p>DWG. NO. 142178-75.DWG</p> <p>REV. C SIZE A SCALE NA</p>						
4	FERRULE	COPPER	NICKEL																		
3	CONTACT PIN	BER. COPPER	GOLD																		
2	INSULATOR	PTFE	NATURAL																		
1	BODY	BRASS	NICKEL																		
DESCRIPTION MATERIAL FINISH QTY																					