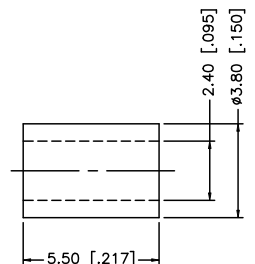
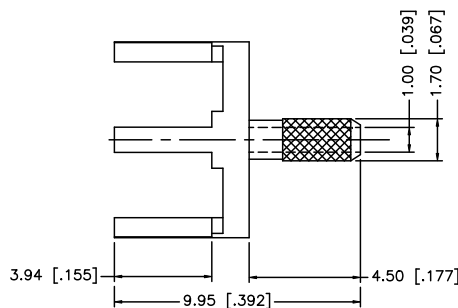
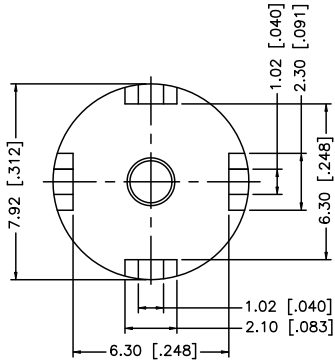
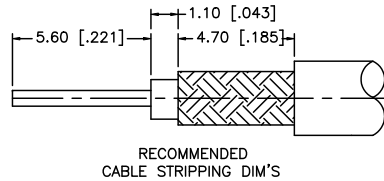
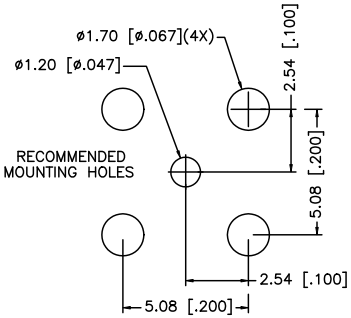


REV.	DATE	DESCRIPTION
NC	02/23/00	INITIAL RELEASE
A	03/24/08	UPDATE DRAWING FORMAT



NOTES:  
1. CRIMPED FERRULE HEX CRIMP SIZE .128"

8					<small>UNLESS OTHERWISE SPECIFIED DIMENSIONS ARE IN MILLIMETERS DIMENSIONS IN [ ] ARE IN INCHES AND FOR CUSTOMER REFERENCE ONLY.</small> <small>UNLESS OTHERWISE SPECIFIED TOLERANCES FOR MILLIMETERS ARE:</small> 0.5 - 8mm ± 0.20mm 8 - 50mm ± 0.40mm 30 - 120mm ± 0.50mm <small>UNLESS OTHERWISE SPECIFIED TOLERANCES FOR INCHES ARE:</small> .020 - .315 = ± 0.007" .315 - 1.180 = ± 0.015" 1.180 - 4.724 = ± 0.020"	APPROVALS	DATE	<h1 style="color: blue;">Amphenol Connex</h1>	
7				DRAWN		G.R.S.	03/24/08		<b>PART DESCRIPTION</b> PCB MOUNT CABLE TERMINATION (FOR RG-178B/U, 196A/U CABLE)
6				CHECKED					
5				ISSUED					
4								<b>PART NO.</b> 142266	
3				SHEET	1 OF 1				
2	FERRULE	COPPER	GOLD	1					
1	BODY	BRASS	GOLD	1				<b>DWG. NO.</b> 142266.DWG	
	DESCRIPTION	MATERIAL	FINISH	QTY	DO NOT SCALE DRAWING	CAD FILE	C:/142/142266.DWG		<b>REV.</b> A <b>SIZE</b> A <b>SCALE</b> NA