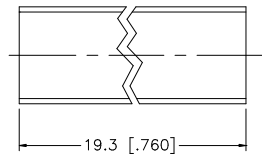
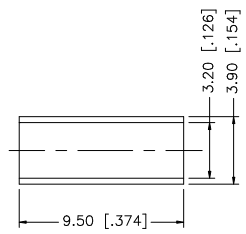
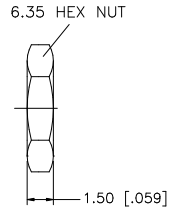
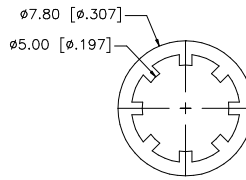
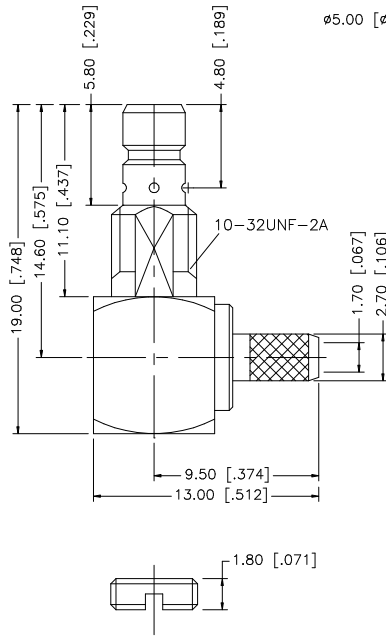
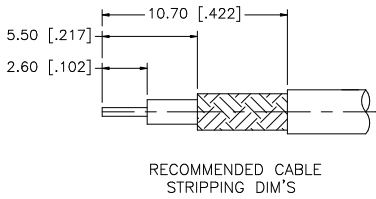
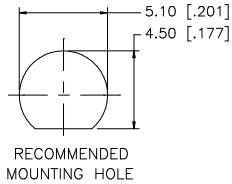


REV.	DATE	DESCRIPTION
NC	04/29/99	INITIAL RELEASE
A	05/08/07	REVISE BARREL, FERRULE DIMS, UPDATE DRAWING FORMAT



- NOTE:
1. CRIMPED FERRULE HEX CRIMP SIZE .128"
 2. CONTACT PIN TO SOLDER.

QTY	DESCRIPTION	MATERIAL	FINISH	QTY	DO NOT SCALE DRAWING	APPROVALS	DATE	<h1 style="color: blue;">Amphenol Connex</h1>	
8	COVER	BRASS	GOLD	1	<small>UNLESS OTHERWISE SPECIFIED DIMENSIONS ARE IN MILLIMETERS. DIMENSIONS IN [] ARE IN INCHES AND FOR CUSTOMER REFERENCE ONLY.</small> <small>UNLESS OTHERWISE SPECIFIED TOLERANCES FOR MILLIMETERS ARE:</small> 0.5 - 8mm ± 0.20mm 8 - 30mm ± 0.40mm 30 - 120mm ± 0.50mm <small>UNLESS OTHERWISE SPECIFIED TOLERANCES FOR INCHES ARE:</small> .020 - .315 = ± 0.007" .315 - 1.180 = ± 0.015" 1.180 - 4.724 = ± 0.020"	DRAWN	G.R.S.		05/08/07
7	FERRULE	COPPER	GOLD	1		CHECKED			
6	HEX NUT	BRASS	GOLD	1		ISSUED			
5	LOCK WASHER	BRASS	GOLD	1		SHEET	1 OF 1		
4	CONTACT PIN	BRASS	GOLD	1		PART NO. 142233			
3	INSULATOR	TEFLON	NATURAL	1		DWG. NO. 142233.DWG			
2	BODY	BRASS	GOLD	1		REV. A SIZE A SCALE NA			
1						CAD FILE C:/142/142233.DWG			