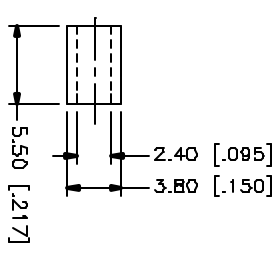
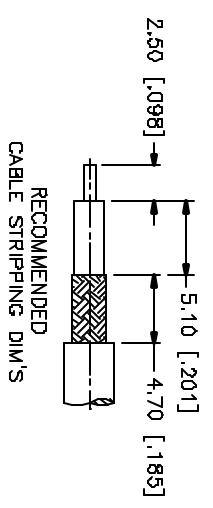
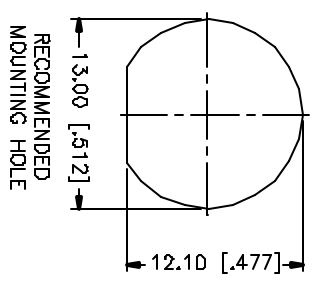
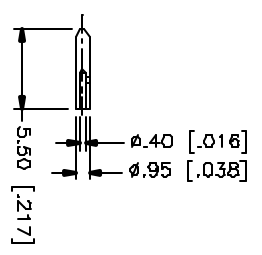
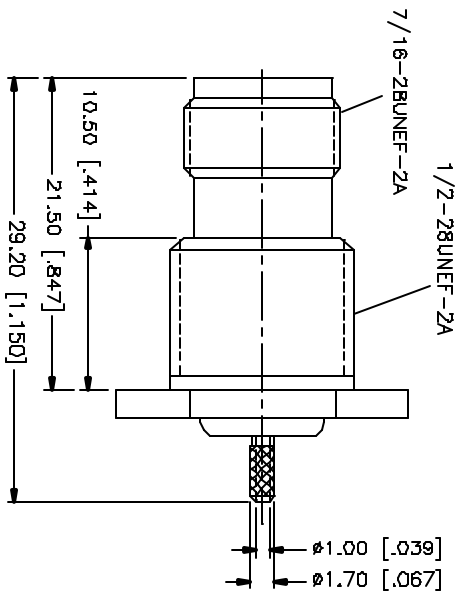
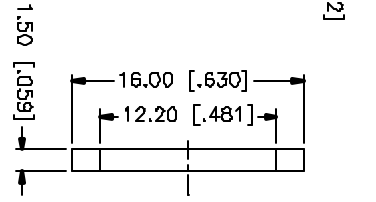
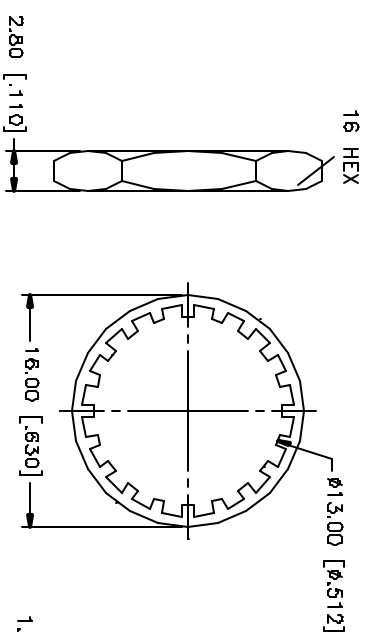


REV.	DATE	DESCRIPTION
A	06/29/04	UPDATE DRAWING FORMAT



CRIMP NOTES:

1. CRIMPED FERRULE
HEX CRIMP SIZE .128"
2. CRIMPED CONTACT PIN
SQ. CRIMP SIZE .7mm

QTY	FINISH	MATERIAL	DESCRIPTION
1	NICKEL	COPPER	FERRULE
1	NICKEL	BRASS	HEX NUT
1	NICKEL	BRASS	LOCK WASHER
1	RED	RUBBER	GASKET
1	COLD	PHOS. BRONZE	CONTACT PIN
1	NATURAL	DELFIN	INSULATOR
1	NICKEL	BRASS	HOUSING/BODY

USE THE FOLLOWING CRIMPING PARAMETERS FOR THE CRIMPING OF THE FERRULES AND THE CONTACT ASSEMBLY ONLY.
 WIRE STRIPPER: PERFORM THE FOLLOWING STRIPPER SETTINGS FOR THE WIRE STRIPPER PER INCHES:
 .020 - .315 = ± 0.003"
 .315 - 1.180 = ± 0.015"
 1.180 - 4.724 = ± 0.020"
 DO NOT SCALE DRAWINGS

APPROVALS	DATE
G.R.S.	06/29/04

Amphenol Connex

PART DESCRIPTION
TNC BULKHEAD CRIMP JACK
 (FOR RG-178B/U, 196A/U - 6.5mm PANEL)

PART NO. **122403**

DWG. NO. 122403.DWG

REV. A SIZE A SCALE NA