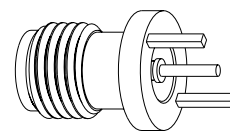


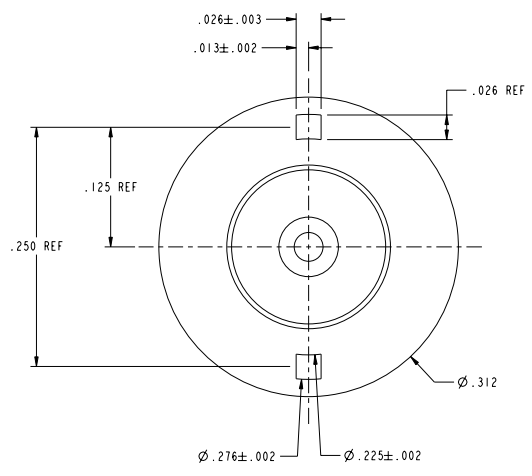
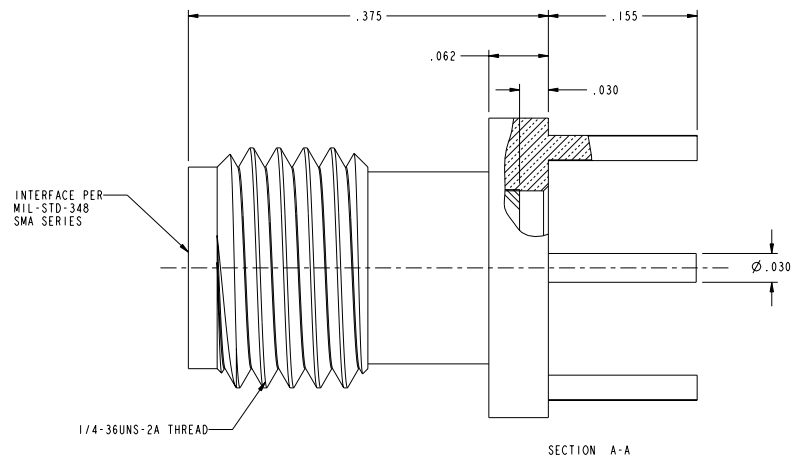
NOTES:

1. MATERIALS AND FINISHES:  
 BODY - BRASS, GOLD PLATING (.000010 THICK MIN) OVER NICKEL  
 CONTACT - BeCu, GOLD PLATING (.000030 THICK MIN) OVER NICKEL  
 INSULATOR - PTFE
2. ELECTRICAL:  
 A. IMPEDANCE: 50 OHM  
 B. FREQUENCY RANGE: DC - 2.5 GHz  
 C. VSWR(RETURN LOSS): 1.062 (-30 dB), MAX.  
 (SINGLE CONNECTOR TERMINATED, NO PCB LAUNCH INCLUDED)
3. MECHANICAL:  
 A. DURABILITY: 500 CYCLES MIN.  
 B. TEMPERATURE RANGE: -65° C TO +165° C
4. PACKAGING:  
 A. QUANTITY: SINGLE PACK  
 B. MARKING: BAG TO BE MARKED  
 "AMPHENOL, 901-10040-1, AND DATE CODE"

901-10040-1		REVISIONS			
DRAWING NO.	REV	DESCRIPTION	DATE	ECO	APPR
THIRD ANGLE PROJ.	A	RELEASE TO MFG	9/25/02	44204	CPM



SCALE 4.000



**CUSTOMER OUTLINE DRAWING**  
 ALL OTHER SHEETS ARE FOR INTERNAL USE ONLY

UNLESS OTHERWISE SPECIFIED, DIMENSIONS ARE IN INCHES AND TOLERANCES ARE: 2 PLACE DECIMAL ±.015 (0.381 mm)    3 PLACE DECIMAL ±.005 (0.127 mm) ANGLES ± 1°	MATERIAL  REFERENCE EARR 102-967729 I, NONE 615X-1705-100 GEN# ASSYF1_SMA SIM TO 901-10040	DRAWN C. McGRATH	DATE 9/12/02	TITLE SMA JACK PC MOUNT RECEPTACLE	Amphenol Amphenol Corporation Communication and Network Products Division Danbury, CT U.S.A. 06810		
		ENGINEER OWEN BARTHELMES	DATE 9/12/02			APPROVED OWEN BARTHELMES	DATE 9/25/02
NOTICE - These drawings, specifications, or other data (1) are, and remain the property of Amphenol Corp. (2) must be returned upon request; and (3) are confidential and not to be disclosed to any person other than those to whom they are given by Amphenol Corp. The furnishing of these drawings, specifications, or other data by Amphenol Corp., or to any other person for any purpose is not to be regarded by implication or otherwise in any manner licensing, granting rights or permitting such holder or any other person to manufacture, use or sell any product, process or design, patented or otherwise, that may in any way be related to or disclosed by said drawings, specifications, or other data.		CAD FILE I:\SMA\901-10040-1	CODE ID 74868	DWG SIZE B	DRAWING NO. 901-10040-1	SCALE: 10.0:1    SHEET 2 OF 2	REV A