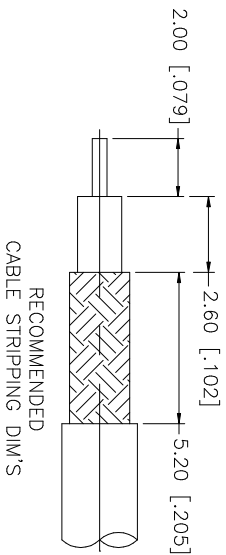
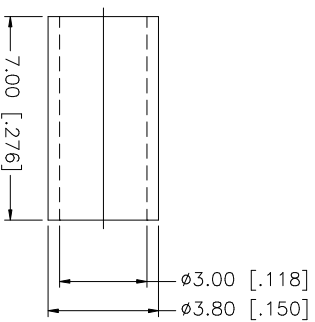
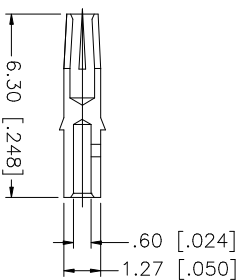
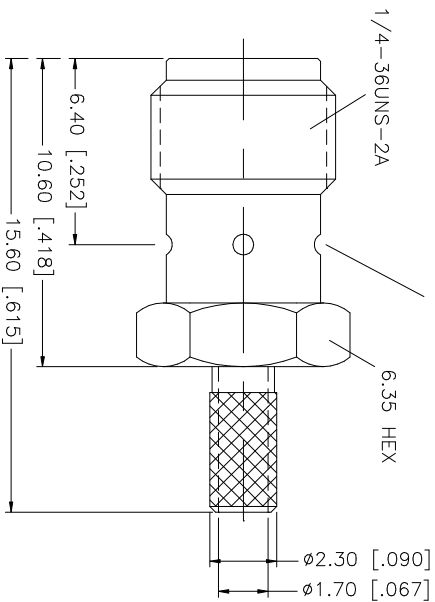


REV.	DATE	DESCRIPTION
A	04/31/03	UPDATE DRAWING FORMAT



STAKE IN 4 PLS.
EQUALLY SPACED 90° APART.



- NOTE:
1. CRIMPED FERRULE
HEX CRIMP SIZE .128"
 2. CONTACT PIN TO SOLDER.

Amphenol Connex

PART DESCRIPTION
SMA BULKHEAD CRIMP JACK
(FOR RG-174/U, 188A/U, 316/U)

PART NO. 132229

UNLESS OTHERWISE SPECIFIED DIMENSIONS ARE IN MILLIMETERS. DIMENSIONS IN [] ARE IN INCHES AND FOR CUSTOMER REFERENCE ONLY.	UNLESS OTHERWISE SPECIFIED TOLERANCES FOR MILLIMETERS ARE:	UNLESS OTHERWISE SPECIFIED TOLERANCES FOR INCHES ARE:	DO NOT SCALE DRAWING	APPROVALS	DATE	DWG. NO.	REV.	SIZE	SCALE
0.5 - 8mm ± 0.20mm	0.5 - 8mm ± 0.20mm	.020 - .315 = ± 0.007"		DRAWN G.R.S.	04/31/03	132229.DWG	A	A	NA
8 - 30mm ± 0.40mm	8 - 30mm ± 0.40mm	.315 - 1.180 = ± 0.015"		CHECKED					
30 - 120mm ± 0.50mm	30 - 120mm ± 0.50mm	1.180 - 4.724 = ± 0.020"		ISSUED					
				SHEET 1 OF 1					
				CAD FILE C:/132/132229.DWG					
8									
7									
6									
5									
4	FERRULE	COPPER	1						
3	CONTACT PIN	BER. COPPER	1						
2	INSULATOR	TEFLON	1						
1	BODY	BRASS	1						
	DESCRIPTION	MATERIAL	QTY						