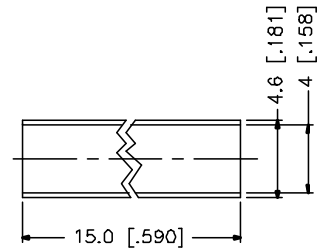
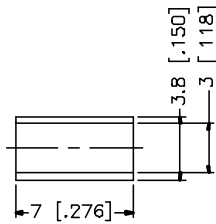
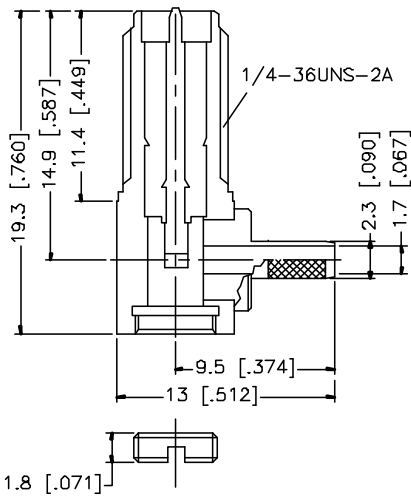
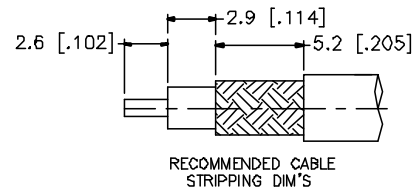
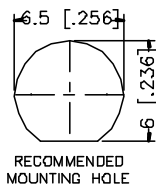
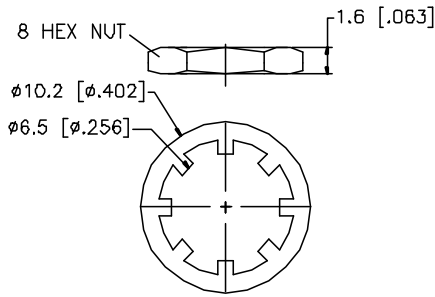



REV.	DATE	DESCRIPTION
NC	03/19/01	INITIAL RELEASE



DESCRIPTION	MATERIAL	FINISH	UNLESS OTHERWISE SPECIFIED DIMENSIONS ARE IN MILLIMETERS	APPROVALS	DATE				
1 BODY	BRASS	GOLD	DIMENSIONS IN [ ] ARE IN INCHES FOR CUSTOMER REFERENCE ONLY	DRAWN G.R.S.	03/19/01				
2 INSULATOR	TEFLON	NATURAL	UNLESS OTHERWISE SPECIFIED TOLERANCES FOR MILLIMETERS ARE: 0.5-6 = ± 0.2 6-30 = ± 0.4 30-120 = ± 0.6 120-315 = ± 1 315-1000 = ± 1.6 1000-2000 = ± 2.4	CHECKED		SIZE	FSCM NO	DWG. NO	REV
3 CONTACT PIN	BER. COPPER	GOLD		A	99001	132245RP.DWG	NC		
4 FERRULE	COPPER	GOLD		SCALE	NA	PART NO.	132245RP	SHEET	1 OF 1
5 HEAT SHRINK TUBE				DO NOT SCALE DRAWING					
6									
7									
8									